


Thank you for purchasing this light fitting. Please read the instructions carefully before use to ensure safe and satisfactory operation of this product. Please keep these instructions for future reference.

Warnings!

 This fitting is a Class II, double insulated product. It does not require an Earth, and Live or Neutral must not be connected to Earth.

This product is only suitable for connection to a 240V~50Hz supply in accordance with current IEE wiring regulations. It should be installed in accordance with local building regulations and is for indoor use only. It is not suitable for a bathroom location.

Before installing your light fitting always switch off the mains supply and remove the appropriate fuse or switch off the appropriate circuit breaker before commencing installation.

Never fit bulbs of a higher wattage than those specified on the label, as these may cause overheating and damage the fitting. This product is suitable for use with a dimmer switch, when used with dimmable bulbs.

If you are in any doubt about your competence please consult a qualified electrician.

If any modification is made it will invalidate the warranty and may render the product unsafe.

This product contains delicate parts – be careful during handling and maintenance to avoid breakage.

Keep children and animals away from the assembly area.

Keep all plastic wrapping materials away from children to avoid danger of suffocation.

Ensure that all packaging is disposed of carefully and responsibly.

Fixing Instructions

Make sure you have the following items which are required to install this light fitting:

Small electrical screwdriver, cross head screwdriver & insulation tape.

Step 1

Carefully unpack the carton and make sure you have all the parts ready for assembly (see parts list overleaf). Decide on the position of the light fitting or remove existing light fitting. Note the position of the electrical connections, and ensure there is a solid mounting surface, preferably a wooden joist or joist bridge, to support the weight of the light fitting.

Please note: This product is very delicate and will be easier to assemble with the help of an assistant.

Step 2

Attach the stem by screwing the stem in a clockwise direction, into the threaded part of the body **(1)**. Pull any excess cable through from the top of the ceiling cup. It maybe necessary to turn the stem anticlockwise before fixing into place to avoid twisting the internal cable. Tighten to secure. Take care not to rotate more than 360° when installing and in use.

Step 3

To reduce packaging, the arms of the fitting have been deliberately moved out of position. Before installation, the arms must be correctly repositioned into equal eighths by hand **(2)**. Each arm has a spring washer fitted to it, to enable the arms to be repositioned without the need for loosening or retightening the nut. **Caution!** Arms are made from glass. Please take care when handling to avoid damage or injury. When unfolding the arms, hold them at the end nearest the body - not the lampholder to avoid breakage.

Step 4

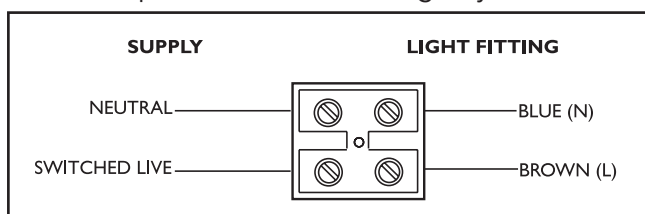
Remove the mounting bracket **(3)** from the product by undoing the 4 side screws **(4)** and retain for reuse. Use the mounting bracket as a template to mark the screw holes. Drill holes and fit supplied wall plugs **(5)** (suitable for masonry only - for other surfaces use appropriate fixings). Take care not to damage any wiring or pipes when drilling the holes. Fix the mounting bracket to the ceiling using the supplied screws **(6)**.

Step 5

The hanging height of this product can be adjusted. Unscrew the carabiner **(7)** on the bottom chain link and refit to achieve the desired drop. Re-tighten to secure and then remove excess chain links with 2 pairs of pliers. Feed the cable through the cord grip **(8)** until the desired height is achieved. It maybe necessary to cut, shorten and reconnect the cable. If you are unsure how to do this, contact a qualified electrician. **Please note:** If there is a screw clamp inside the ceiling cup, do not loosen the screws as this is securing the cable into the terminal block.

Step 6

Having identified the household wiring from your existing light fitting, connect to the connection block **(9)** inside the product in the following way:



Check that...

You have correctly identified the house wires.

The connections are tight.

No loose strands have been left out of the connection block.

The lid is closed securely over the terminal block.

Step 7

Refit the product to the mounting bracket using the screws removed in step 4 and tighten the screws to secure. Take care not to trap any wiring.

Step 8

Fit part (10) on the stem on the base of the product, followed by 1 silicone washer (F). Next fit part (11), 2nd silicone washer (F), metal washer (G) and secure in place with the hex nut (H). Fit the metal cap (I), finial (12) and add the decorative droplet (C).

Step 9

Place parts (13) and (14) onto each lampholder.

Step 10

Fit the bulbs (15). 8 x Max 6W LED E14 Candle. **NOTE: Never fit bulbs of a higher wattage than those specified on the label (as these may cause overheating and damage the fitting).**

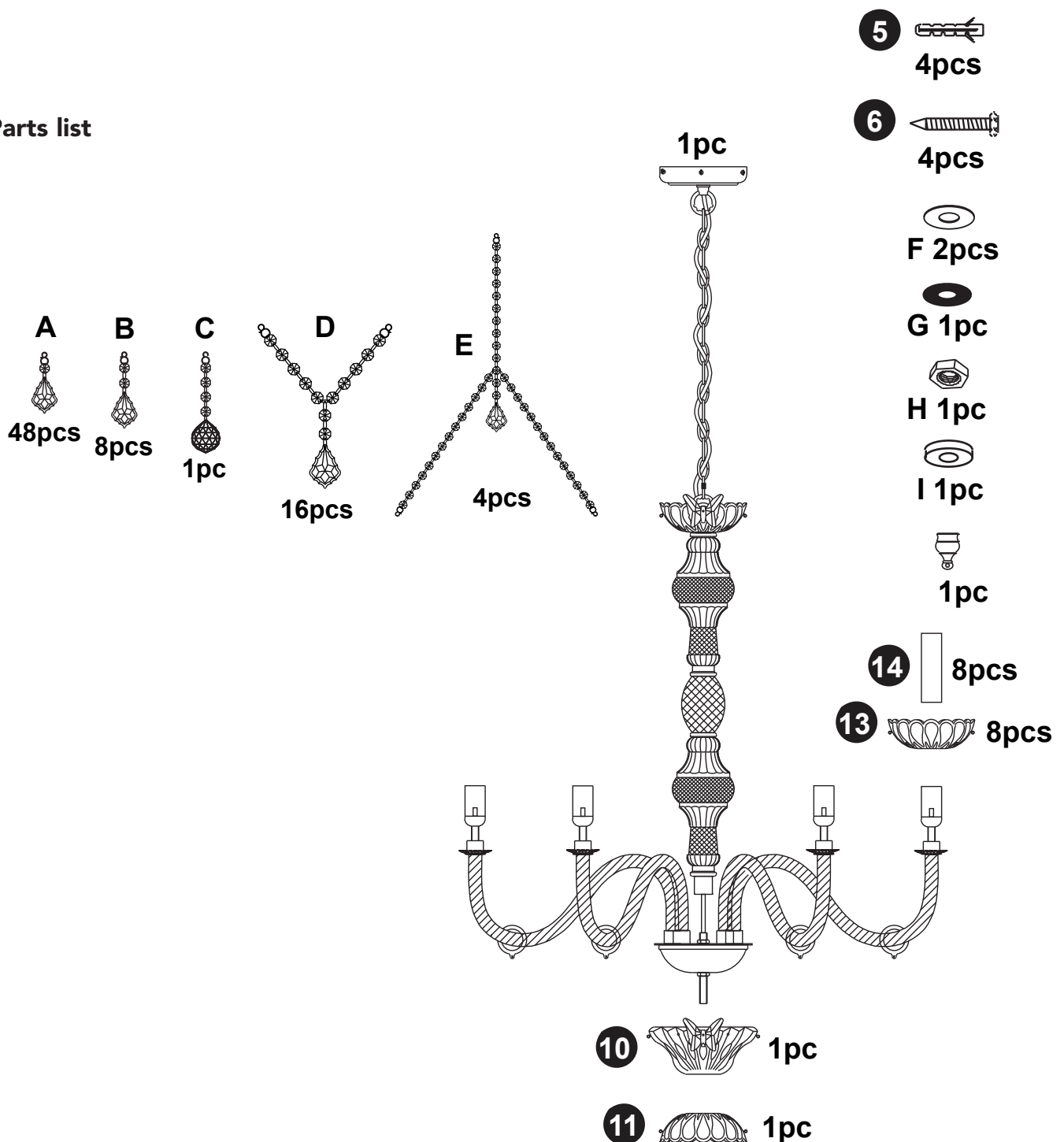
Step 11 - Attaching the decorative droplets

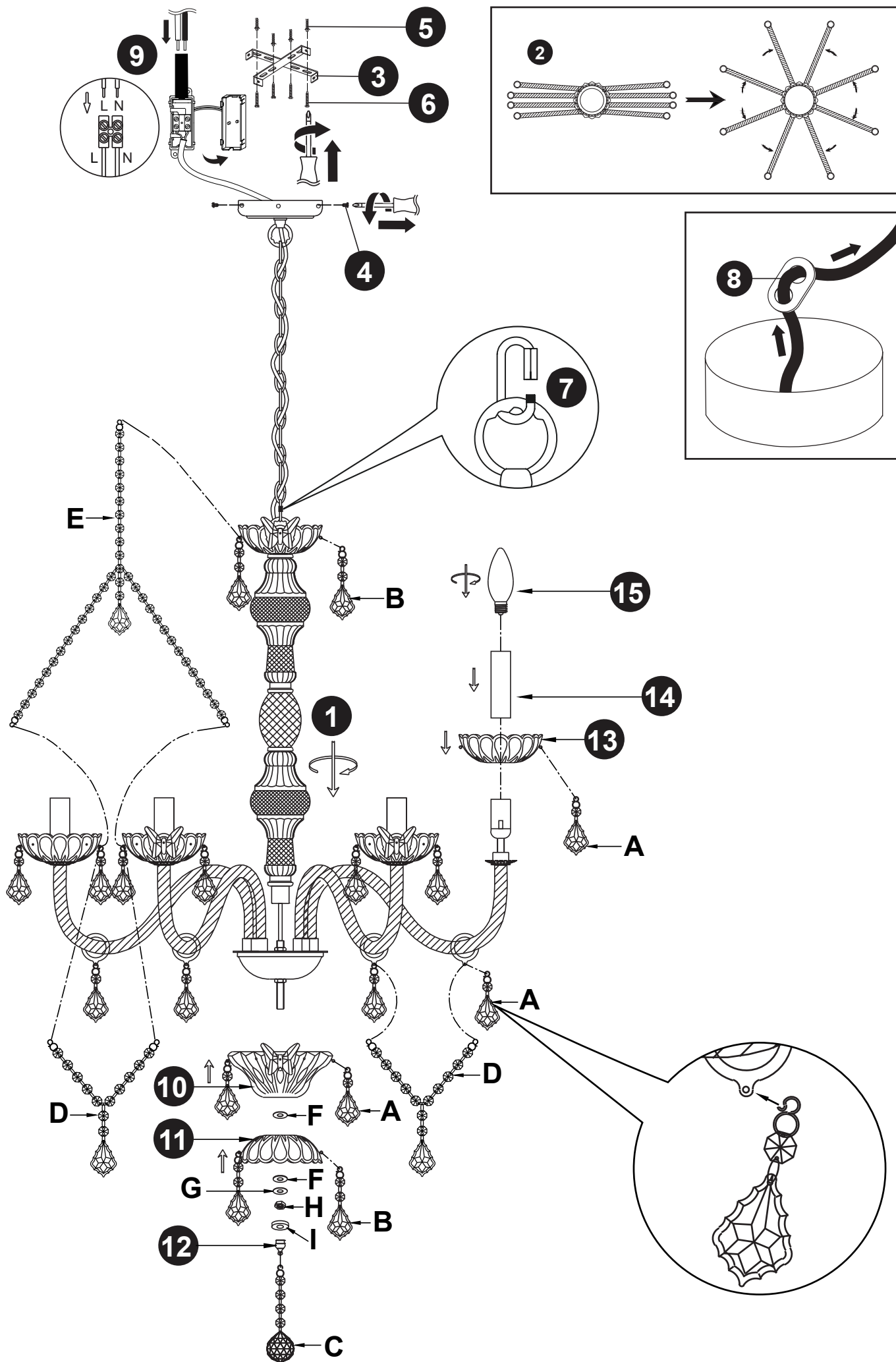
Fit the remaining decorative droplets onto the product as shown overleaf. To attach, hook each droplet chain onto the loops on the product. It may be easier to complete the droplets on just 2 arms at a time.

Step 12

Replace fuse or circuit breaker and switch on to test. Your light is now ready for use.

Parts list







Spare parts

If any parts become lost or damaged, please contact Dunelm for replacements.

Care and cleaning

Finish - We recommend cleaning with a soft dry cloth. Do not use abrasive materials as these will damage the finish.

Acrylic parts - Just use a damp cloth. Do not use abrasive materials as these will damage the finish. Take care when handling to avoid damage or injury.

Our packaging is recyclable, please recycle where facilities exist.



Waste electrical products should not be disposed of with household waste.

Please recycle where facilities exist. Check with your Local Authority or retailer for recycling advice.

— We're happy to recycle your old light for free. Simply bring it to store within 28 days of purchase of your new light, with your receipt, and we'll make sure your old light stays out of landfill.

dunelm.com

Manufactured in China for
Dunelm (Soft Furnishings) Ltd. LE7 1AD
& Dunelm (Soft Furnishings)
Londonderry Ltd. BT48 8QN

