

Thank you for purchasing this light fitting. Please read the instructions carefully before use to ensure safe and satisfactory operation of this product. Please keep these instructions for future reference.

Warnings!

This is a Class I product. This fitting must be connected to Earth. The terminal blocks are supplied according to requirements of the fitting. Please read these instructions carefully before commencing any work. It is recommended that this fitting is installed by a qualified electrician. Install in accordance with the IEE Wiring regulations and the Building Regulations. This product is suitable for indoor use only.

To prevent electrocution switch off at mains supply before installing or maintaining this fitting. Ensure other persons cannot restore the electrical supply without your knowledge. If you are in any doubt, please consult a qualified electrician. This light fitting should be connected to a 5 amp fused circuit.

If replacing an existing fitting, make a note of the connections.

Always use the correct type and wattage bulb. Never exceed the wattage stated.

This product is suitable for use with a dimmer switch. Check compatibility of bulbs with dimmers.

When changing a bulb, always switch off at the mains and allow the old bulb to cool down before handling.

This product has special protection against the ingress of water, and is rated IP44.

If any modification is made it will invalidate the warranty and may render the product unsafe.

This product contains delicate parts – be careful during handling and maintenance to avoid breakage.

Keep children and animals away from the assembly area.

This fitting contains small parts that could cause choking if swallowed.

Keep all plastic wrapping materials away from children to avoid danger of suffocation.

Ensure that all packaging is disposed of carefully and responsibly.

Fixing Instructions

Make sure you have the following items which are required to install this light fitting:

Small electrical screwdriver, cross head screwdriver & insulation tape.

Step 1

Decide on the position of the light fitting or remove existing light fitting. Note the position of the electrical connections, and ensure there is a solid mounting surface, preferably a wooden joist or joist bridge to support the weight of the light fitting.

Installation

This product has special protection against the ingress of moisture and is IP44 rated.

This product is suitable for use in Zone 2 and outside Zones of a bathroom. If fitting in a bathroom a 30mA RCD must be fitted in accordance with IEE wiring regulations.

Step 2

Separate the glass shade (1) from the ceiling cover (2) by twisting anticlockwise.

Step 3

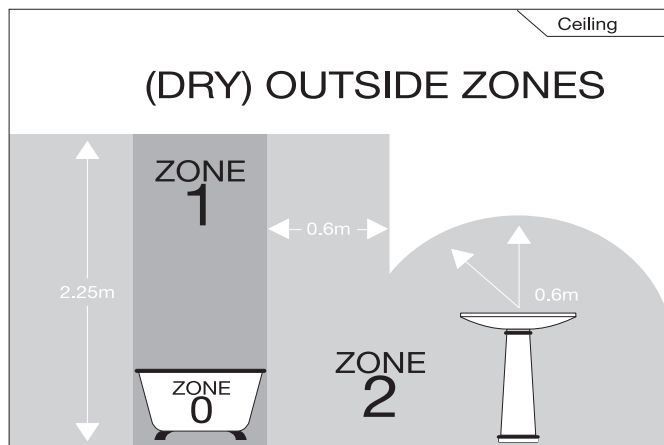
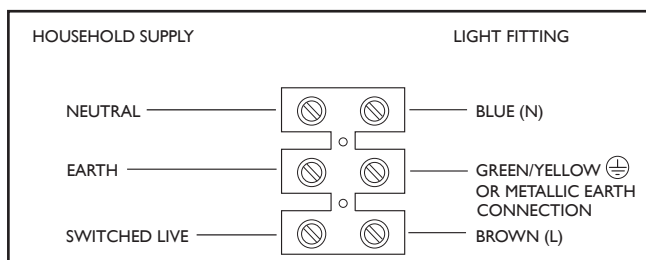
Use the ceiling cover as a template to mark the screw holes. Taking care to avoid damaging concealed wires and pipes, drill holes and fit supplied wall plugs (3) (suitable for masonry only - for other surfaces use appropriate fixings).

Step 4

Pierce a hole in the rubber grommet fitted in the ceiling cover and pull the household wiring through (4). Secure the fitting to the ceiling by using the supplied screws and rubber washers (5). Take care not to trap any wiring.

Step 5

Having identified the household wiring from your existing light fitting, connect to the connection block (6) inside the product in the following way:



Check that...

You have correctly identified the house wires.

The connections are tight.

No loose strands have been left out of the connection block.

Step 6

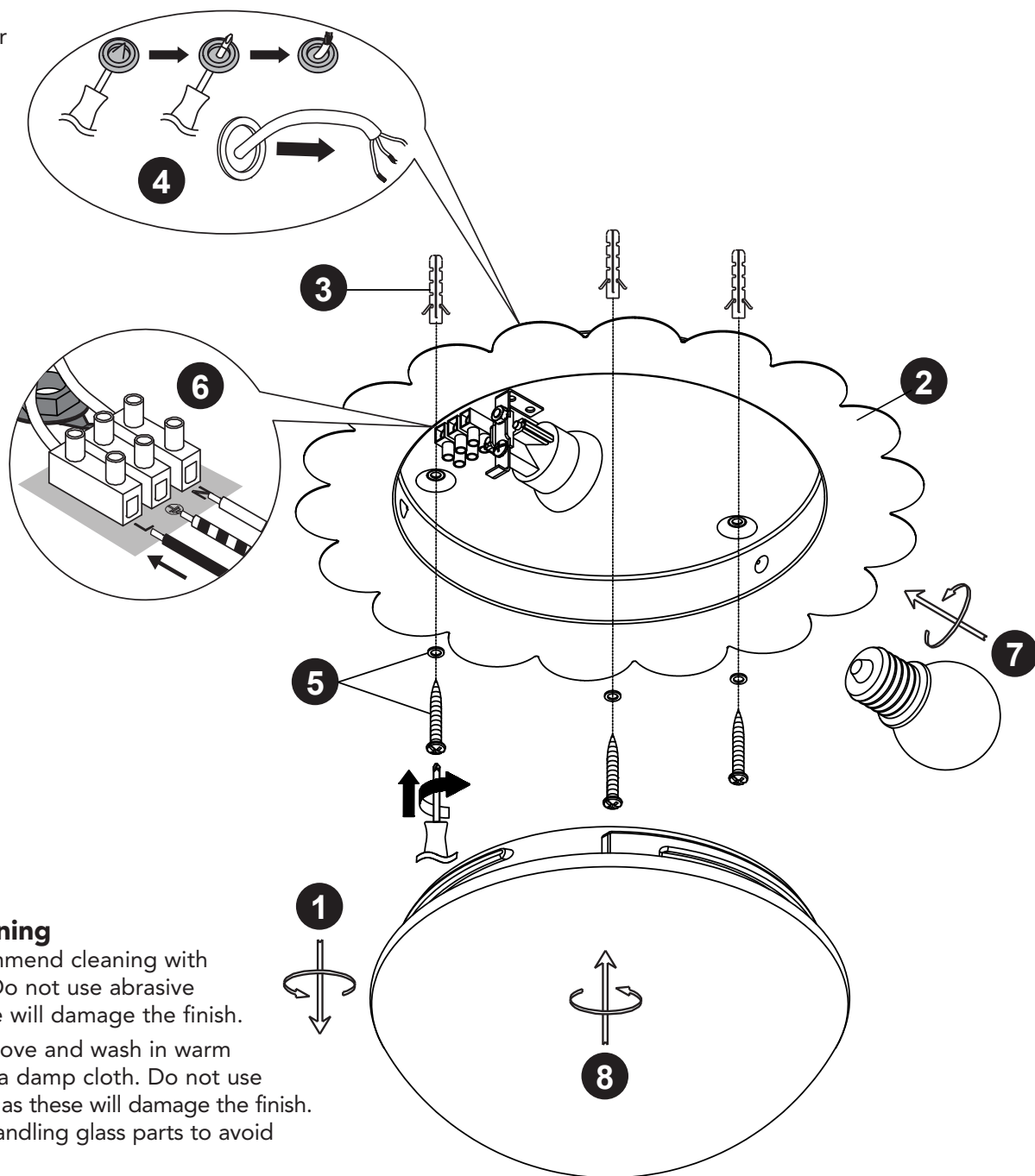
Fit the bulb (7). Max. 15W LED E27 GLS. NOTE: **Never fit bulbs of a higher wattage than those specified on the label (as this may cause overheating and damage the fitting).**

Step 7

Refit the glass shade (8) by aligning the gaps in the thread with the raised points on the inside of the ceiling cover and twisting clockwise. Ensure the rubber seal around the glass shade is in place.

Step 8

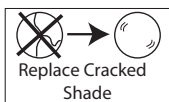
Turn on the power and test.



Care and cleaning


Finish - We recommend cleaning with a soft dry cloth. Do not use abrasive materials as these will damage the finish.

Glass parts - Remove and wash in warm water or just use a damp cloth. Do not use abrasive materials as these will damage the finish. Take care when handling glass parts to avoid damage or injury.



Do not use this product if the shade is cracked or damaged.
Do not use the product without the shade attached.

Our packaging is recyclable, please recycle where facilities exist.

 Waste electrical products should not be disposed of with household waste. Please recycle where facilities exist. Check with your Local Authority or retailer for recycling advice.

— We're happy to recycle your old light for free. Simply bring it to store within 28 days of purchase of your new light, with your receipt, and we'll make sure your old light stays out of landfill.

dunelm.com

Manufactured in China for
Dunelm (Soft Furnishings) Ltd. LE7 1AD
& Dunelm (Soft Furnishings)
Londonderry Ltd. BT48 8QN

