

Thank you for purchasing this light fitting. Please read the instructions carefully before use to ensure safe and satisfactory operation of this product. Please keep these instructions for future reference.

Warnings!

This is a Class I product. This fitting must be connected to Earth. The terminal blocks are supplied according to requirements of the fitting. Please read these instructions carefully before commencing any work. It is recommended that this fitting is installed by a qualified electrician. Install in accordance with the IEE Wiring regulations and the Building Regulations. This product is suitable for indoor use only.

To prevent electrocution switch off at mains supply before installing or maintaining this fitting. Ensure other persons cannot restore the electrical supply without your knowledge. If you are in any doubt, please consult a qualified electrician. This light fitting should be connected to a 5 amp fused circuit.

If replacing an existing fitting, make a note of the connections.

Always use the correct type and wattage bulb. Never exceed the wattage stated.

This product is suitable for use with a dimmer switch. Check compatibility of bulbs with dimmers.

When changing a bulb, always switch off at the mains and allow the old bulb to cool down before handling.

This product has special protection against the ingress of water, and is rated IP44.

If any modification is made it will invalidate the warranty and may render the product unsafe.

This product contains delicate parts – be careful during handling and maintenance to avoid breakage.

Keep children and animals away from the assembly area.

This fitting contains small parts that could cause choking if swallowed.

Keep all plastic wrapping materials away from children to avoid danger of suffocation.

Ensure that all packaging is disposed of carefully and responsibly.

Fixing Instructions

Make sure you have the following items which are required to install this light fitting:

Small electrical screwdriver, cross head screwdriver & insulation tape.

Step 1

Decide on the position of the light fitting or remove existing light fitting. Note the position of the electrical connections, and ensure there is a solid mounting surface to support the weight of the light fitting.

Installation

This product has special protection against the ingress of moisture and is IP44 rated.

This product is suitable for use in Zone 2 and outside Zones of a bathroom. If fitting in a bathroom a 30mA RCD must be fitted in accordance with IEE wiring regulations.

Step 2

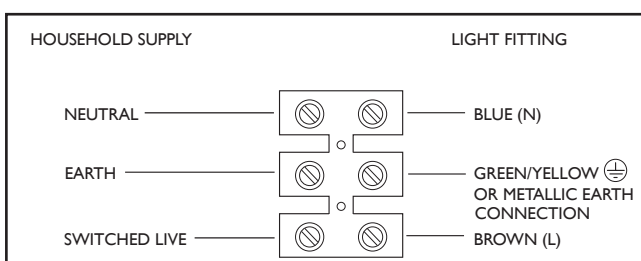
Remove the mounting bracket **(1)** from the wall cover by undoing the two side screws **(2)**. Keep the screws in a safe place for reuse.

Step 3

Using the mounting bracket as a template, mark the position of the mounting holes. Taking care to avoid damaging concealed wires and pipes, drill holes and fit supplied wall plugs **(3)** (suitable for masonry only - for other surfaces use appropriate fixings). Fix the mounting bracket to the wall using the supplied screws **(4)**.

Step 4

Having identified the household wiring from your existing light fitting, connect to the connection block **(5)** inside the product in the following way:

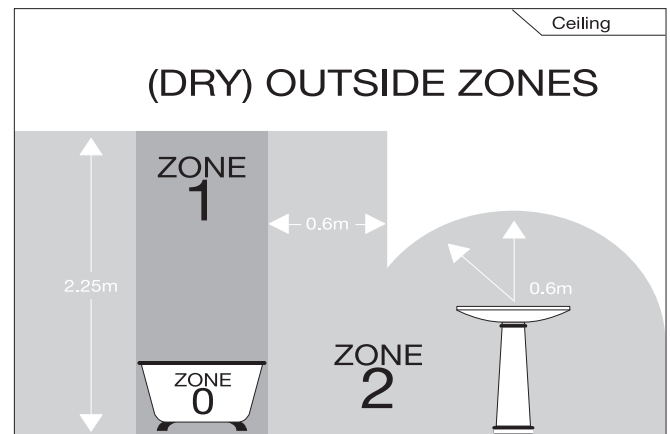


Check that...

You have correctly identified the house wires.

The connections are tight.

No loose strands have been left out of the connection block. Make sure the lid of the connection box is securely fixed to maintain moisture protection.



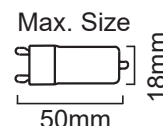
Step 5

Re-attach the product to the mounting bracket using the two screws (2) removed in step 2. Tighten the screws to secure but take care not to trap any wiring. Make sure the product is correctly orientated with the lampholder facing downwards.

Step 6

Fit the bulb (6). Max 5W LED G9. Please refer to the diagram for maximum bulb size to fit in the product.

NOTE: Never fit bulbs of a higher wattage than those specified on the label (as these may cause overheating and damage the fitting).

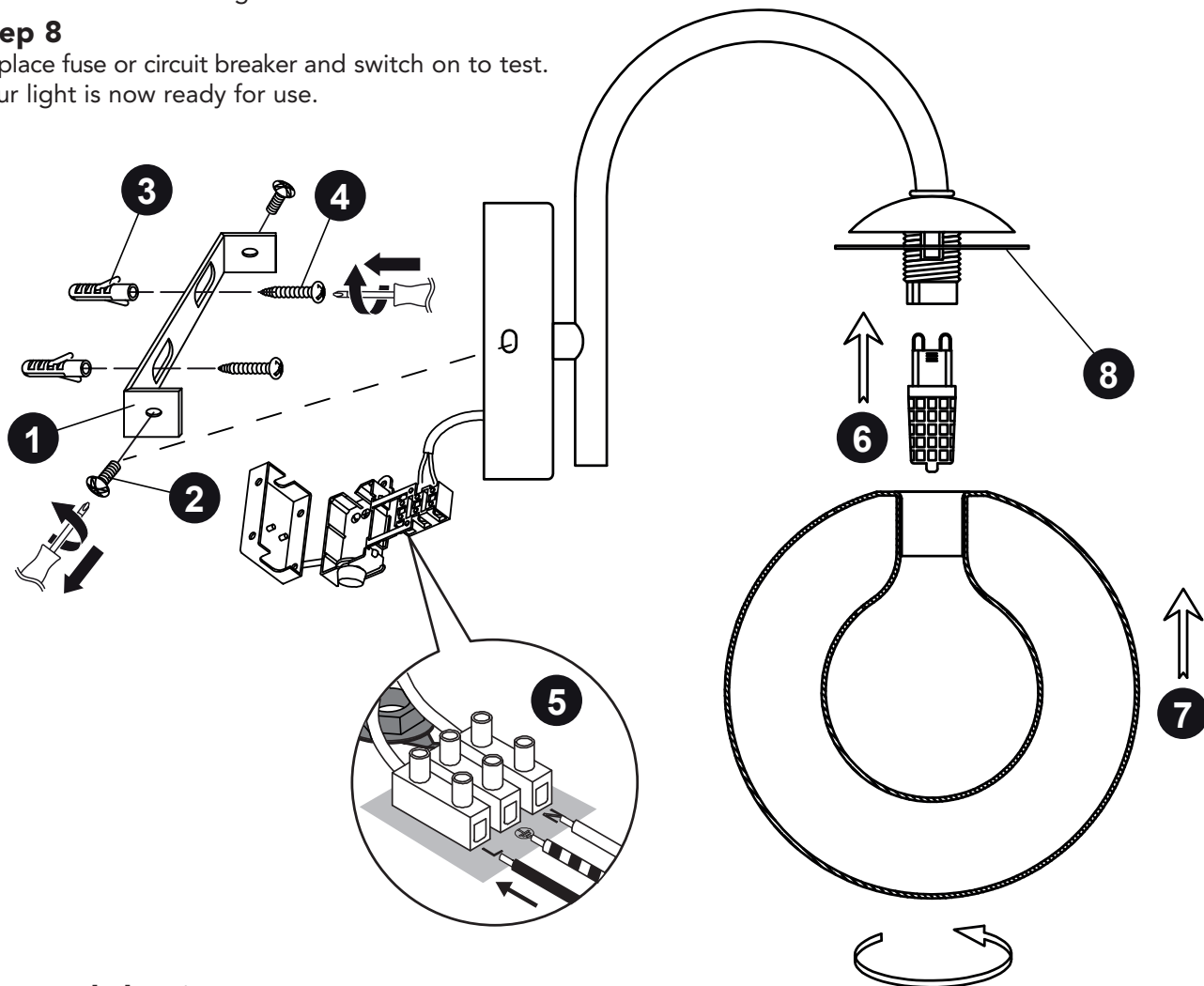


Step 7

Fit the glass shade (7) by carefully screwing in a clockwise direction on to the lampholder. Take care not to cross the threads. Make sure the washer (8) under the metal cup is securely in place. This is essential to ensure the product remains waterproof. **Please note:** The glass is very fragile. Take extra care to tighten with light pressure in order to avoid breakage.

Step 8

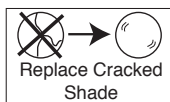
Replace fuse or circuit breaker and switch on to test.
Your light is now ready for use.



Care and cleaning

Finish - We recommend cleaning with a soft dry cloth. Do not use abrasive materials as these will damage the finish.

Glass parts - Remove and wash in warm water or just use a damp cloth. Do not use abrasive materials as these will damage the finish. Take care when handling glass parts to avoid damage or injury.



Do not use this product if the shade is cracked or damaged.
Do not use the product without the shade attached.

Our packaging is recyclable, please recycle where facilities exist.

Waste electrical products should not be disposed of with household waste. Please recycle where facilities exist.
Check with your Local Authority or retailer for recycling advice.

— We're happy to recycle your old light for free. Simply bring it to store within 28 days of purchase of your new light, with your receipt, and we'll make sure your old light stays out of landfill.

dunelm.com

Manufactured in China for
Dunelm (Soft Furnishings) Ltd. LE7 1AD
& Dunelm (Soft Furnishings)
Londonderry Ltd. BT48 8QN

