

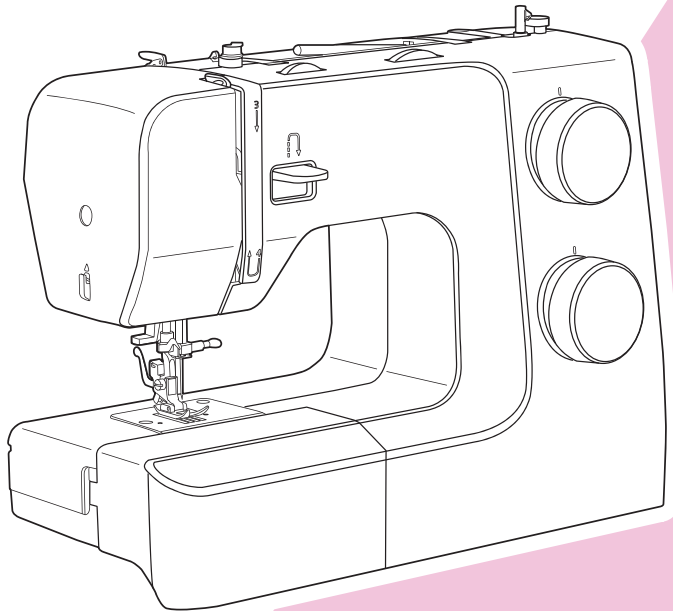
Quick Start Guide

Machine Introduction

- 1 Principal parts of the machine
- 2 Accessories

Machine Setup

- 3 Winding the bobbin
- 5 Threading the upper thread



Download the manual through the website:
<https://silverviscount.co.uk/wp-content/uploads/2024/04/Instruction-Manual-Silver-301302303.pdf>

Important safety instructions

When using an electrical appliance, basic safety should always be followed, including the following:

Read all instructions before using this sewing machine.

DANGER - To reduce the risk of electric shock:

1. An appliance should never be left unattended when plugged in.
2. Always unplug this appliance from the electric outlet immediately after using and before cleaning.

WARNING - To reduce the risk of burns, fire, electric shock, or injury to persons:

1. Read the instruction carefully before you use the machine.
2. Keep the instructions at a suitable place close to the machine and hand it over if you give the machine to a third party.
3. Use the machine only in dry locations.
4. Never leave the machine unattended with children or elderly people as they may not be able to estimate the risk.
5. This appliance can be used by children aged from 8 years and above and persons with reduced physical, sensory or mental capabilities or lack of experience and knowledge if they have been given supervision or instruction concerning use of the appliance in a safe way and understand the hazards involved.
6. Children shall not play with the appliance.
7. Cleaning and user maintenance shall not be made by children without supervision.
8. Always switch off the machine if you carry out preparation for work (change the needle, feed the yarn through the machine, change the footer, etc.).
9. Always unplug the machine if you leave it unattended, to avoid injury by expediently switch on the machine.
10. Always unplug the machine if you carry out maintenance (oiling, cleaning).
11. Don't use the machine if it's wet or in humid environment.
12. Never pull at the cord, always unplug the machine by gripping the plug.
13. If the LED lamp is damaged or broken, it must be replaced by the manufacturer or it's service agent or a similarly qualified person, in order to avoid a hazard.
14. Never place anything on the pedal.

15. Never use the machine if the air vents are blocked, keep the air vents of the machine and the foot pedal free from dust, fusel and leftovers.
16. The machine must only be used with designated foot controller, in order to avoid a hazard. If the foot controller is damaged or broken, it must be replaced by the manufacturer or its service agent or a similarly qualified person.
17. The power cord of the foot controller can not be replaced. If the power cord is damaged the foot controller must be disposed of.
18. The sound pressure level at normal operation is smaller than 75dB(A).
19. Do not dispose of electrical appliances as unsorted municipal waste, use separate collection facilities.
20. Contact your local government for information regarding the collection systems available.
21. If electrical appliances are disposed of in landfills or dumps, hazardous substances can leak into the groundwater and get into the food chain, damaging your health and well-being.
22. When replacing old appliances with new ones, the retailer is legally obligated to take back your old appliance for disposal at least for free of charge.
23. The appliance is not to be used by persons (including children) with reduced physical, sensory or mental capabilities, or lack of experience and knowledge, unless they have been given supervision or instruction. (For outside Europe)
24. Children being supervised not to play with the appliance. (For outside Europe)

SAVE THESE INSTRUCTIONS

This sewing machine is intended for household use only.

Be sure to use the sewing machine in the temperature range from 5°C to 40°C. If the temperature is excessively low, the machine can fail to operate normally.

To carry the sewing machine, hold the carrying handle with your hand, and support the sewing machine with the other hand.



Do not dispose of electrical appliances as unsorted municipal waste, use separate collection facilities.

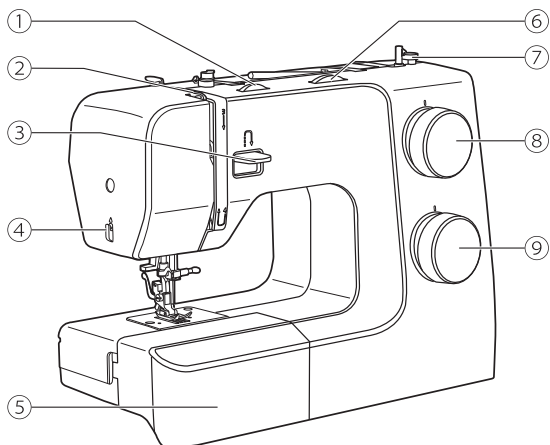
Contact your local government for information regarding the collection systems available.

If electrical appliances are disposed of in landfills or dumps, hazardous substances can leak into the groundwater and get into the food chain, damaging your health and well-being.

When replacing old appliances with new ones, the retailer is legally obligated to take back your old appliance for disposal at least for free of charge.

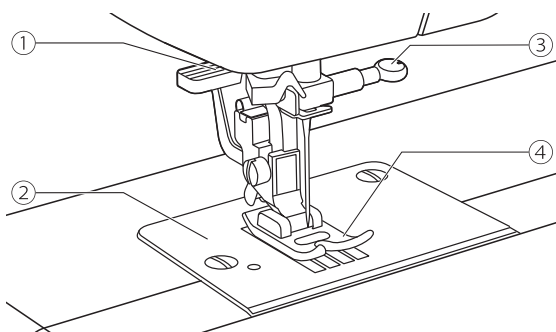
Machine Introduction

Principal parts of the machine



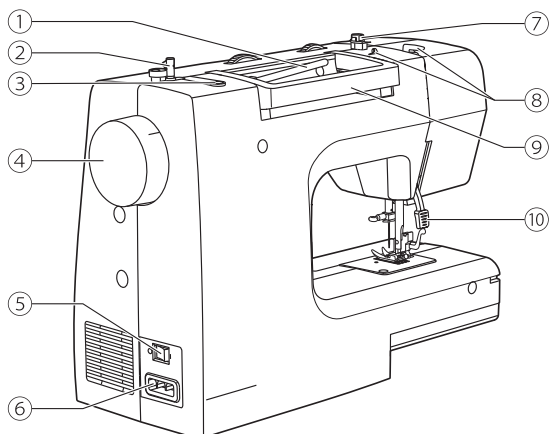
❖ Front overview

- ① Tension dial
- ② Take-up lever
- ③ Reverse sewing lever
- ④ Thread cutter
- ⑤ Sewing table and accessory box
- ⑥ Stitch width dial (depends on models)
- ⑦ Bobbin winder stopper
- ⑧ Stitch length dial
- ⑨ Pattern selector dial



❖ Needle area overview

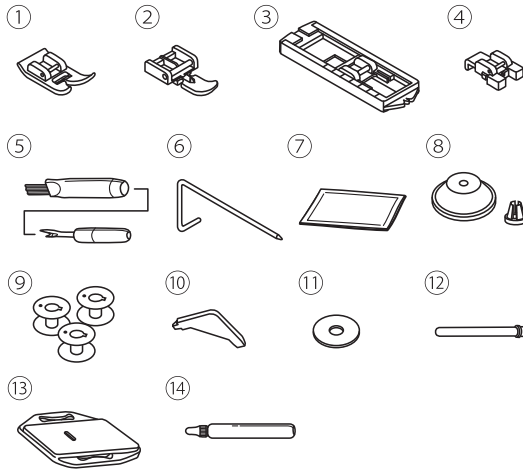
- ① Needle threader (depends on models)
- ② Needle plate
- ③ Needle clamp screw
- ④ Presser foot



❖ Back overview

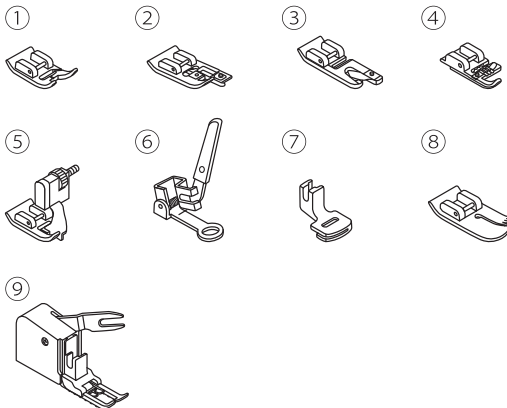
- ① Horizontal spool pin
- ② Bobbin winder spindle
- ③ Second spool pin hole
- ④ Handwheel
- ⑤ Power switch
- ⑥ Power cord socket
- ⑦ Bobbin thread guide
- ⑧ Upper thread guide
- ⑨ Handle
- ⑩ Presser foot lifter

Accessories



❖ Standard

- ① All purpose foot
- ② Zipper foot
- ③ Buttonhole foot
- ④ Button sewing foot
- ⑤ Seam ripper/brush
- ⑥ Edge/quilting guide
- ⑦ Pack of needles
- ⑧ Spool holder
- ⑨ Bobbin (3x)
- ⑩ L-screwdriver
- ⑪ Spool pin felt
- ⑫ Second spool pin
- ⑬ Extension table
- ⑭ Oil bottle



❖ Optional

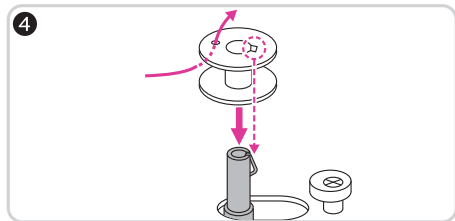
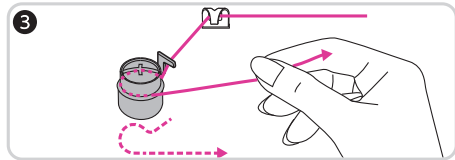
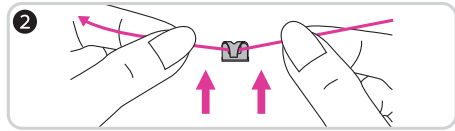
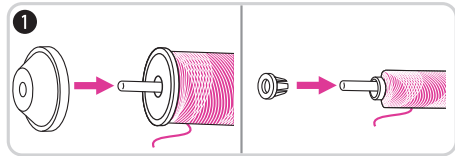
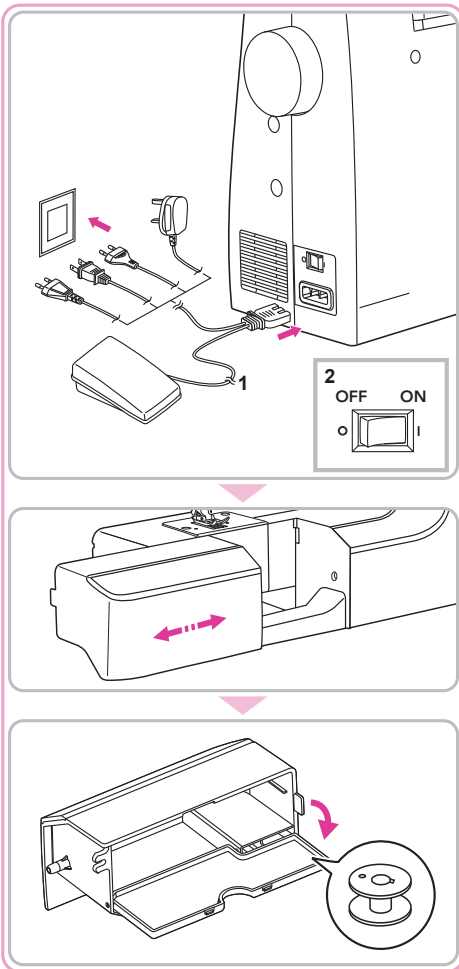
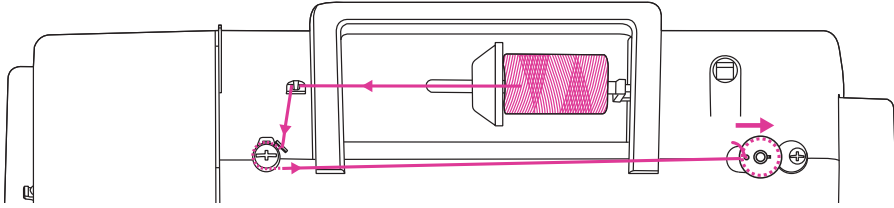
- ⑮ Satin stitch foot
- ⑯ Overcasting foot
- ⑰ Hemmer foot
- ⑱ Cording foot
- ⑲ Blind hem foot
- ⑳ Darning/embroidery foot
- ㉑ Gathering foot
- ㉒ Quilting foot
- ㉓ Walking foot

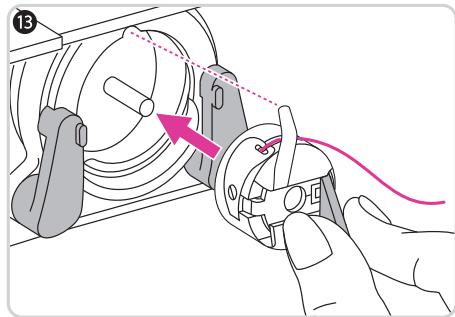
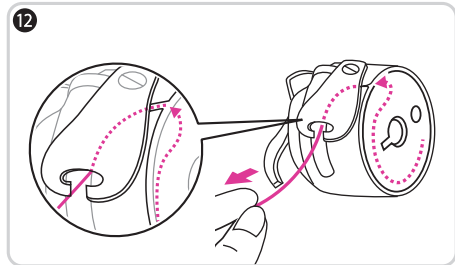
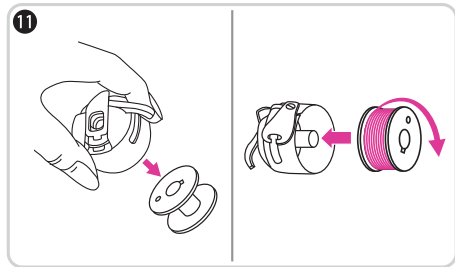
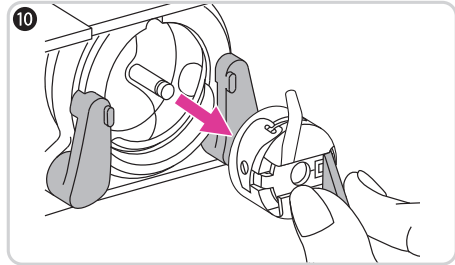
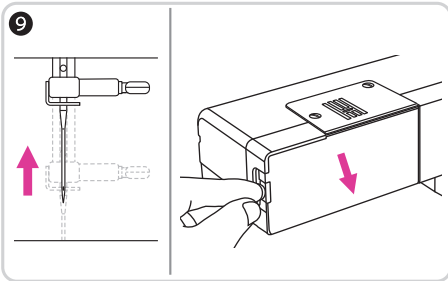
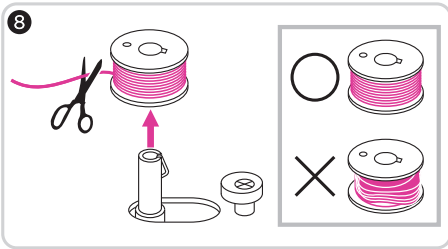
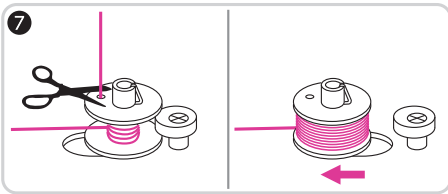
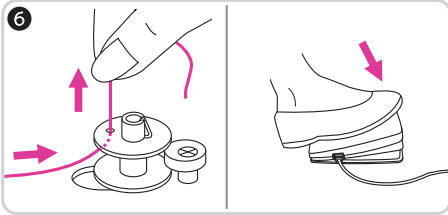
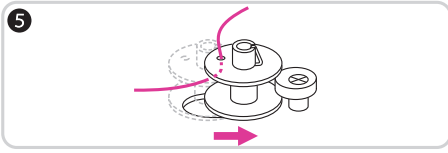
Note

To purchase optional accessories, please consult your local dealer for further information.

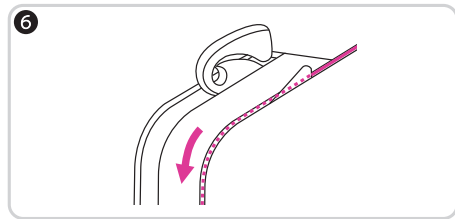
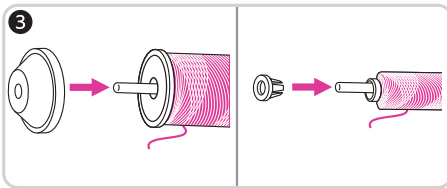
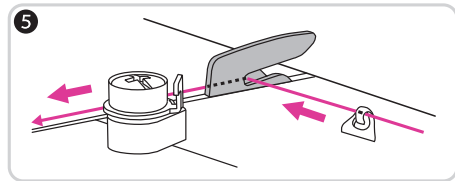
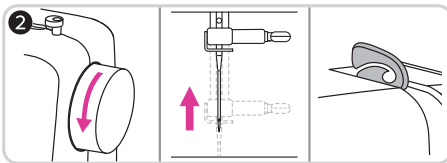
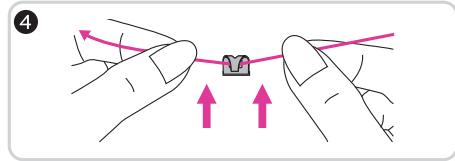
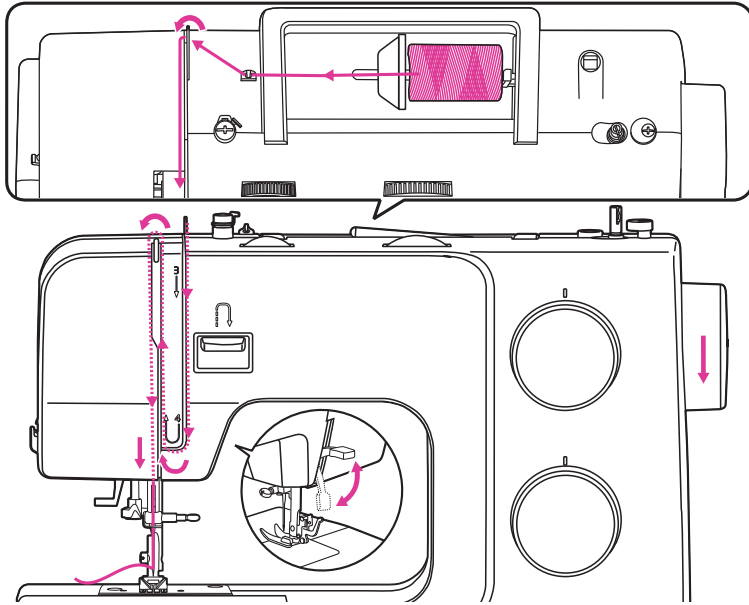
Machine Setup

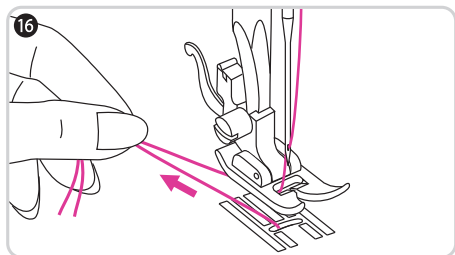
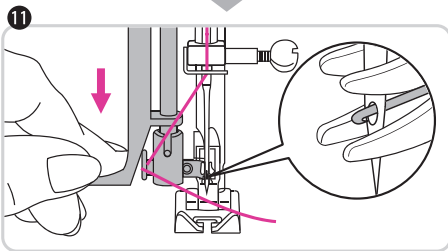
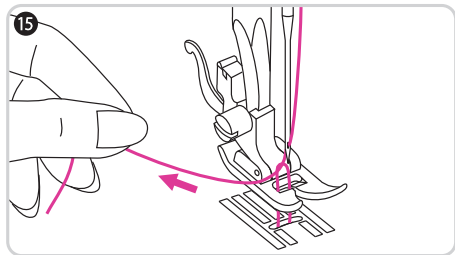
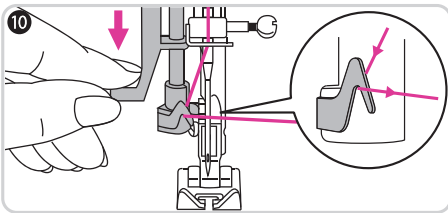
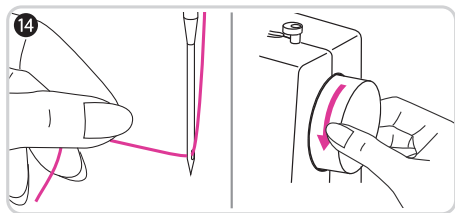
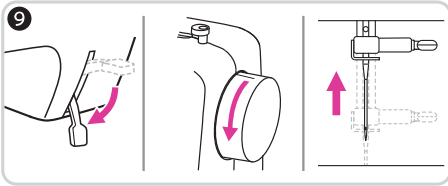
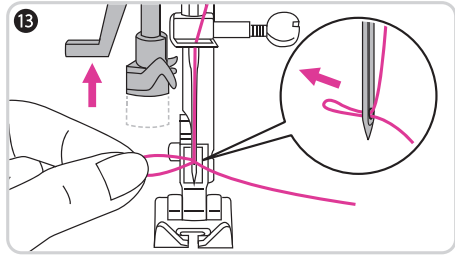
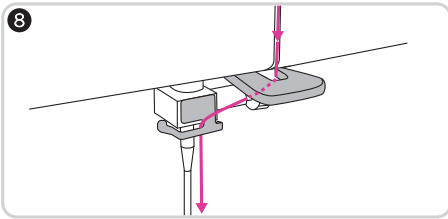
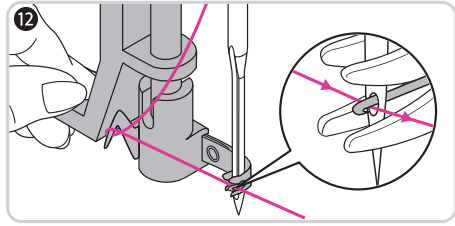
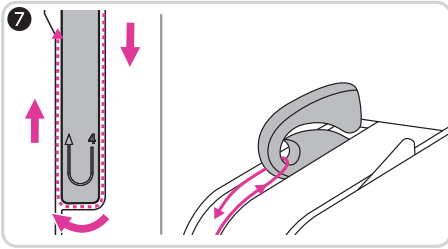
Winding the bobbin





Threading the upper thread









021XXXXXX