

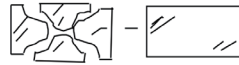
# Installation and Safety Instructions

## Outdoor Post Light Fitting

### Safety Warnings

- This product is only suitable for connection to 240V~50Hz supply, outdoor use.
- Before installing your light fitting always switch off the mains supply and remove the appropriate fuse or switch off the appropriate circuit breaker before commencing installation.
- This is a Class I fitting, and **must** be connected to Earth. The terminal blocks are supplied according to requirements of the fitting.
- Run supply wire from a 5-amp electrical supply using double insulated 3-core cable of type H05RN-F 1.0mm<sup>2</sup> (not supplied) to selected site, ensuring it is adequately protected through the full length of the cable run, it must come out of the flat surface of the mounting surface in line with the entry to the fitting.
- Except where installed in a conduit or duct, which provides equivalent protection against mechanical damage, a cable buried in the ground shall incorporate an earthed armour or metal sheath or both, suitable for use as a protective conductor, or be of insulated concentric construction. Buried cables shall be marked by cable covers or a suitable marking tape. Buried conduits and ducts shall be suitably identified. Buried cables, conduits and ducts shall be at a sufficient depth to avoid being damaged by any reasonably foreseeable disturbance of the ground.
- Never fit bulbs of a higher wattage than those specified on the label (as these may cause overheating and damage the fitting).
- This product contains delicate parts. Take care during installation and maintenance to avoid breakages
- If you are in any doubt about your competence please consult a qualified electrician.
- If any modification is made it will invalidate the warranty and may render the product unsafe.
- If any part of the bulb housing is broken or cracked then it must be replaced immediately to preserve the

water ingress protection, please consult your retailer.



### Care Information

Allow 10 minutes to cool before replacing, adjusting or cleaning.

Clean with a dry cloth only. Do not use liquid or abrasive cleaners on this product.

### Assembly/ User Instructions

#### Before you start

Please read these instructions carefully before fitting and retain for reference.

Check the packaging and make sure that you have all the required parts.

Follow each assembly step in order to prevent incorrect assembly.

Ensure that the product is fully assembled as illustrated before use.

#### The Light pack contains:

Light fitting.

Terminal connection block(s).

Fixing pack.

#### The following tools may be required:

Selection of cross and flat head screwdrivers.

Electric drill and assorted drill bits.

Wire strippers.

Electrical insulation tape.

**These assembly diagrams are intended as a guide – if in doubt consult a qualified electrician.**

## Assembly/ User Instructions Continued

1. Determine the position of your light fitting taking into account the entry position of the cable and make sure there is sufficient cable coming out of the floor to connect to the terminal block. Ensure that the mounting surface is solid, preferably a brick or block floor and ensure that there are no other cables or pipes beneath the surface.
2. Diagram **A**: Connect the house wiring to the internal terminal block by first removing the terminal bracket from the base and removing the cover. Connect the mains supply as shown below, then replace the cover, and replace the terminal bracket onto the base of the fitting. **NOTE: This is a Class I fitting and must be earthed.**
3. Diagram **B**. Use appropriate fittings to secure the post to the mounting surface (1&2)
4. Fit the bulb into the lamp holder (3). **NOTE: Never fit a bulb of a higher wattage than that specified on the label (as this may cause overheating and damage the fitting).**
5. Attach the lid of the fitting with the hex nuts (4), ensuring a good seal to maintain ingress protection.
6. Turn on the power and test.

Diagram A

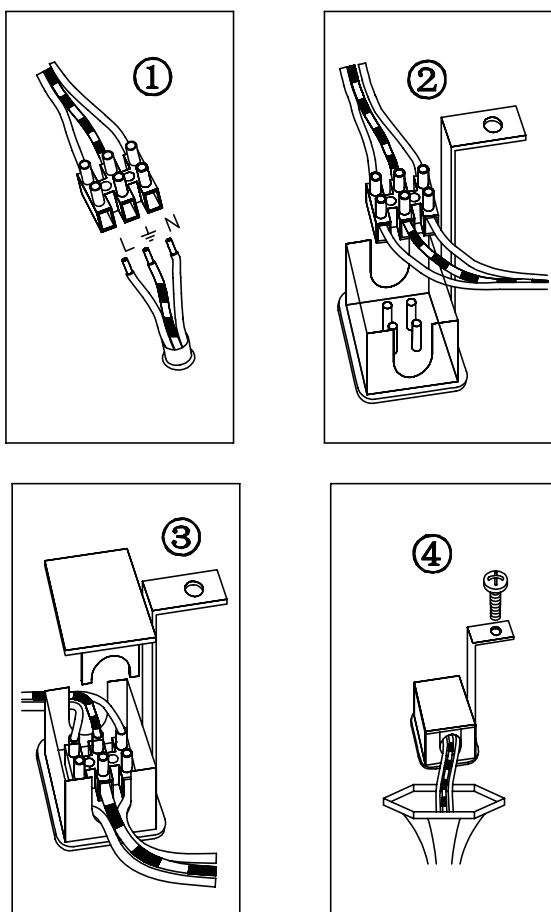
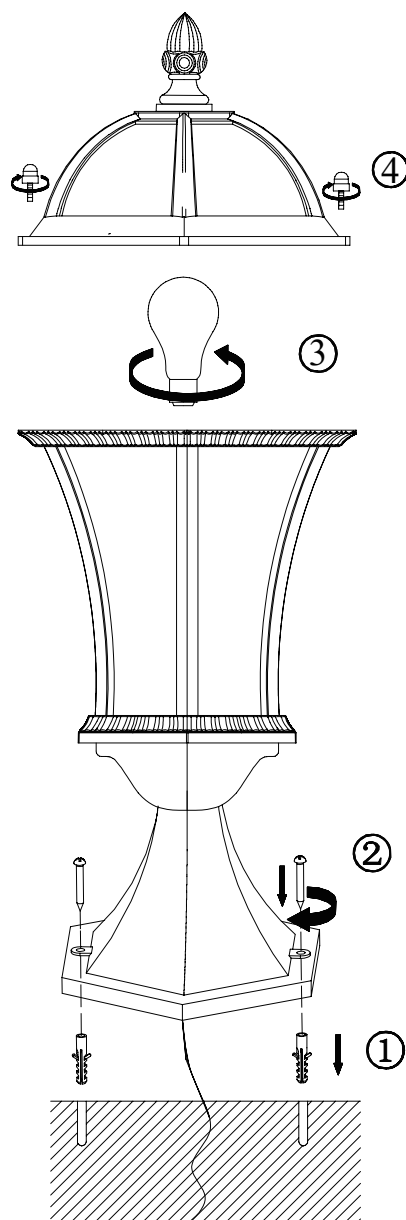


Diagram B



- EN Scan QR code for multi-language
- FR Scannez le code QR pour plusieurs langues
- ES Escanee el código QR para varios idiomas
- PL Zeskanuj kod QR dla wielu języków
- DE Scannen Sie den QR-Code nach mehreren Sprachen
- IT Scansiona il codice QR per multilingua