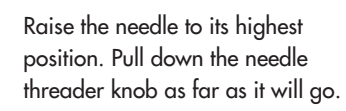
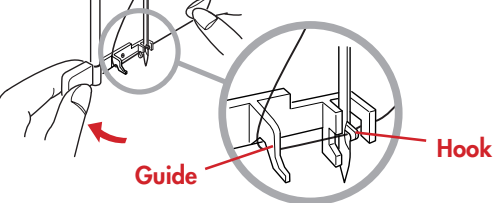
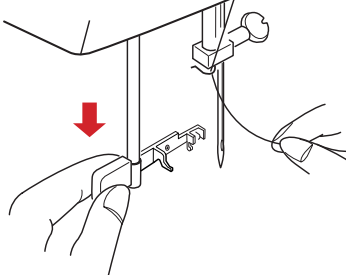
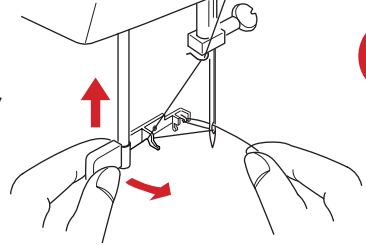


USING THE NEEDLE THREADER

- 

1 Raise the needle to its highest position. Pull down the needle threader knob as far as it will go.
- 

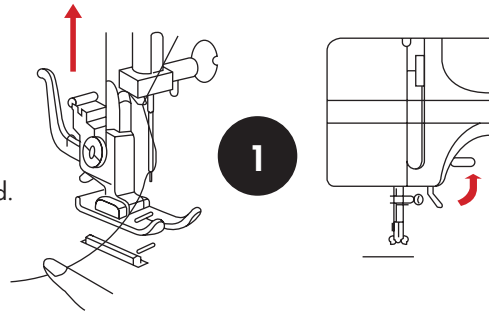
2 Turn the knob in the direction of the arrow in the illustration, then insert the Hook into the needle eye. Lead the thread around the Guide and under the Hook.
- 

3 Turn the knob in the direction of the arrow in the illustration, drawing the thread loop through the needle.
- 

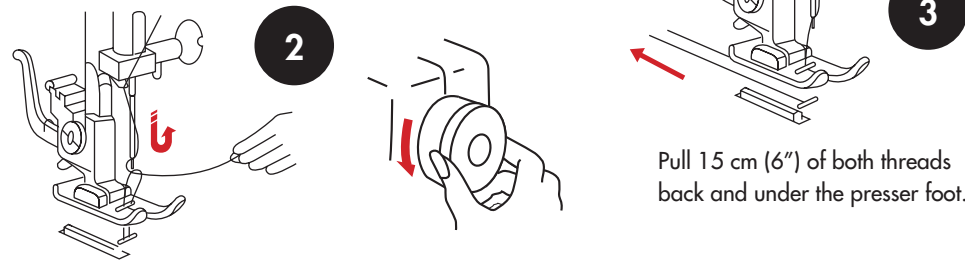
4 Pull the thread through the needle eye.

DRAWING UP THE BOBBIN THREAD

Raise the presser foot and hold the needle thread lightly with your left hand.



Turn the handwheel slowly toward you with your right hand until the needle goes down and continue turning the handwheel until the take-up lever is at its highest position. Lightly draw up the needle thread forming a loop of the bobbin thread.



ALWAYS TURN THE HANDWHEEL TOWARDS YOU
– Counter clockwise.

NO POWER
Check main power supply is turned on, foot control is connected.

MACHINE NOT FEEDING FABRIC
Check the Feed Dogs are raised and clean. These are the teeth under the presser foot that feed the fabric when stitching. When the drop feed lever is moved from the lowered position to the raised position the feed teeth do not come up at the needle plate until you turn the balance wheel towards you.

Check stitch length is set for the correct weight of fabric

SKIPPED / BAD STITCHING:
Rethread the machine with the presser foot raised and the take up lever in the highest position. Follow the threading guides and check the thread is in the take up lever.

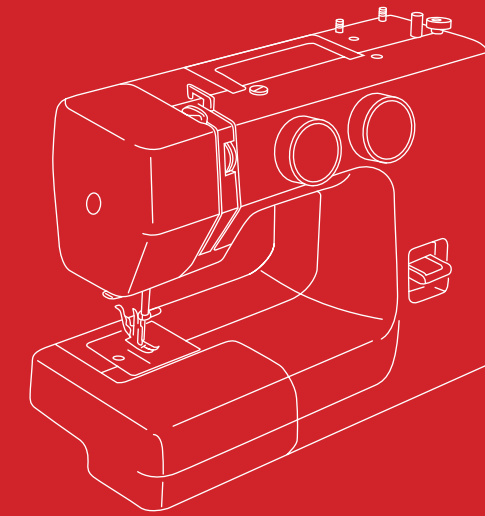
- Check – the needle is inserted correctly, (flat side to the back)
- Check – the needle is not bent or blunt and is the correct type of needle
- Check – the tension setting is correct (average setting for a straight stitch is approx. 4)
- Check – the tension disc area is clean
- Check – the bobbin is placed in bobbin case correctly

Follow these simple steps and you'll soon be enjoying your new project...

Happy Sewing!

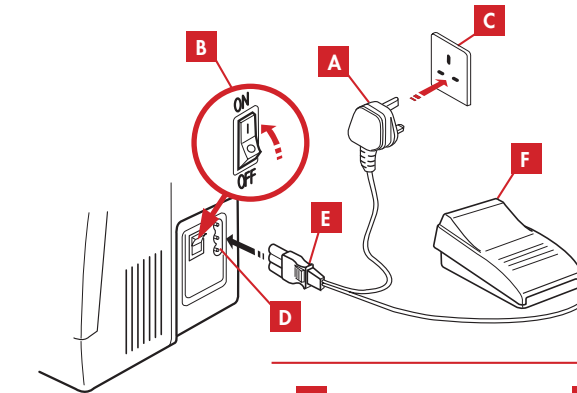
If you are experiencing a problem with your machine it is important to check the above procedures before returning it to the store. Should you have any queries please contact our Customer Service Department helpline on 0161 666 6011.

QUICK START CHECK GUIDE FOR SEWING



- Always use good quality thread
- Use the correct size/type of needle for the fabric you are stitching. (We recommend Janome or Schmetz needles.)
- Wind the bobbin evenly on the machine
- It is essential to use the correct bobbins as generic bobbins may cause damage to your machine.

CONNECTING TO POWER SUPPLY

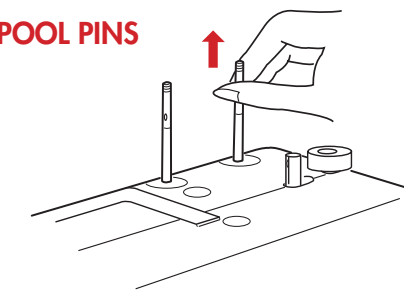


- | | | |
|----------------------------|-----------------------|------------------------|
| A Power supply plug | B Power switch | C Outlet Socket |
| D Machine socket | E Machine plug | F Foot control |

Before connecting the power cord, make sure the voltage and frequency shown on the machine conform to your power.

1. Turn off the power switch.
2. Insert the machine plug into the machine socket.
3. Insert the power supply plug into the outlet.
4. Turn on the power switch to turn on the power and sewing light.

SETTING SPOOL PINS



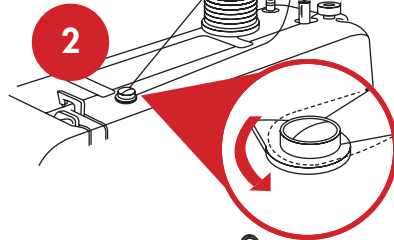
The spool pins are used for holding the spool of thread in order to feed thread to the machine. To use, pull up the spool pin. Push down for storage.

WINDING THE BOBBIN

Pull the handwheel out

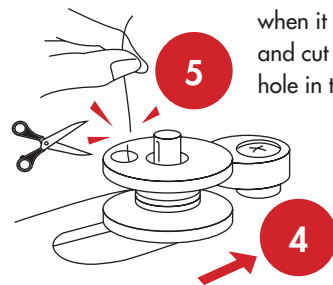


Draw the thread from spool. Guide the thread around the bobbin winder thread guide



3 Insert the thread through the hole in the bobbin from the inside to the outside. Put the bobbin on the bobbin winder spindle

With the free end of the thread held in your hand, depress the foot control. Stop the machine when it has made a few turns, and cut the thread close to the hole in the bobbin



4 Push it to the right engage



7 Push in the handwheel. (original position)

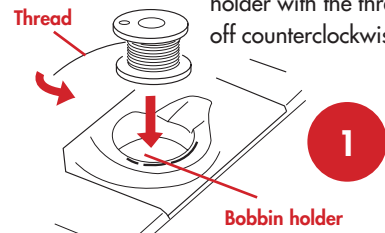
6 Depress the foot control again. When the bobbin is fully wound, stop the machine. Return the bobbin winder spindle to its original position by moving the spindle to the left, and cut the thread

TOP TIP: Remember to disengage and return the bobbin winder spindle when the machine stops.

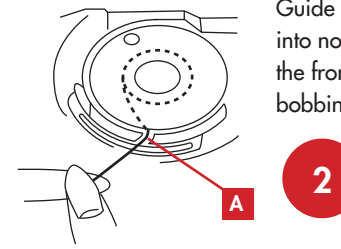
B

INSERTING A TOP LOADING BOBBIN

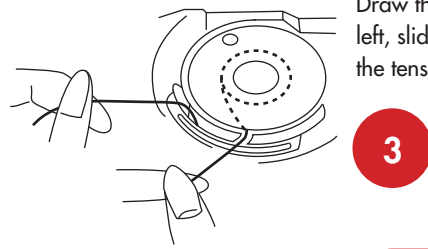
Place the bobbin in the bobbin holder with the thread running off counterclockwise



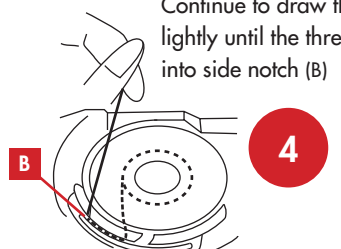
Guide the thread into notch (A) on the front of the bobbin holder



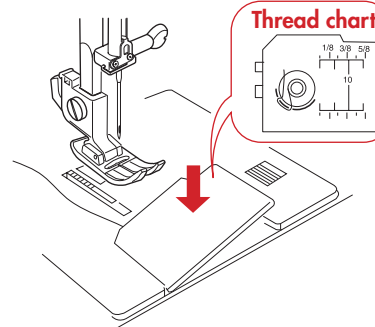
3 Draw the thread to the left, sliding it between the tension spring blades



4 Continue to draw the thread lightly until the thread slips into side notch (B)

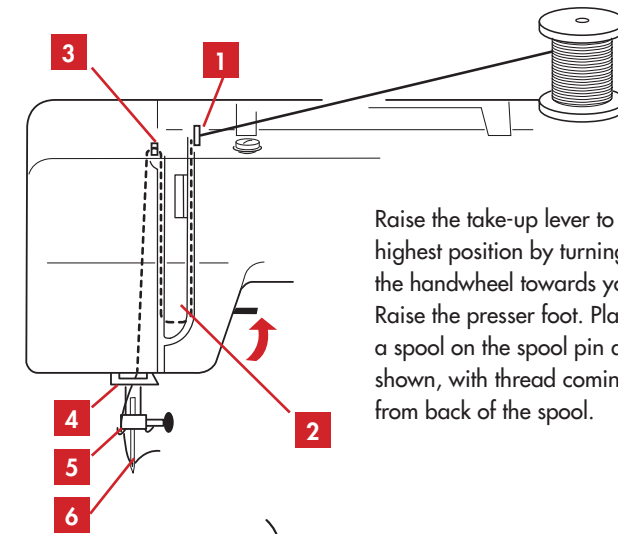


Thread chart

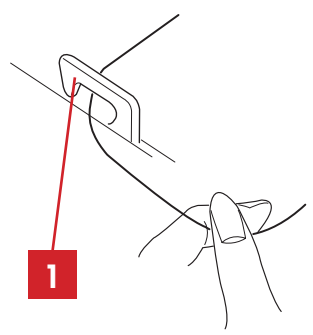


5 Pull out about 10cm (4") of thread to the rear. Refer to the threading chart shown on the hook coverplate. Attach the hook cover plate

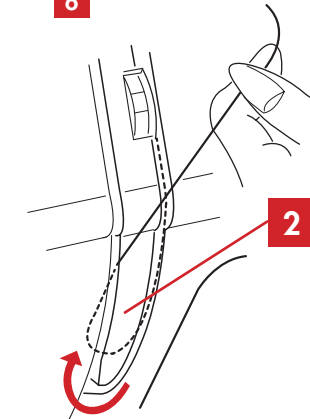
THREADING THE MACHINE



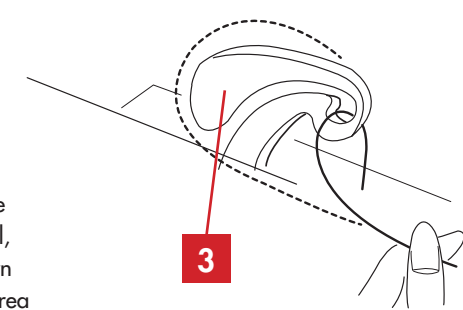
Raise the take-up lever to its highest position by turning the handwheel towards you. Raise the presser foot. Place a spool on the spool pin as shown, with thread coming from back of the spool.



Draw the thread into thread guide using both hands.



2 While holding the thread near spool, draw thread down into the tension area and then around the check spring holder.



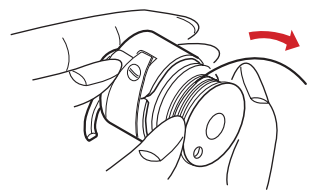
3 Firmly draw the thread up and through the take-up lever from right to left.

Q? DOES YOUR MACHINE HAVE A FRONT OR TOP LOADING BOBBIN? GO TO STEP A FOR TOP LOADING MACHINE or GO TO STEP B FOR FRONT LOADING MACHINE

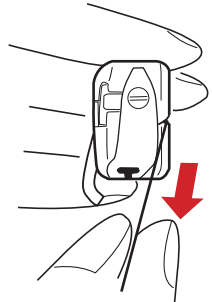
A

INSERTING A FRONT LOADING BOBBIN CASE

1 Place the bobbin into the bobbin case. Make sure the thread unwinds in the direction of arrow



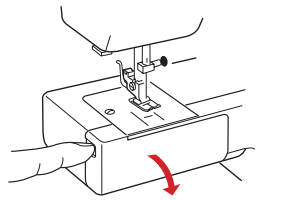
2 Pull the thread into the bobbin case slot



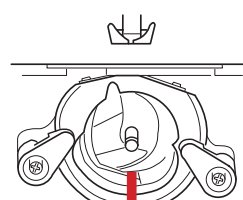
3 Draw the thread under the tension spring and into the delivery eye



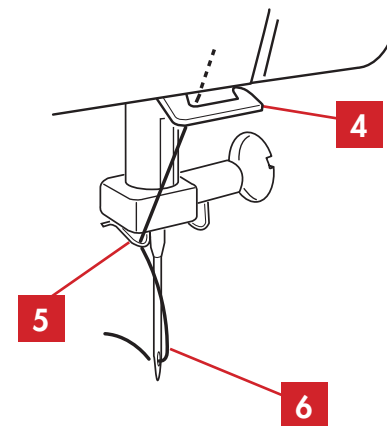
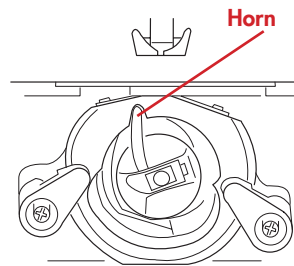
4 Open the hook cover



5 Raise the needle by turning the handwheel toward you. Take out the bobbin case by holding the latch



6 When inserting the bobbin case, place the horn into the recess of the hook race



4 Then draw the thread down and slip it into the lower thread guide.
5 Draw the thread down and slip it into needle bar thread guide on the left.
6 Thread the needle eye from the front to back.