

# ALUMINIUM VENETIAN BLIND

## Fitting Instructions

Please keep for future reference

### Tools required



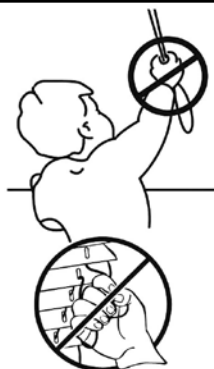
Optional



\* Slat  
cutter sold  
separately



## WARNING



Young children can be strangled by loops in pull cords, chains, tapes and inner cords that operate the product.

To avoid strangulation and entanglement, keep cords out of the reach of young children.

Cords may become wrapped around a child's neck.

Move beds, cots and furniture away from window covering cords.

Do not tie cords together.

Make sure cords do not twist and create a loop.

**PERSONS IN CHARGE OF CHILDREN ARE ULTIMATELY RESPONSIBLE FOR FOLLOWING THE SAFETY INSTRUCTIONS PROVIDED BY THE MANUFACTURER AND TO USE ANY SAFETY DEVICE SUPPLIED.**

The installation can be completed by non-professionals.

### Pack Contents

Blind

Fixing brackets

Screw pack

Tilt wand

Cleat

Should any component be missing, please call the Customer Care Department on **01543 272605**.

### Safety Recommendation

Always use a Step Ladder when working at heights.

DO NOT over reach. Always move the Step Ladder so that you are in a safe working position.

DO NOT hold or lean on the blind to support your weight.

We recommend you use two people for installation of larger blinds.

Take care when using power tools, use of a Residual Current Device (RCD) is recommended.

Always use eye protection when drilling. Beware of hidden pipe runs and cables.

No liability will be accepted for damage or injury caused by incorrectly installed or assembled product.

PLEASE KEEP OUT OF THE REACH OF YOUNG CHILDREN. SMALL PARTS - CHOKING HAZARD  
PLEASE KEEP THESE INSTRUCTIONS AND THE BATCH CODE ON THE PACKAGING FOR FUTURE  
REFERENCE IN CASE OF ANY QUERIES

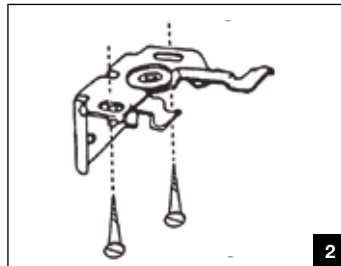
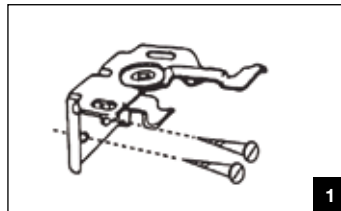
## Fixing the brackets

The blind must be fitted at least 1.5m from the floor.

1. Decide if the blind is to be fitted inside or outside the window recess.
2. The brackets can be 'face fixed' to the wall / window frame (fig. 1) or 'top fixed' to the recess / ceiling (fig. 2).
3. Using a pencil, tape measure and spirit level, mark the positions for the fixing brackets making sure they are both at the same level. The brackets should be fixed 8-10cm from each end of the headrail. If there are additional brackets they should be evenly spaced. This ensures the blind will operate and hang correctly.

**NOTE:** If you are fitting your blinds outside the recess, where possible allow a minimum of 100mm overlap on each side and above the window recess. When fixing to a dry line or stud walls please ensure the correct fixings are used. Be sure to use the correct size and type of drill bit for the wall type / surface you are fixing to. If you are unsure, please seek expert advice.

4. Carefully drill holes and secure brackets as required.



## Cutting the blind (if required)

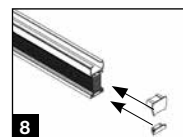
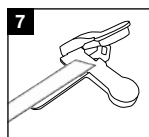
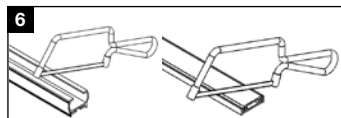
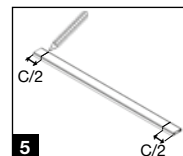
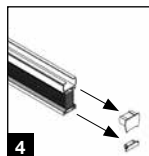
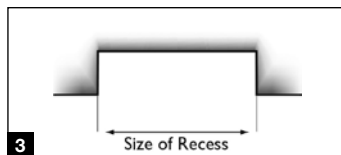
1. Measure the width of the window recess as shown in fig. 3.
2. Calculate the amount to cut (C). C is equal to the width of the blind minus the width of the window recess minus 1cm. Divide C by 2, you now have the amount to cut from each end.

**Please note that the maximum you can cut the blind is 7.5cm each side, ensure an equal amount is cut from each end.**

3. Remove both caps from the headrail and from the bottom rail as shown in fig. 4.
4. With the blind fully open (see positioning the cord stop) and placed onto a flat surface, mark the cutting line on both ends of the headrail and bottom rail as shown in fig. 5. (The amount to be removed must not exceed 15cm total.) Remove equal amounts from both sides.

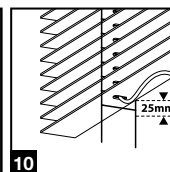
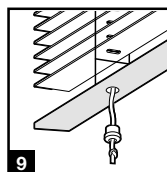
It may be advisable for 2 people to complete this operation.

5. Using a hacksaw cut the headrail and the bottom rail as shown in fig. 6 Then use the file to deburr the cut end.
6. With a slat cutter (sold separately) cut the slats individually as instructed on the slat cutter instructions fig. 7. File any sharp edges if necessary. Ensure that each slat is cut to the same size as the headrail and the bottom rail.
7. Replace the caps in the headrail and the bottom rail (fig. 8).

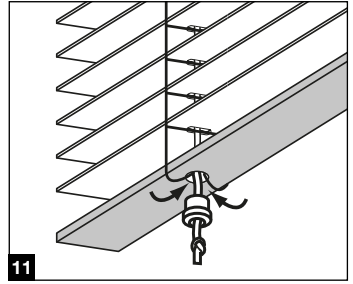


## Reducing the drop of the blind (if required)

1. Measure the drop required.
2. With the blind fully opened and placed on a flat surface, remove the plugs in the bottom rail and untie the knot in the lift cord (fig. 9).
3. Remove the base rail and surplus slats.
4. Cut off the excess ladder cord ensuring that at least 25mm surplus remains (fig. 10).

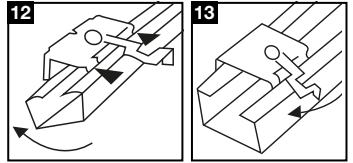


5. Replace the bottom rail, re-thread the lift cord and re-tie the knot in the end of the lift cord. Tuck the surplus ladder cord into the bottom rail, securing it with the plugs (fig. 11).



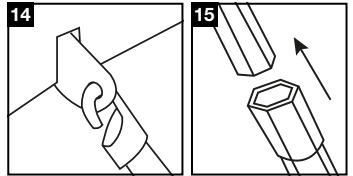
## Fitting the blind

1. Clip the headrail onto the bracket (fig. 12).
2. Secure in place by locking the lever (fig. 13).



## Fitting the tilt wand

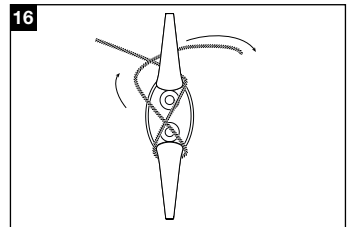
1. Hook the wand onto the control end (fig. 14).
2. If provided clip on the wand extension (fig. 15).



## Fitting the child safety cleat

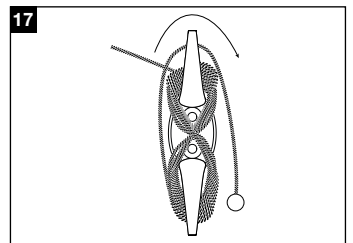
The child safety cleat is designed to keep loose cords out of reach of young children and avoid the risk of strangulation. See fig. 16.

1. The cleat shall be installed as close to the headrail as possible and, in all cases, not less than 1.5m from the floor.
2. Mark and secure the cleat with the long screw provided, ensure that the fixing is secure.



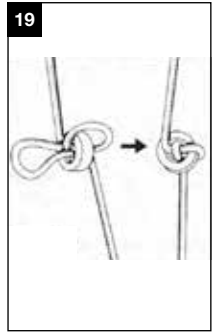
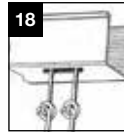
Each time the blind is operated the cords should ALWAYS be wrapped around the cleat to ensure that they cannot be reached by young children.

1. Wrap the cord tightly around the cleat in a figure of 8 motion. See fig. 16.
2. When nearing the end of the cord, loop the remaining length over the body of the cleat allowing the minimal amount of cord to drape from the cleat as possible. (You may need to repeat the figure of 8 motion again). See fig. 17.
3. Check the cords at regular intervals to ensure they have not become entangled and formed a loop.



## Positioning the cord stop

1. Install the blind as directed, making sure that the head rail is securely fastened. The cord stops are preinstalled 25-50mm from the head rail, they need to be loosened (but do not untie them) and moved down the cord by hand before you can lower the blind (fig. 18).
2. Lower the blind to the maximum desired length and lock in place.
3. Push both the cord-stop and the loosened knot toward the head rail until the cord-stop is 25-50mm (1-2") below the head rail (fig. 19).
4. Hold the cord-stop in place and pull firmly on the pull cord to re-tighten the knot (fig. 20).
5. Repeat steps 3 & 4 for the other cord stop.

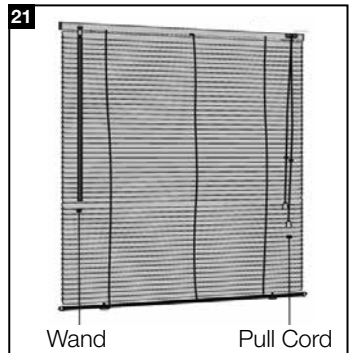


## Operating the blind - See fig. 21.

Always tilt the slats to the horizontal (open) position before raising or lowering the blind, this increases the life of the blind.

To lower the blind (fig. 22):

1. Bring the cords across the face of the blind.
2. Gently tug the cords to release the cord lock and allow the cords to slip through your finger at this angle.
3. At the desired drop put the cords back in the vertical position to re-engage the cord lock.
4. Wrap the cords on the cleat as described in the 'Fitting the child safety cleat' section.



To raise the blind (fig. 23):

1. Bring the cords across the face of the blind.
2. Pull the cords at this angle and raise the blind.
3. At the desired height put the cords back in the vertical position to re-engage the cord lock.
4. Wrap the cords on the cleat as described in the 'Fitting the child safety cleat' section.

To tilt the slats:

1. Rotate the wand to tilt the slats to the desired angle.

