

CORDLESS VERTICAL BLIND

Fitting Instructions

Please keep for future reference

Safety Recommendation

Always use a step ladder when working at heights.

DO NOT over reach. Always move the Step Ladder so that you are in a safe working position.

DO NOT hold or lean on the blind to support your weight.

We recommend you use two people for installation of larger blind.

Take care when using power tools, use of a Residual Current Device (RCD) is recommended.

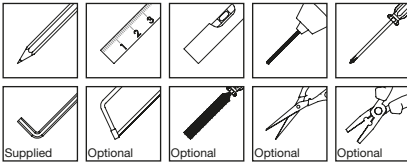
Always use eye protection when drilling. Beware of hidden pipe runs and cables.

No liability will be accepted for damage or injury caused by incorrectly installed or assembled product.

PLEASE KEEP OUT OF THE REACH OF YOUNG CHILDREN. SMALL PARTS - CHOKING HAZARD

PLEASE KEEP THESE INSTRUCTIONS AND THE BATCH CODE ON THE PACKAGING FOR FUTURE REFERENCE IN CASE OF ANY QUERIES

Tools required



Please read these instructions carefully and check the contents of the pack before attempting to assemble and fix this product.

Pack Contents

- Headrail (with gliders and wand)
- Headrail fixing brackets
- Fixing screws and wall plugs
- Small allen key
- Pack of fabric vanes
- Vane hangers
- Vane bottom weights
- Stabilising chain

Should any component be missing, please call the Customer Care Department on **01543 272 605**.

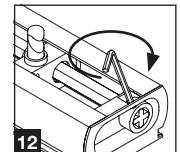
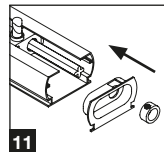
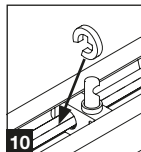
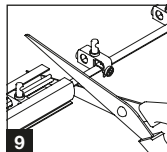
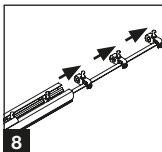
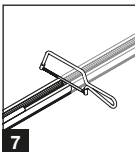
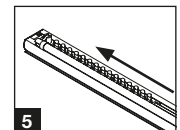
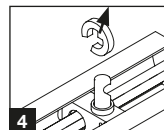
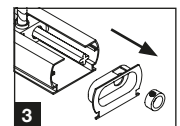
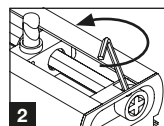
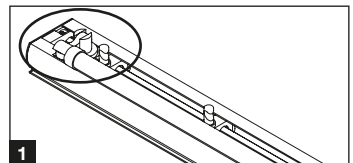
Blind length required

Outside window recess: Measure your window and add 20cm (10cm overlap on each side).

Inside window recess: Measure your recess and subtract 1cm.

Cutting the Headrail

1. Identify the wand control end. (fig.1)
Note: Do not remove the rubber band.
2. Loosen the locking ring at the opposite end of the wand control with the allen key. (fig.2)
3. Remove the locking ring and the plastic end cap. (fig.3)
4. Using pliers, remove the plastic locking ring found by the end glider and keep safe. (fig.4)
5. Slide all the gliders toward the wand control end. (fig.5)
6. Mark the length of blind required starting from the wand control end. (fig.6)
7. Cut the headrail and tilting bar (fig.7). File to remove burrs.
8. Carefully pull back the gliders. Depending on the width of the cut, some gliders may come off the headrail. (fig.8)
9. If gliders are outside the headrail, cut the plastic link as near as possible to the last glider inside the rail. (fig.9)
10. Place the plastic clip back in front of the glider furthest away from the wand control. (fig.10)
11. Place the end cap in the headrail and the locking ring back on the tilt rod (fig.11) and secure it using the allen key (fig.12).
12. Check that the blind is the right length.



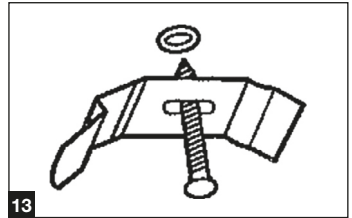
Installing the Headrail

Brackets should be installed no more than 150mm from each end with intermediate brackets spaced evenly.

Ensure that the correct wall fixings are used for your wall type. If in doubt seek professional advice

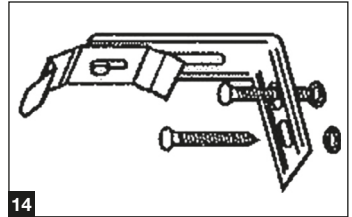
Ceiling fixing

1. The blind needs to be installed at least 5cm from the wall.
2. Simply screw the spring clips directly to the ceiling or top of the recess (Fig.13).



Face fixing

1. The blind should be installed around 10cm above the window/window recess.
2. Attach the spring clips to the "L" shaped brackets with the small nuts and bolts as shown, then fix to the wall or frame (Fig.14).



Fitting the blind

The wand control can be placed either on the left or the right of the installation.

1. Remove the rubber band attached to the wand control.
2. Position the top of the headrail against the spring clips and click into place.
3. Please note, to remove for cleaning etc, gently prise away the headrail from the clips using a screwdriver.

Fitting the Fabric Vanes

1. Measure the required height of the vanes.
2. Fold the fabric vane over the plastic rod ensuring that the fabric is folded in the same direction as the bottom pocket. (fig.15)
3. Slide the folded vane into a vane hanger. (fig.16)
4. Twist the vane control so all hooks on the gliders face the same way in the open position (vane hangers perpendicular to the headrail, fig.17)
5. Fit the vane hanger to the headrail hook unit. (fig.18)
6. Place a weight in the bottom pocket of the vane with the chain links facing the top.
7. If adjustment is required, remove the vane from the vane hanger and increase or decrease the length as necessary.
8. When satisfied with the length of the vane, trim the excess fabric with a sharp pair of scissors. Repeat this process for the remaining vanes. (fig. 19)
9. Fit the stabilising chain starting at one end of the blind, keeping the vanes parallel and leaving around 10cm of cord in between the vanes. Repeat this on both sides of the blind. If any vanes have not been used it may be necessary to shorten the length of the chain as required.
10. If the vanes are not hanging evenly, operate the wand in any direction until it comes to a stop then continue to rotate further, the clicking sound is the vanes lining up. Repeat this process in the opposite direction until the vanes hang evenly.

