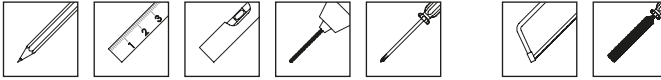


Bay Pole Kit

Fitting Instructions

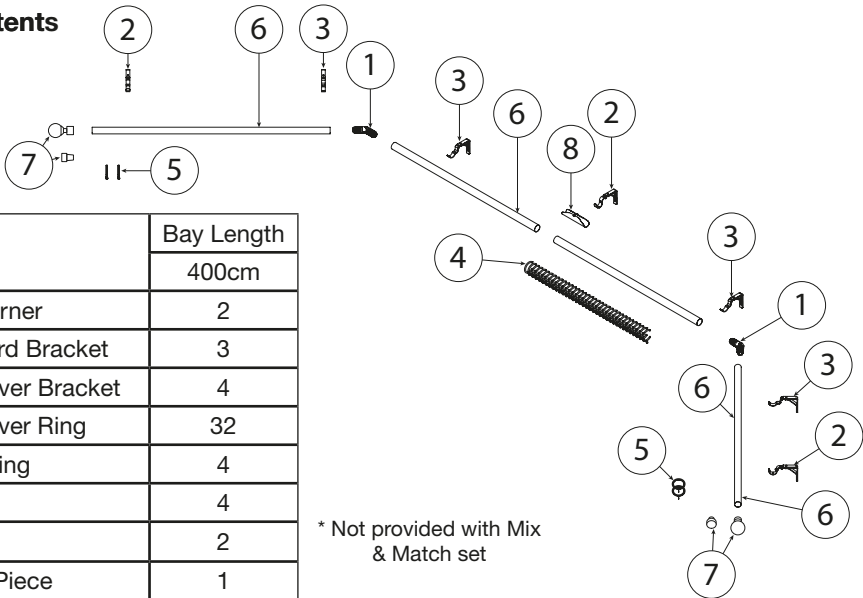
Please keep for future reference

Tools required



Please read these instructions carefully and check the contents of the pack before attempting to assemble and fit this product.

Pack Contents



		Bay Length
		400cm
1	Bay Corner	2
2	Standard Bracket	3
3	Pass Over Bracket	4
4	Pass Over Ring	32
5	Solid Ring	4
6	Pole	4
7	Finial*	2
8	Joiner Piece	1

* Not provided with Mix & Match set

Should any component be missing, please call the Customer Care Department on **01543 272605**

Safety Recommendation

Always use a step ladder when working at heights.

DO NOT over reach. Always move the Step Ladder so that you are in a safe working position.

DO NOT hold or lean on the pole to support your weight.

We recommend you use two people for installation of larger poles.

Take care when using power tools, use of a Residual Current Device (RCD) is recommended.

Always use eye protection when drilling. Beware of hidden pipe runs and cables.

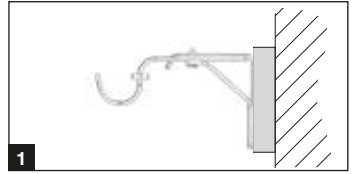
No liability will be accepted for damage or injury caused by incorrectly installed or assembled product.

PLEASE KEEP OUT OF THE REACH OF YOUNG CHILDREN. SMALL PARTS - CHOKING HAZARD
PLEASE KEEP THESE INSTRUCTIONS AND THE BATCH CODE ON THE PACKAGING FOR FUTURE
REFERENCE IN CASE OF ANY QUERIES

Fitting Recommendation

We recommend for better support of the installation to fit the bracket to a secure wooden batten which is larger than the bracket backplate. (Fig.1)

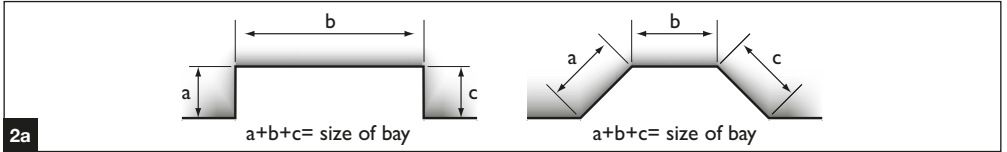
If you are unsure if the product is suitable please ask advice from a professional builder or your DIY store.



Measuring the Window (Fig.2a,2b,2c)

Straight lengths over 180cm will require a centre support bracket.

Should you wish to dress your curtains outside of the bay recess, this is possible by reverse bending 2 extra corner joints and installing extra brackets (both sold separately).



Lay the bay pole parts out on the floor of your window (fig.2b) to calculate the position of the brackets.

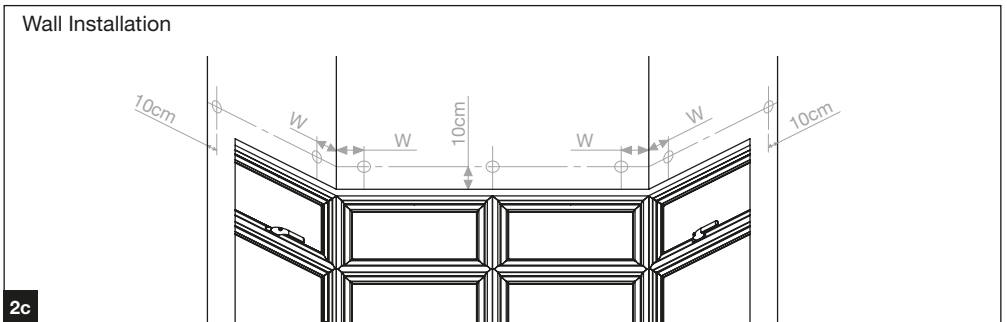
For the pass over brackets, calculate the bracket position from the corner of the wall (W) so that the centre of the bracket is 4cm from the joint between the bay corner and the adjacent pole. You will need to bend the bay corner to the correct angle.

For the Standard brackets, calculate the bracket position so its centre is around 10cm from where you want the pole to end.

The third Standard bracket should be aligned with the centre of the window bay and should support the centre joint if required.

DO NOT CUT THE POLES YET.

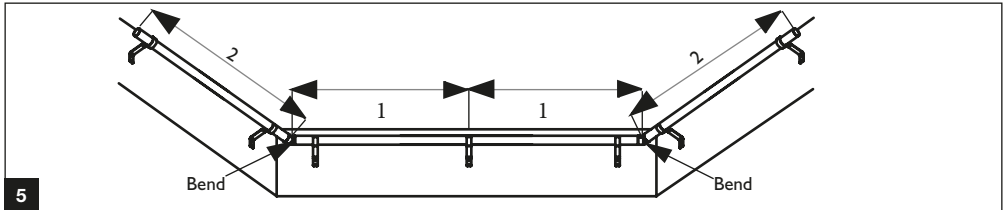
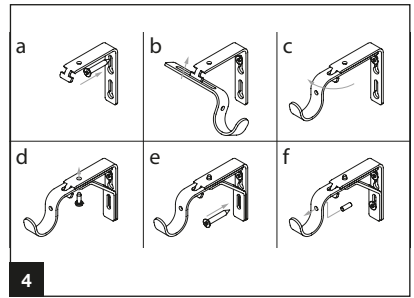
Mark the pole centre line on the wall 10cm over the top edge of the window and then mark the positions of the brackets on the wall using fig.2c below as a guide.



Note: Use the correct wall plugs and screws for the type of wall to which you are mounting your pole. If you are unsure please consult your local builders merchant or DIY store.

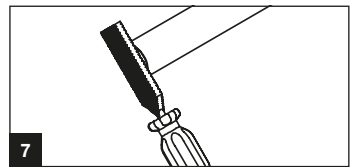
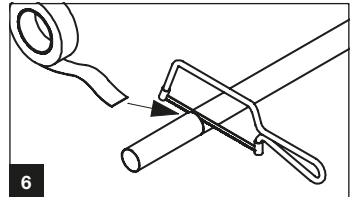
Fixing the Bracket

1. Drill the wall in marked position using a suitable masonry drill bit and insert the wall plugs where required, if in doubt consult your local DIY store. Fix the brackets to the wall, referring to Fig 4 for the correct assembly order.
2. If any adjustment is required, loosen the bracket locking screw and position correctly. Once in place re-tighten the locking screw.



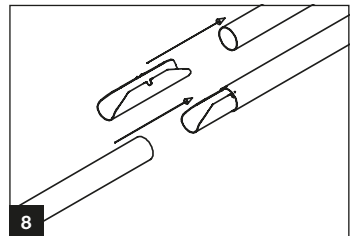
Cutting the pole

1. Starting in the middle of the window (Fig.5), build the pole outwards cutting the poles to length as required.
2. To calculate the length of No 1, place one of the 1m poles into the centre and end brackets with the end of the pole in the corner. Mark the centre of the middle bracket on the pole, then cut off the excess, repeat for the other poles making sure both No 1 poles are equal length.
3. Calculate length No 2 by adding 10cm to the measured distance between the brackets centres.
4. Mask area to be cut to avoid damaging the pole and cut the pole to length. (Fig.6)
5. File sharp edges to avoid injury or damage to other components. (Fig.7)



Joining poles (Fig.8)

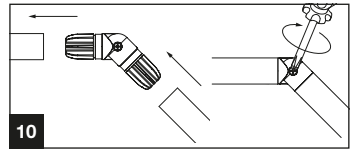
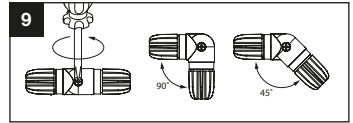
1. Join the poles in the centre by sliding the joiner piece into the cut end of the poles (length No 1).
2. Take care to push equal lengths of the joiner into each pole.
3. Always join the cut ends of the pole.
4. Pole joints should always be at the half way point of the installation length and supported with a bracket.



Fitting the Bay Corner

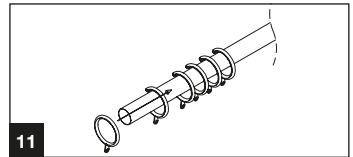
1. Adjust the bay corner into the desired angle by loosening the segment screw. Once in the desired position slightly tighten the screw. (fig.9)
2. Slide the poles onto the plastic bung ends of the bay corners.
Note: Fully secure the screws on the bay corner once the bay pole is fully installed. (fig.10)

Bay corners should always be supported by two pass over brackets.



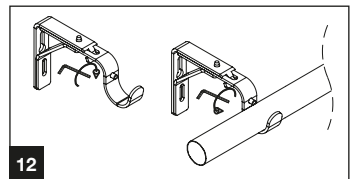
Preparing the curtain (fig.11)

1. Leave the solid rings aside, slide an equal amount of pass over rings on each side of the bay (approximately 1 ring per 10cm of pole).
2. Finish each side by adding 1 solid ring per side onto the pole.



Fixing the pole (fig. 12)

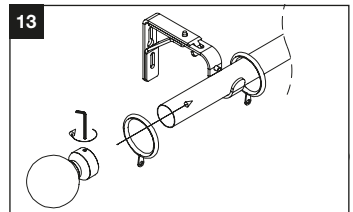
1. Loosen the grub screw on the bracket.
2. Place pole in bracket.
3. Tighten the grub screw until the pole does not slide in the bracket.



Fixing the finial

Finial with grub screw (fig.13)

1. Place one of the full rings on the pole after the bracket.
2. Slide the finial onto the pole and tighten the grub screw until the finial is secure.



Finial with joining bung (fig.14)

1. Place one of the full rings on the pole after the bracket.
2. Push the plastic bung end of the finial into the pole until the finial is secure.

