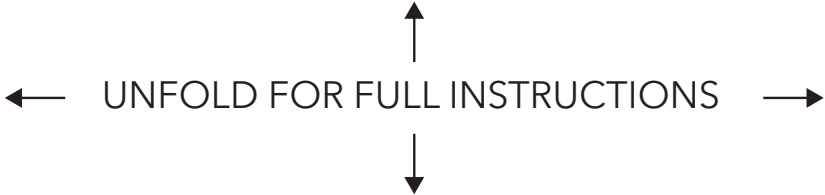
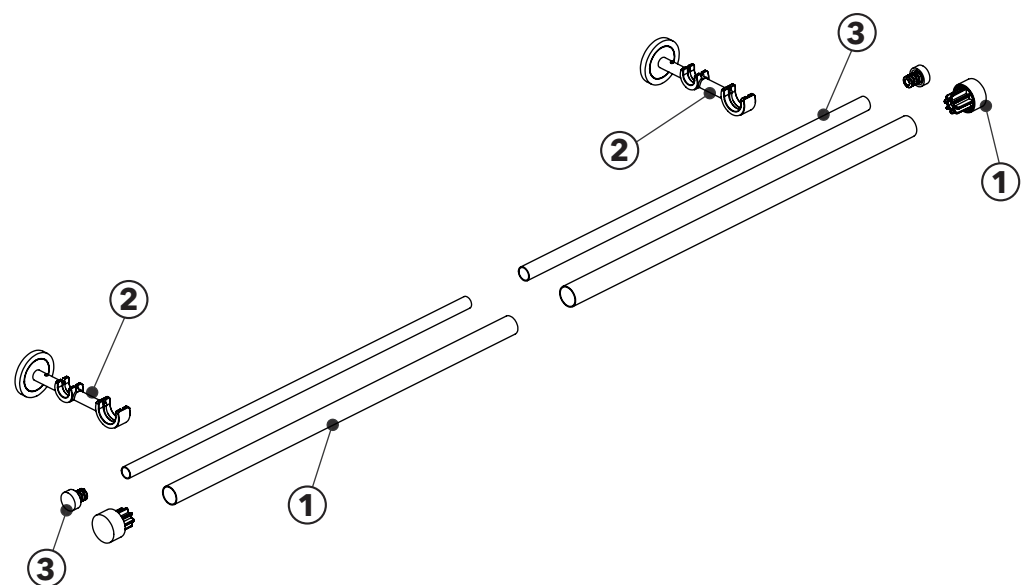


# Double Layer Extendable Pole Kit

## INSTRUCTIONS



### Safety Recommendations

- Always use a step ladder when working at height.
- We recommend you use two people for the installation of larger poles.
- DO NOT over reach. DO NOT hold or lean on the pole to support your weight. Always move the step ladder so that you are in a safe working position.
- Take care when using power tools, use of a Residual Current Device (RCD) is recommended. Always use eye protection when drilling. Beware of hidden pipe runs and cables.
- No liability will be accepted for damage or injury caused by incorrectly installed or assembled product.

PLEASE KEEP OUT OF THE REACH OF YOUNG CHILDREN. SMALL PARTS - CHOKING HAZARD.

Please keep these instructions and batch code from packaging for future reference.



7751L--03

www.dunelm.com

## Parts and fittings

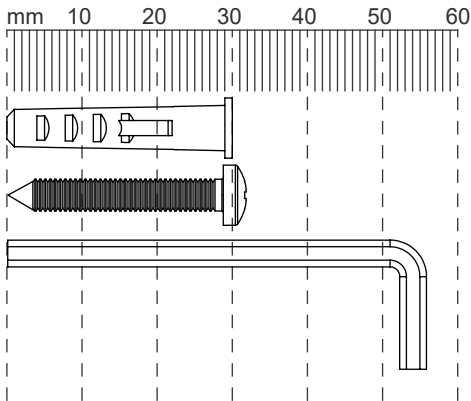
Should any component be missing, please call the Customer Care Department on **01543 272605**

Ref	Visual	Qty
1		2
2		2*
3		2

\*Quantities will vary dependant on pole size  
\*Rings are available to purchase separately, use 1 ring per 10cm of pole ensuring an equal amount of rings are used for each curtain  
\*Finial design may vary depending on the kit purchased.

Ref	Dimensions	Qty
A	6X30mm	-
B	4X32mm	-
C	Allen key	-

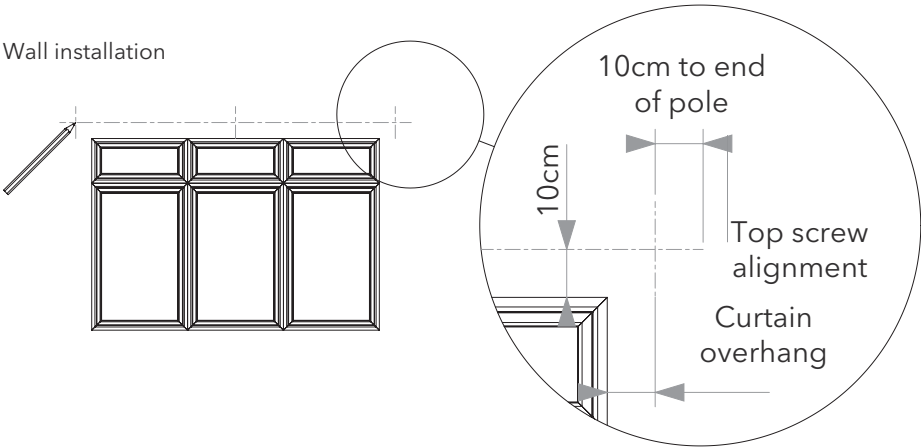
Quantities will vary dependant on pole size



## Installation guidance

### Step 1 - Positioning the brackets:

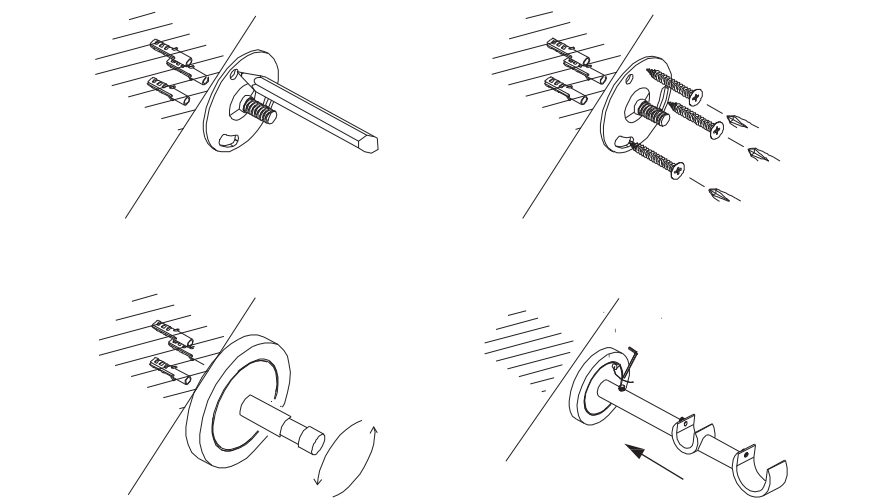
Mark a line where the bracket's top screw will be. This is usually around 10cm above and 10cm to the side of the window. A pole over 180cm will need a centre bracket, position this in the middle of the pole's length. The installation should be centred with the window if possible.



Step 2 - Fixing the brackets:

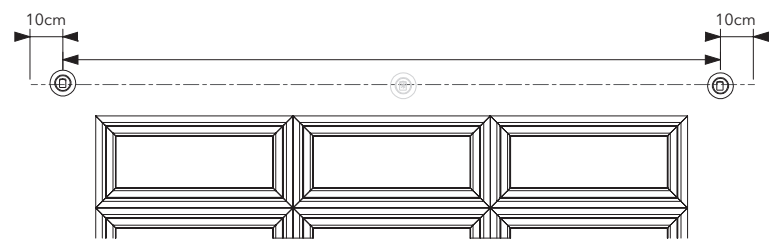
Note: Use the correct wall plugs and screws for your wall type. If you are unsure, please consult your local builder’s merchant or DIY store.

Mark the fixing hole positions (the backplate can be used as a template). Drill the holes and fit wall plugs if necessary. Install the screws and ensure the plates are aligned. Secure the backplate by tightening the screws. Secure the bracket base by screwing onto the backplate.



Step 3 - Preparing the pole:

Simply extend the poles to the desired length. You should always leave 10cm either side of the end brackets to allow for the finial to be placed.



Step 4 - Installing the back pole with tab/voile curtains:

Ensure that the screws/grub screws on the brackets are loose and place the pole(s) in the brackets. Lift one end of the pole and slide the curtain header tab or eyelet onto the pole ensuring that the last curtain header tab or eyelet is placed in between the bracket and the end of the pole. Repeat on the other end of the pole. Secure the finial. Tighten the screws/grub screws on the brackets once you are happy with the installation.

Note: the smaller diameter poles are to be inserted into the brackets that are labelled with 16mm and 25mm bracket.

