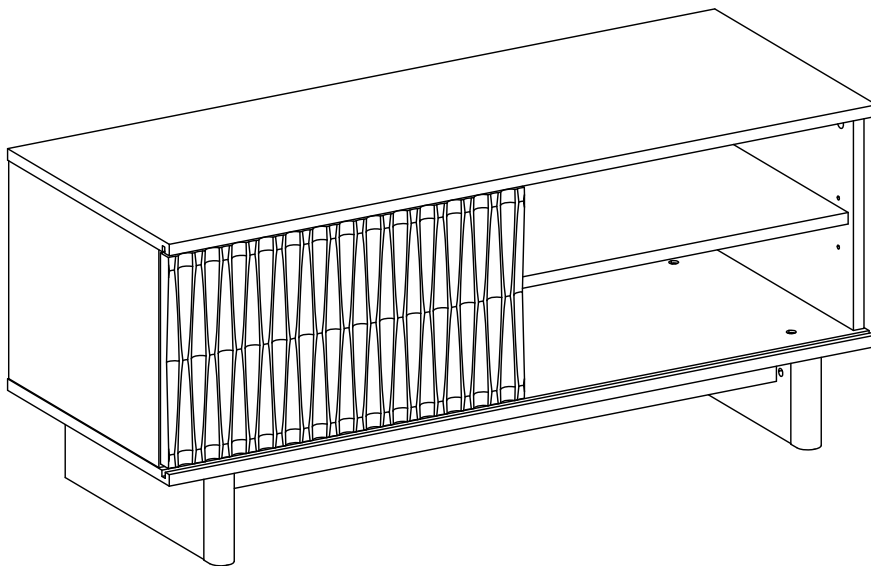


Inga Small TV Unit

INSTRUCTIONS



Thank You

Dear Customer

Check the pack and make sure you have all the parts listed below. If not, contact the helpline on 03451 656565 who will be able to help you.

Safety advice

IMPORTANT - The first step you need to take is to ensure your safety! Please take the time to read and understand these instructions before assembling your furniture.

Please keep these instructions for furniture reference.

Keep children and animals away from the assembly area. This furniture contains small parts that could cause choking if swallowed.

Keep all plastic wrapping materials away from babies and children to avoid danger of suffocation.

Ensure that all packaging is disposed of carefully and responsibly.

From time to time check that there no loose fittings on the unit, re-tighten when necessary.

Two people maybe required for the assembly of this product.

Once items are part or fully assembled, they are not returnable unless faulty.

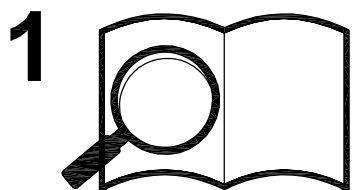
This item is not for outdoor use - unless stated otherwise.

Some items will be supplied with a wall fixing strap, which we recommend is used to secure the item to the wall, to prevent a child from accidentally pulling furniture over. Furniture can be dangerous if incorrectly installed. Assembly should be carried out by a competent person. No liability will be accepted for damage or injury caused by incorrectly installed or assembled furniture.

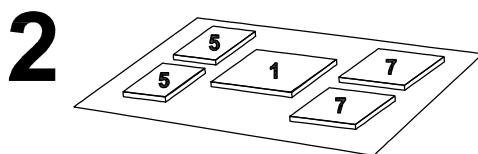
Top Tips Before You Start !

WARNING

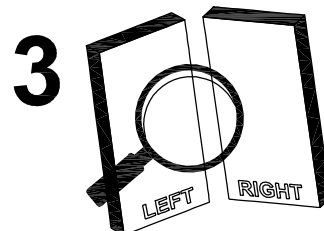
The Furniture is Exempt From Our Home Approval Policy Once Assembled.



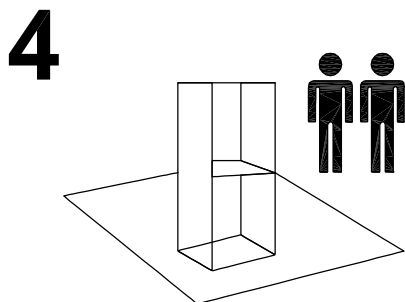
Read the Assembly Instruction carefully, check that all Parts and Hardwares are present !



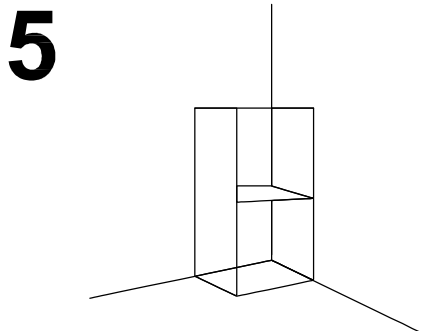
Layout all of the parts on a soft surface, and separate in groups for the same numbers to prevent any damage and easy identification. (Note: protected surface required for High Gloss Finished Items).



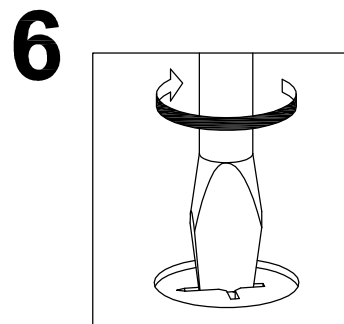
Carefully identify each parts required on that step, especially those that are similar. (e.g., Left-Right).



Please ensure you have sufficient space and people (as indicated in Page 1) to assemble the product safely.



Where possible, all items are assembled near to the area in which they will be place in use, to avoid moving the product unnecessary once assembled.



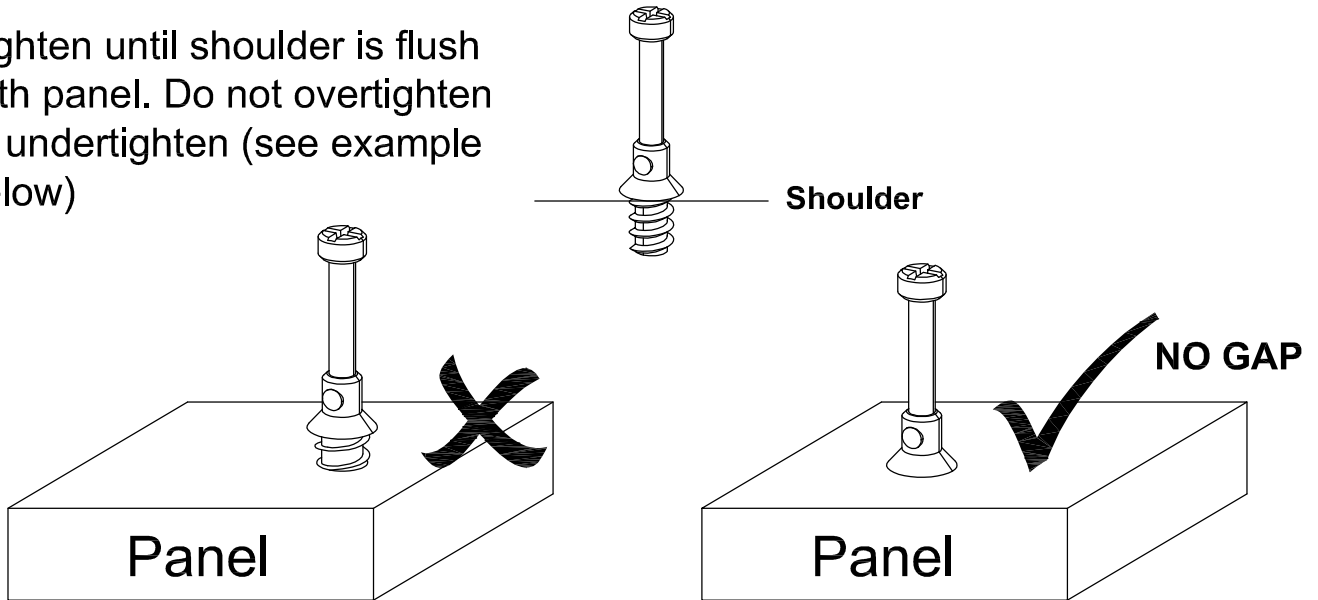
During assembly please take care not to over-tighten any fittings, as this may damage the product.

Note : For faster assembly strongly recommended to assemble sub-assembly part before the main body (e.g. drawer, hutch).

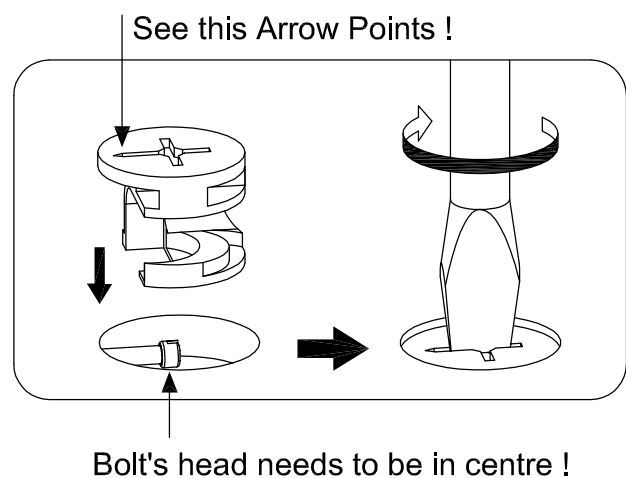
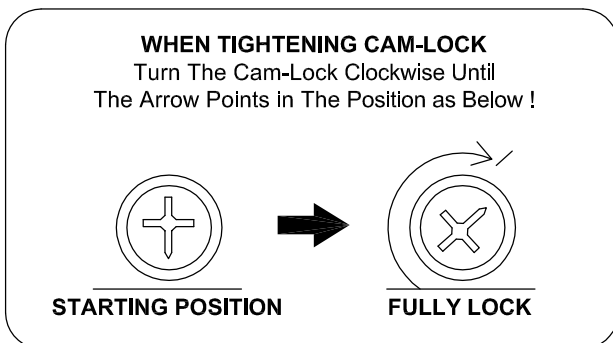
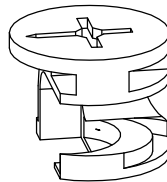
Special Tips for Fitting Minifix Cam (Cam-Lock), and Minifix Bolt (Cam-Bolts)

CAM-BOLT

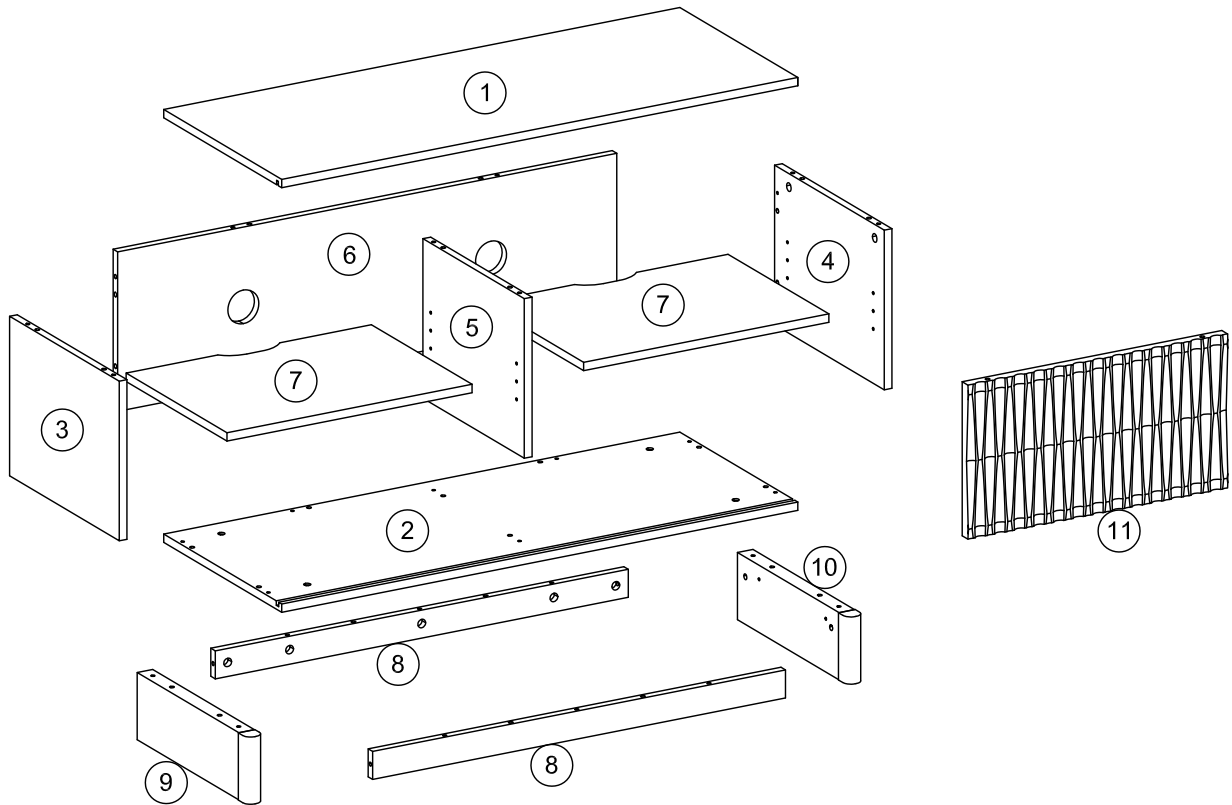
Tighten until shoulder is flush with panel. Do not overtighten or undertighten (see example below)



CAM-LOCK



Component Parts Supplied

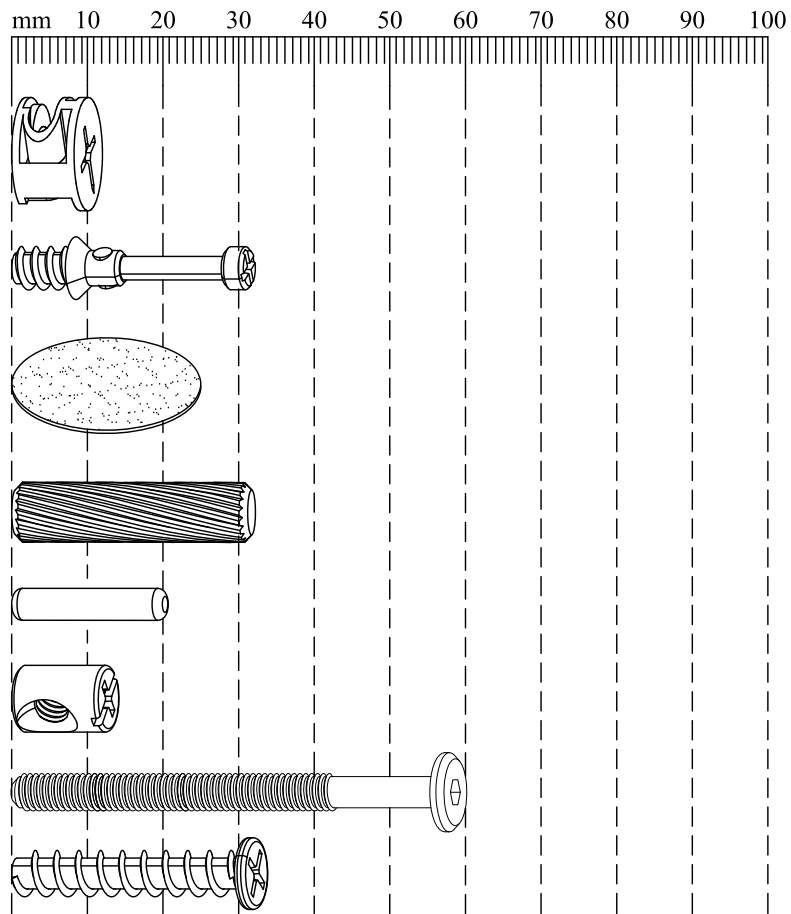


Ref	Description	Dimensions	Qty
①	Top panel	1000mm x 396mm x 15mm	1
②	Base panel	1000mm x 396mm x 15mm	1
③	Left panel	285mm x 368mm x 15mm	1
④	Right panel	285mm x 368mm x 15mm	1
⑤	Divider panel	285mm x 340mm x 15mm	1
⑥	Rear Panel	967mm x 285mm x 15mm	1
⑦	Adjustable shelf	475mm x 338mm x 15mm	2
⑧	Bottom large support	800mm x 50mm x 15mm	2
⑨	Left leg	356mm x 120mm x 32mm	1
⑩	right leg	356mm x 120mm x 32mm	1
⑪	Door	275mm x 503mm x 20mm	1

Parts and fittings

Fixtures and fittings supplied (actual size)

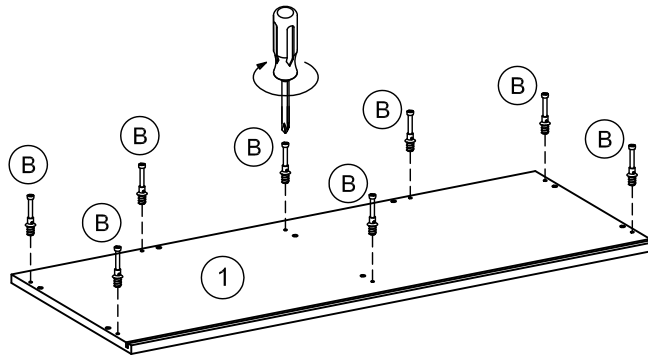
Ref	Dimensions	Qty
Ⓐ	Dia.15 x 12mm	22
Ⓑ	7.5mm x 32mm	22
Ⓒ	Dia.25mm	30
Ⓓ	8mm x 32mm	28
Ⓔ	5mm x 20mm	2
Ⓕ	Dia.10 x 13mm	4
Ⓖ	6mm x 60mm	4
Ⓗ	10mm x 33.5mm	8



Fixtures and fittings supplied (not to scale)

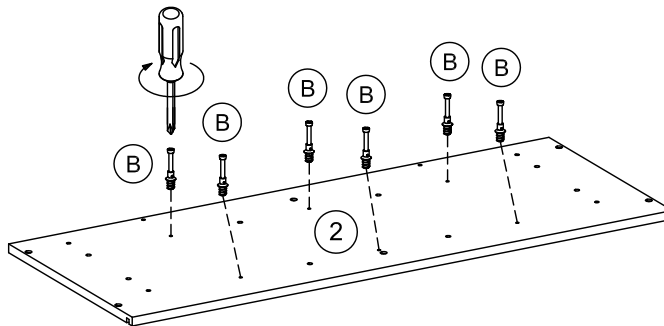
Ref	Item	Visual	Qty
Ⓘ	Cable holder		2
Ⓙ	Shelf support		8
Ⓚ	Fix pin		2
Ⓛ	Push pin		2
Ⓜ	Allen key		1

Step 1:



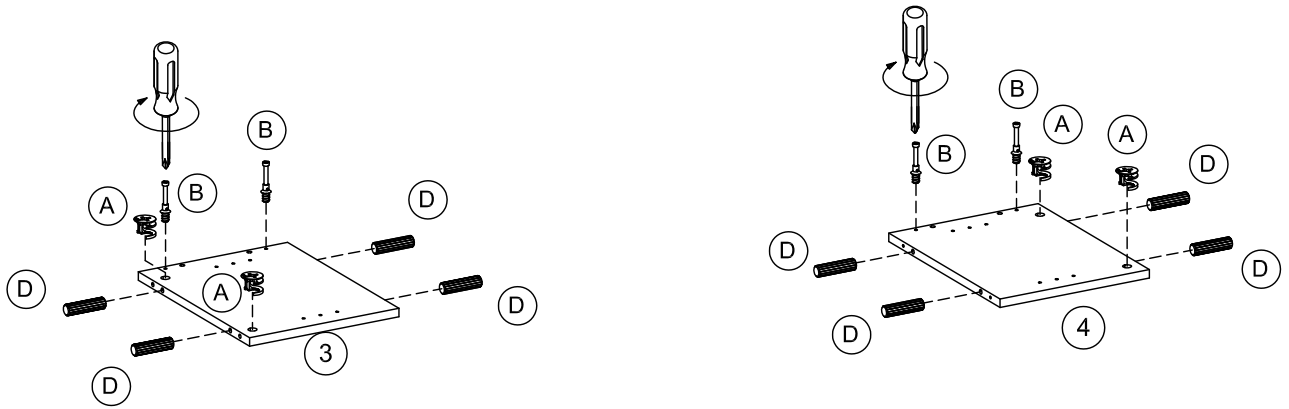
Attach cam-bolt (B) to top panel (1) using screwdriver.

Step 2:



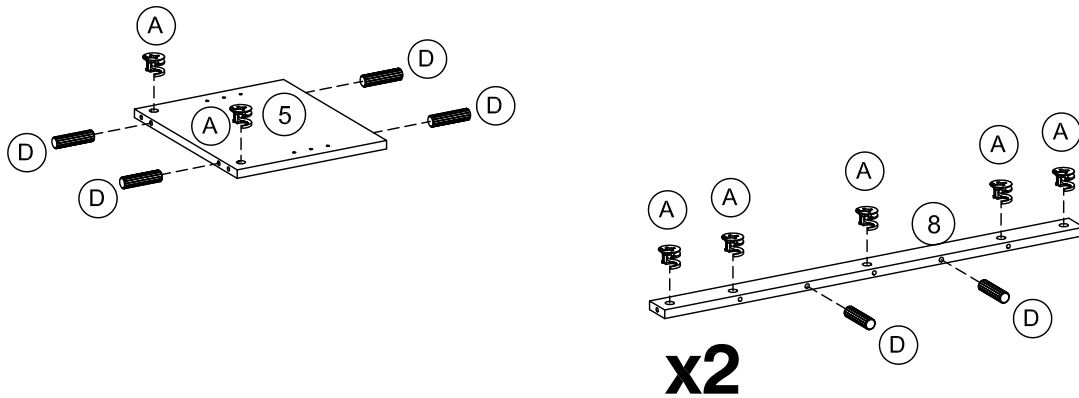
Attach cam-bolt (B) to Base panel (2) using screwdriver.

Step 3:



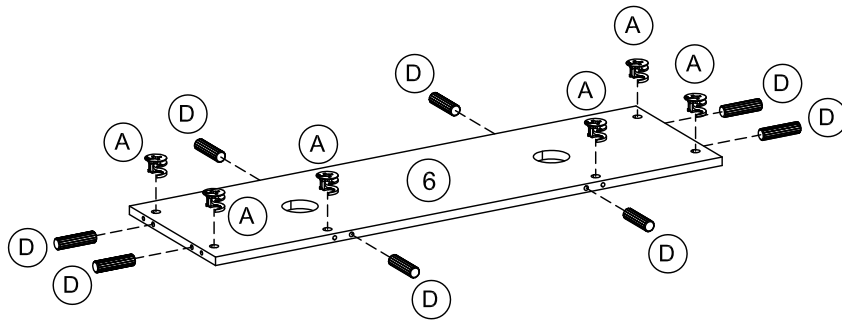
Attach cam-bolt (B) to left panel (3) and right panel (4) using screwdriver.
Insert cam-lock (A) and dowel (D) into left panel (3) and right panel (4).

Step 4:



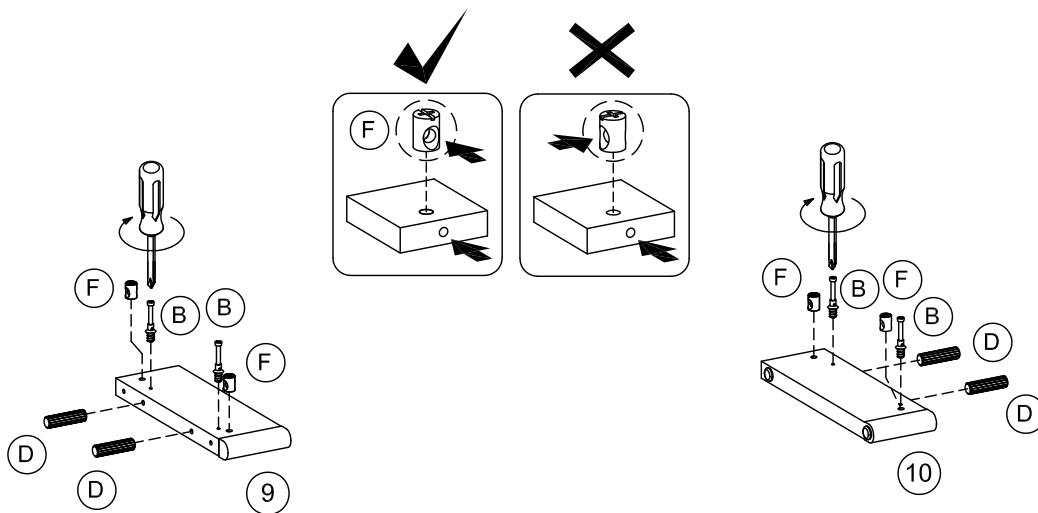
Insert cam-lock (A) and dowel (D) into Divider panel (5) and bottom large support (8).

Step 5:



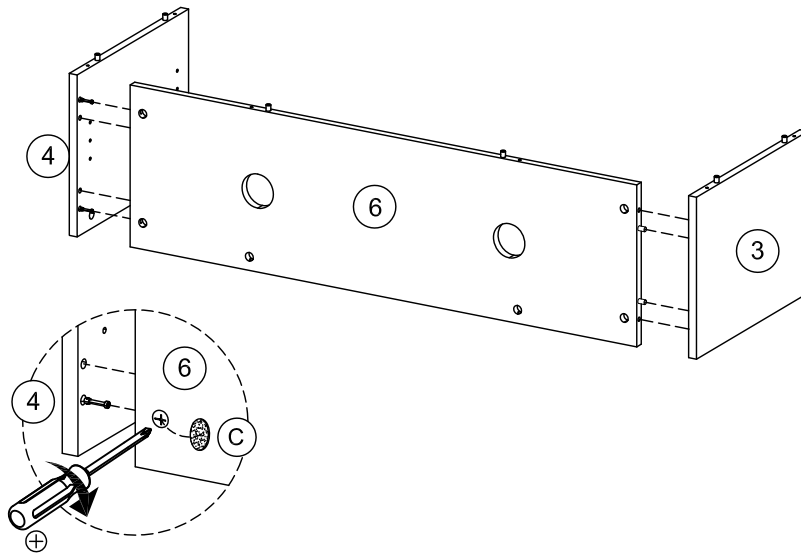
Insert cam-lock (A) and dowel (D) into rear panel (6).

Step 6:



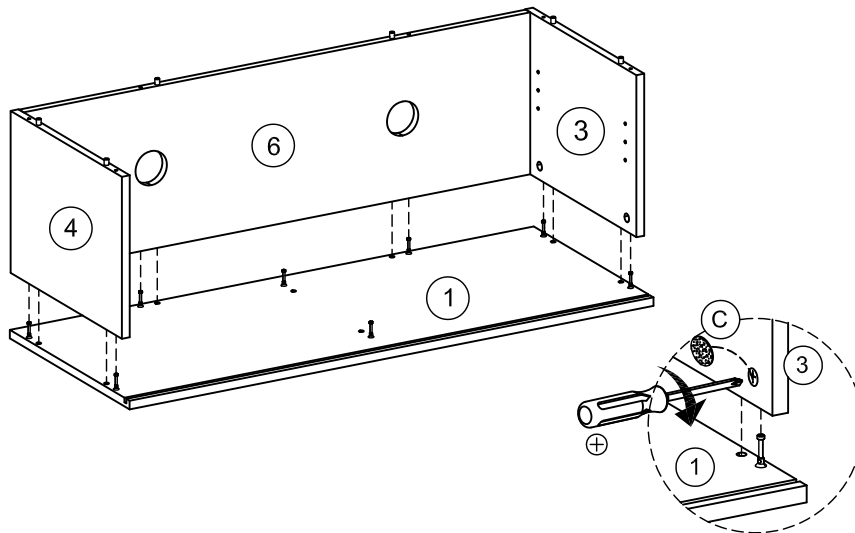
Attach cam-bolt (B) to left leg (9) and right leg (10) using screwdriver.
Insert barrel nuts (F) and dowel (D) into left leg (9) and right leg (10).

Step 7:



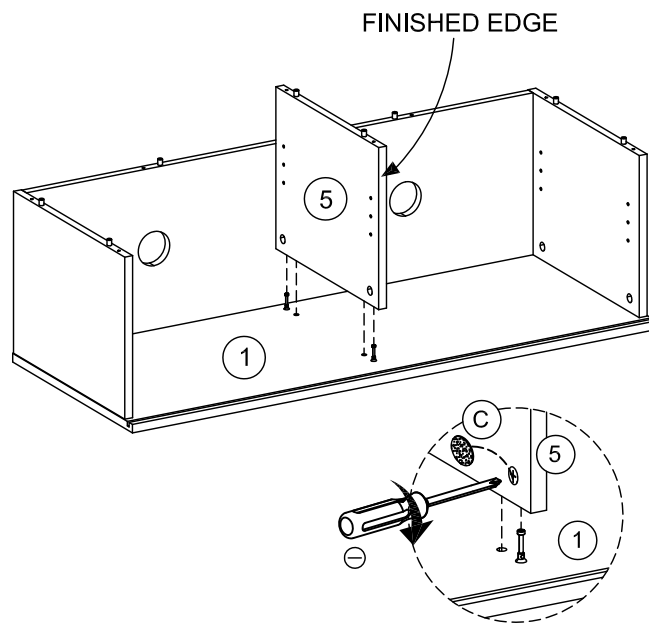
Attach left panel (3) and right panel (4) to rear panel (6) as shown.
Turn the cam-lock (A) clockwise to lock using screwdriver, then paste cam-sticker (C).

Step 8:



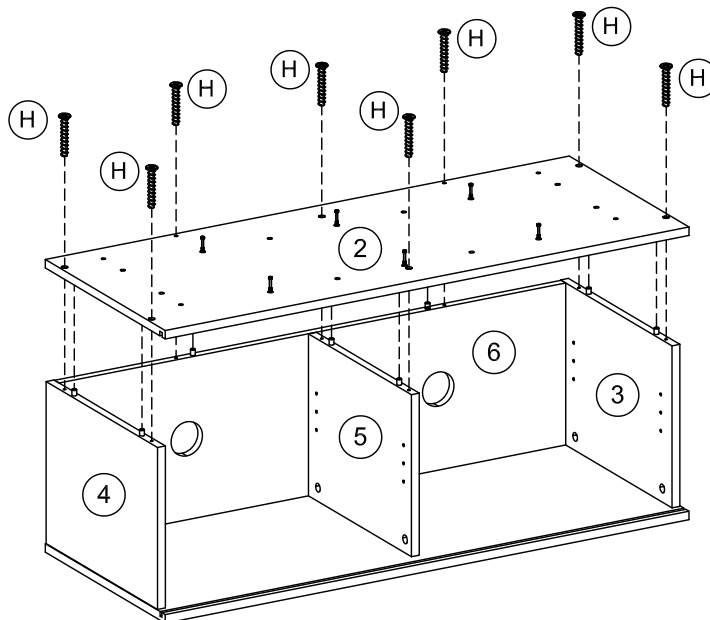
Attach the case assembly to top panel (1) as shown.
Turn the cam-lock (A) clockwise to lock using screwdriver, then paste cam-sticker (C).

Step 9:



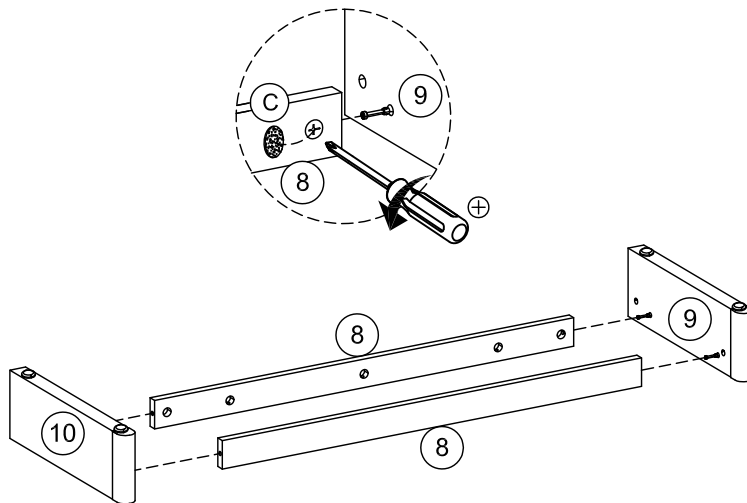
Attach divider panel (5) to the case assembly as shown.
Turn the cam-lock (A) clockwise to lock using screwdriver, then paste cam-sticker (C).

Step 10:



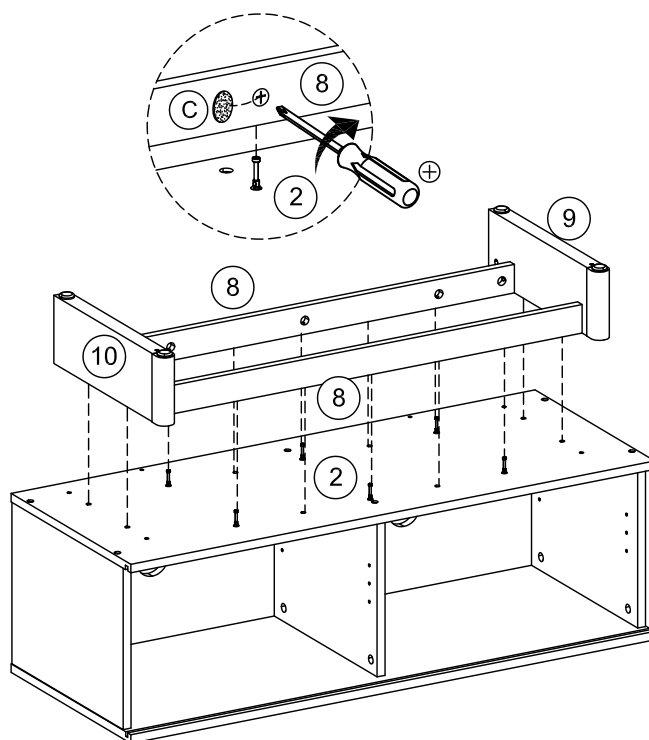
Attach base panel (2) to the case assembly using screws (H) as shown.

Step 11:



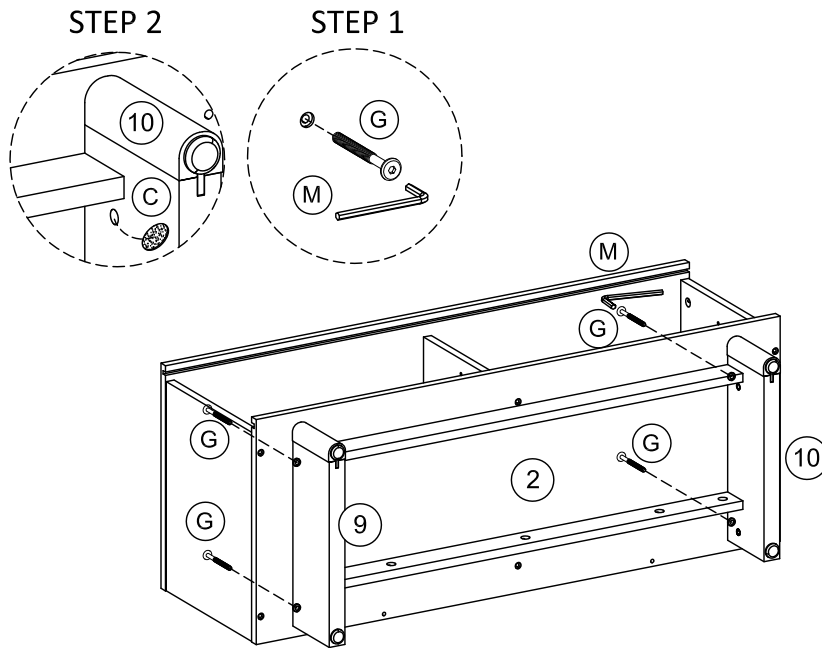
Attach left leg (9) and right leg (10) to bottom large support (8) as shown.
Turn the cam-lock (A) clockwise to lock using screwdriver, then paste cam-sticker (C).

Step 12:



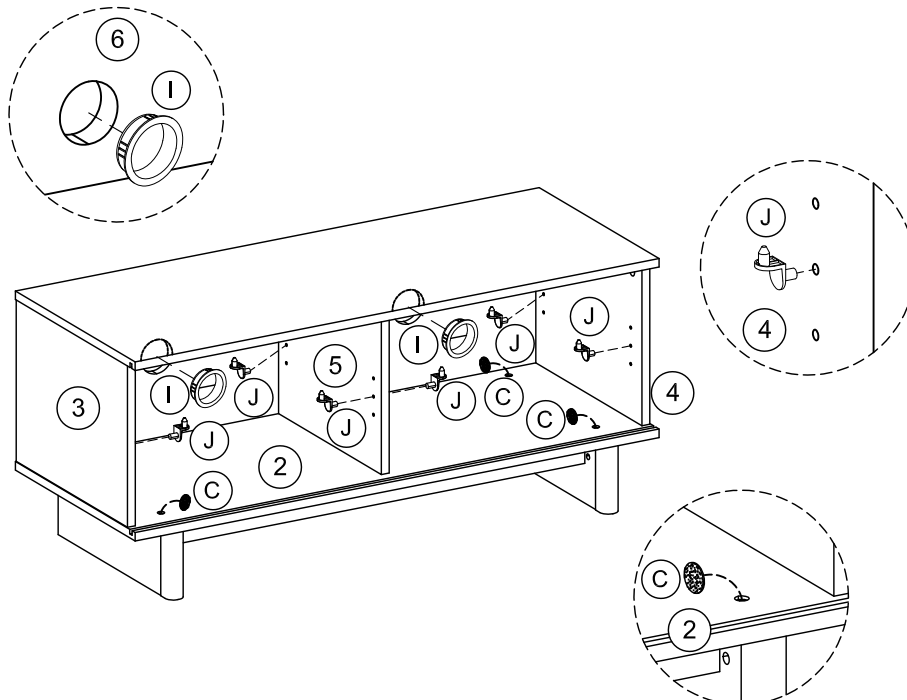
Attach assembly bottom support to base panel (2) as shown.
Turn the cam-lock (A) clockwise to lock using screwdriver, then paste cam-sticker (C).

Step 13:



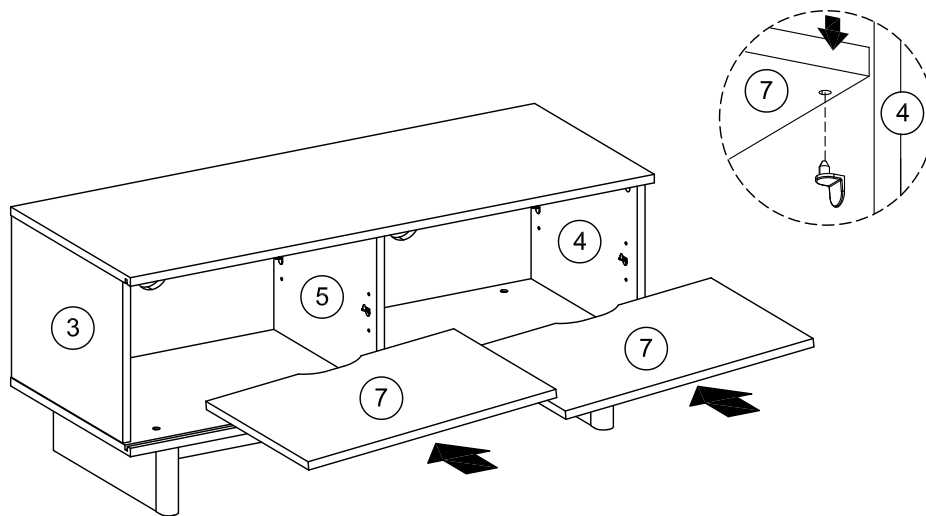
Tighten assembly bottom support with base panel (2) using screws (G) and allen key (M), then paste cam-sticker (C).

Step 14:



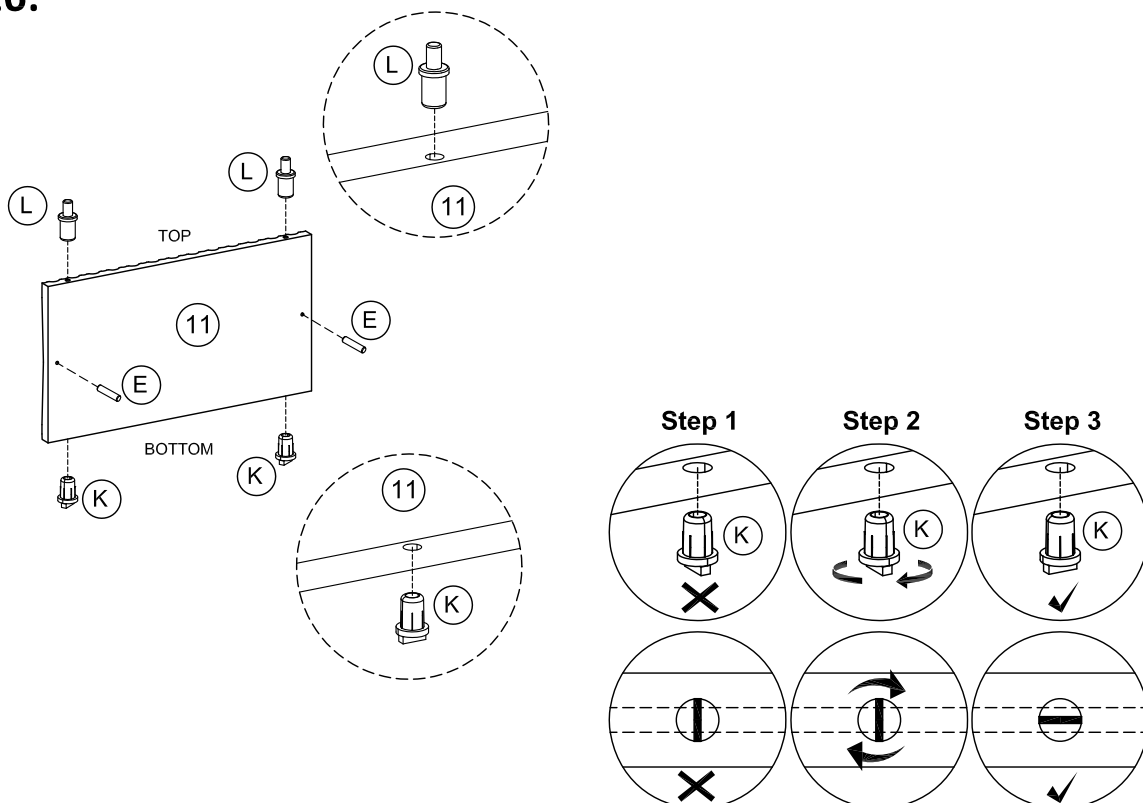
Insert cable holder (I) to rear panel (6) as shown.
Insert shelf support (J) to case assembly as shown.
Paste cam-sticker (C) to the base panel hole as shown.

Step 15:



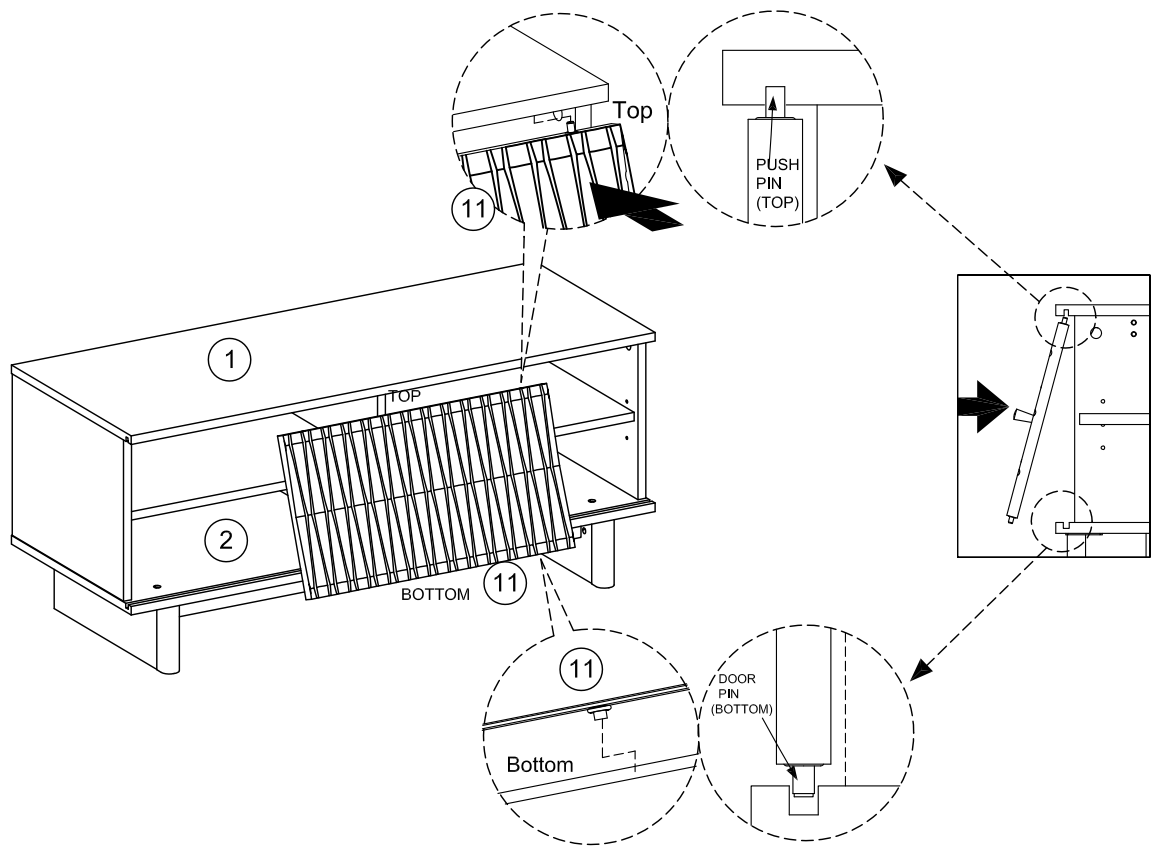
Insert adjustable shelf (7) into case assembly as shown.

Step 16:



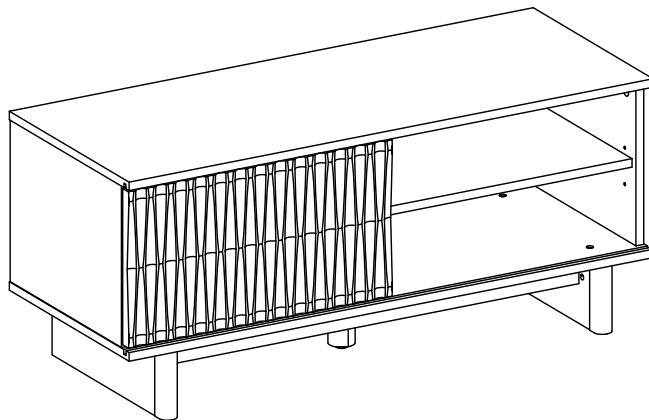
Insert push pin (L) into top of the door (11) and fix pin (K) into bottom of the door (11). insert door holder (E) into the door (11) as shown.

Step 17:



Attach the door into case assembly as shown.

Step 18:



Assembly is complete.

Care and Maintenance of your furniture

- Please periodically check all fittings and re-tighten as necessary.
- To clean your item, please use a damp cloth and wipe clean.
- Please do not drag or pull your furniture.
- Please do not place hot items (e.g. hot drinks) directly on to the wood surfaces.
- Never allow any kind of liquid to remain on your furniture. Absorption can cause wood to warp or finishes to de-laminate.