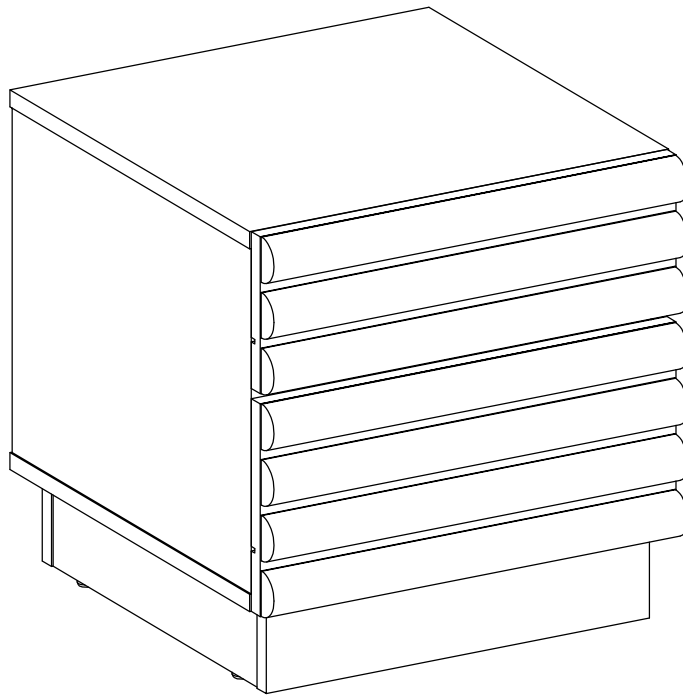


Dax 2 Drawer Bedside

INSTRUCTIONS



Thank You

Dear Customer

Check the pack and make sure you have all the parts listed below. If not, contact the helpline on 03451 656565 who will be able to help you.

Safety advice

IMPORTANT - The first step you need to take is to ensure your safety! Please take the time to read and understand these instructions before assembling your furniture.

Please keep these instructions for furniture reference.

Keep children and animals away from the assembly area. This furniture contains small parts that could cause choking if swallowed.

Keep all plastic wrapping materials away from babies and children to avoid danger of suffocation.

Ensure that all packaging is disposed of carefully and responsibly.

From time to time check that there are no loose fittings on the unit, re-tighten when necessary.

Two people may be required for the assembly of this product.

Once items are part or fully assembled, they are not returnable unless faulty.

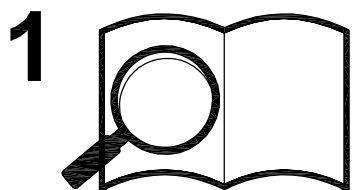
This item is not for outdoor use - unless stated otherwise.

Some items will be supplied with a wall fixing strap, which we recommend is used to secure the item to the wall, to prevent a child from accidentally pulling furniture over. Furniture can be dangerous if incorrectly installed. Assembly should be carried out by a competent person. No liability will be accepted for damage or injury caused by incorrectly installed or assembled furniture.

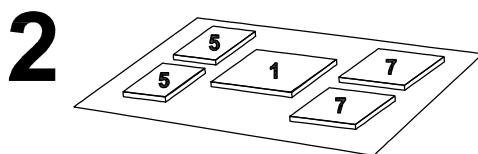
Top Tips Before You Start !

WARNING

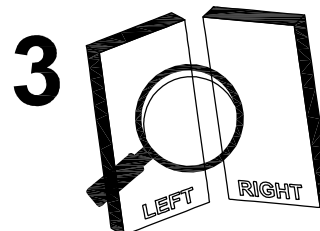
The Furniture is Exempt From Our Home Approval Policy Once Assembled.



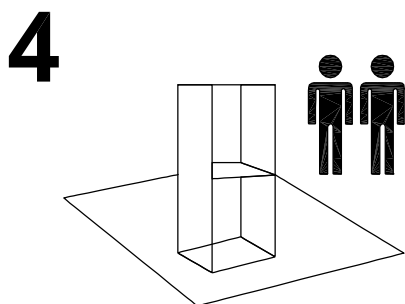
Read the Assembly Instruction carefully, check that all Parts and Hardwares are present !



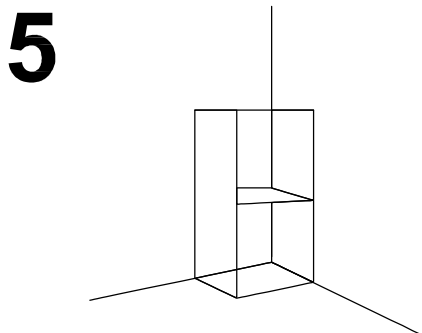
Layout all of the parts on a soft surface, and separate in groups for the same numbers to prevent any damage and easy identification. (Note: protected surface required for High Gloss Finished Items).



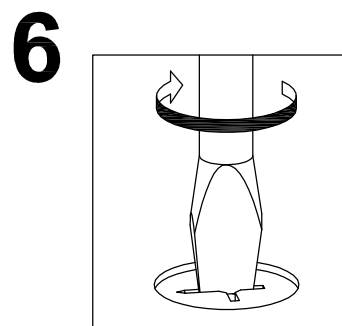
Carefully identify each parts required on that step, especially those that are similar. (e.g., Left-Right).



Please ensure you have sufficient space and people (as indicated in Page 1) to assemble the product safely.



Where possible, all items are assembled near to the area in which they will be place in use, to avoid moving the product unnecessary once assembled.



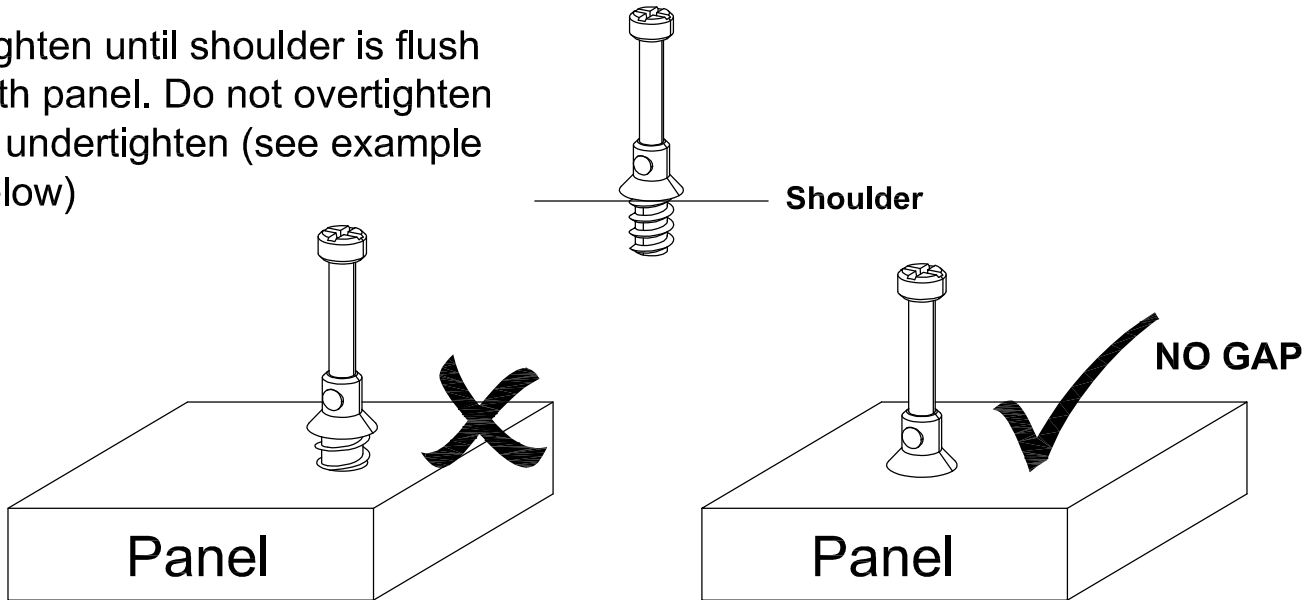
During assembly please take care not to over-tighten any fittings, as this may damage the product.

Note : For faster assembly strongly recommended to assemble sub-assembly part before the main body (e.g. drawer, hutch).

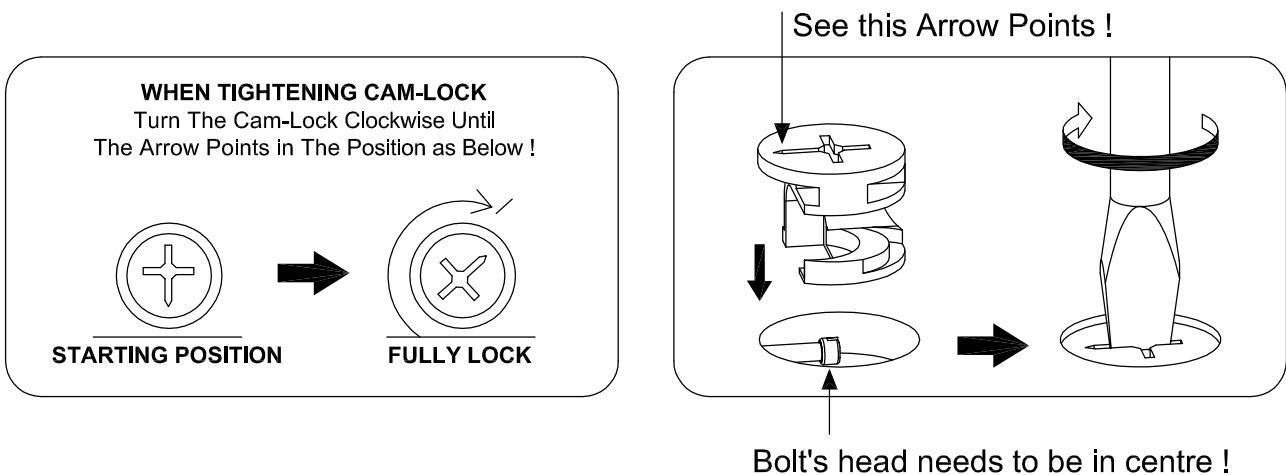
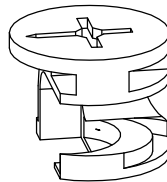
Special Tips for Fitting Minifix Cam (Cam-Lock), and Minifix Bolt (Cam-Bolts)

CAM-BOLT

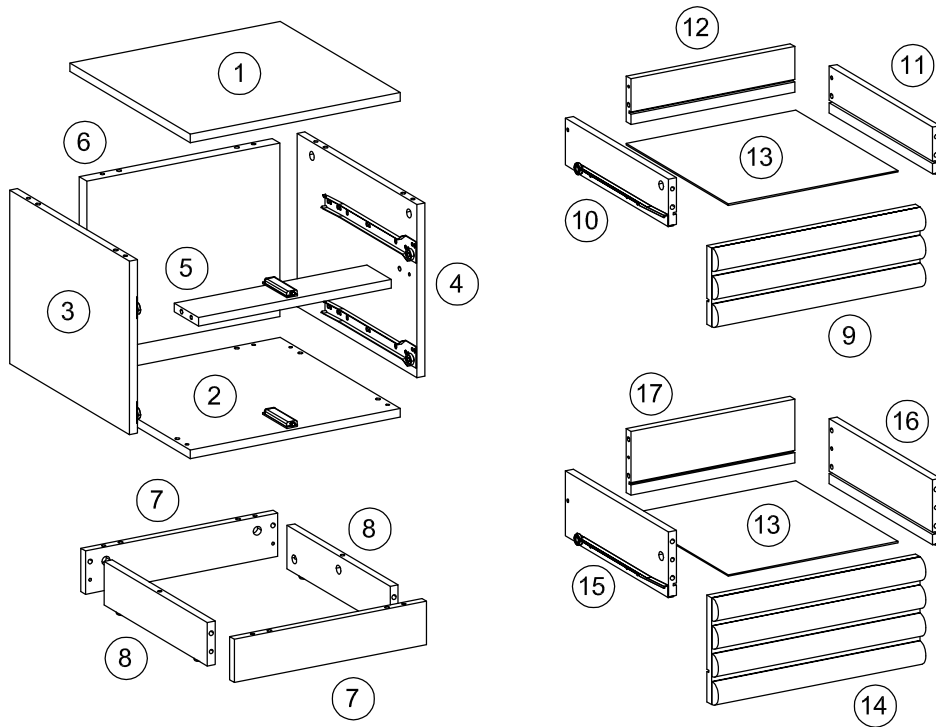
Tighten until shoulder is flush with panel. Do not overtighten or undertighten (see example below)



CAM-LOCK



Component Parts Supplied



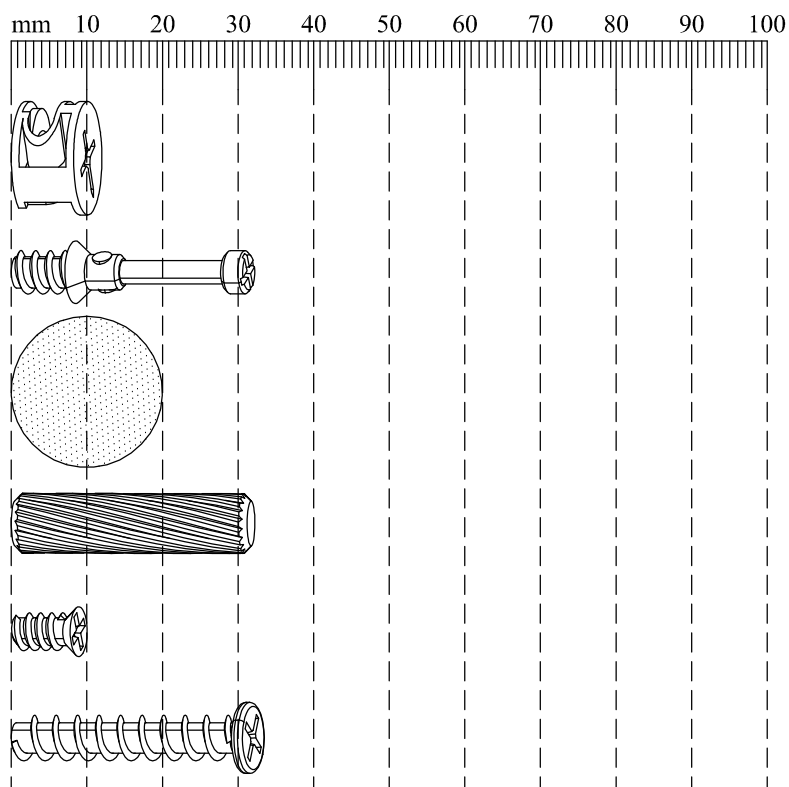
| Ref | Description | Dimensions | Qty |
|-----|---------------------------|-------------------------|-----|
| ① | Top panel | 400mm x 396mm x 15mm | 1 |
| ② | Base panel | 400mm x 396mm x 15mm | 1 |
| ③ | Left side panel | 304mm x 395mm x 15mm | 1 |
| ④ | Right side panel | 304mm x 395mm x 15mm | 1 |
| ⑤ | Drawer support | 367mm x 80mm x 15mm | 1 |
| ⑥ | Back panel | 304mm x 367mm x 30mm | 1 |
| ⑦ | Front/Rear bottom support | 366mm x 76mm x 15mm | 2 |
| ⑧ | Left/Right bottom support | 340mm x 76mm x 15mm | 2 |
| ⑨ | Top - front drawer | 397mm x 138mm x 36mm | 1 |
| ⑩ | Top - left drawer | 340mm x 82mm x 15mm | 1 |
| ⑪ | Top - right drawer | 340mm x 82mm x 15mm | 1 |
| ⑫ | Top - rear drawer | 312mm x 80mm x 15mm | 1 |
| ⑬ | Bottom drawer | 323mm x 336.5mm x 2.5mm | 2 |
| ⑭ | Bottom - front drawer | 397mm x 187mm x 36mm | 1 |
| ⑮ | Bottom - left drawer | 340mm x 114mm x 15mm | 1 |
| ⑯ | Bottom - right drawer | 340mm x 114mm x 15mm | 1 |
| ⑰ | Bottom - rear drawer | 312mm x 112mm x 15mm | 1 |

Parts and fittings



Fixtures and fittings supplied (actual size)

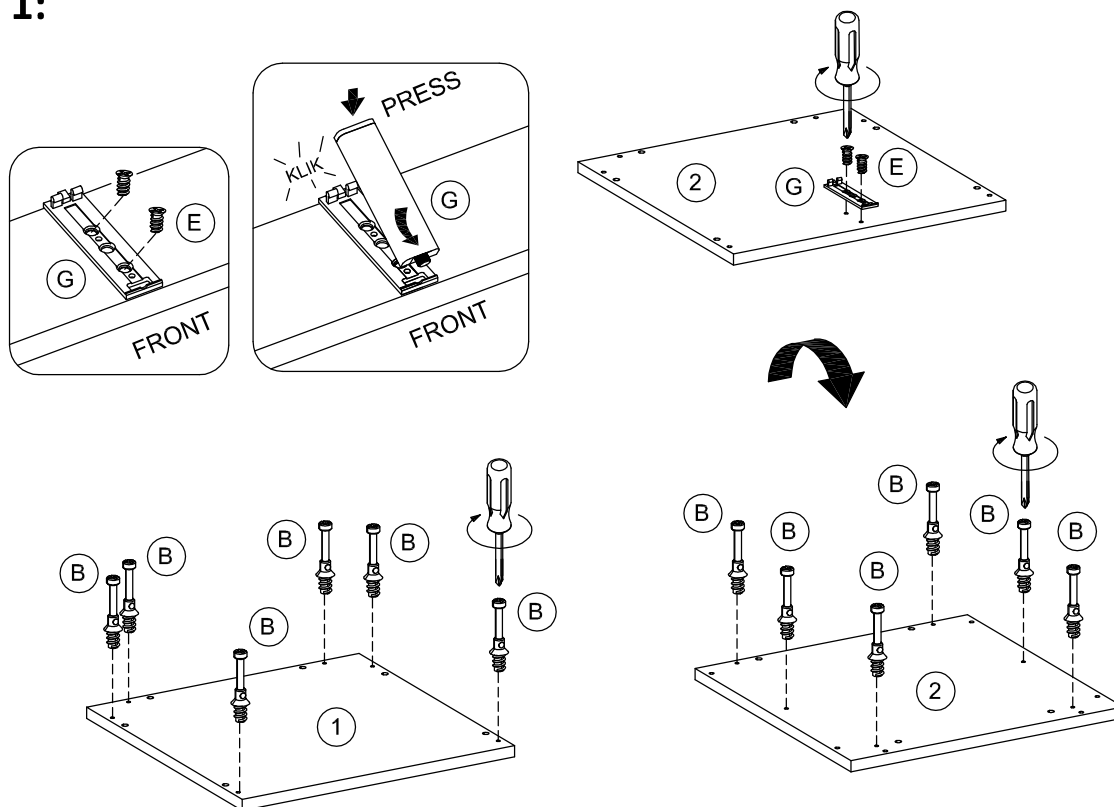
| Ref | Dimensions | Qty |
|-----|---------------|-----|
| Ⓐ | 15mm x 12mm | 22 |
| Ⓑ | 7.5mm x 32mm | 22 |
| Ⓒ | ∅20mm | 22 |
| Ⓓ | 8mm x 32mm | 34 |
| Ⓔ | 5mm x 10mm | 4 |
| Ⓕ | 10mm x 33.5mm | 10 |



Fixtures and fittings supplied (not to scale)

| Ref | Item | Visual | Qty |
|-----|------------|--------|-----|
| Ⓖ | Push latch | | 2 |

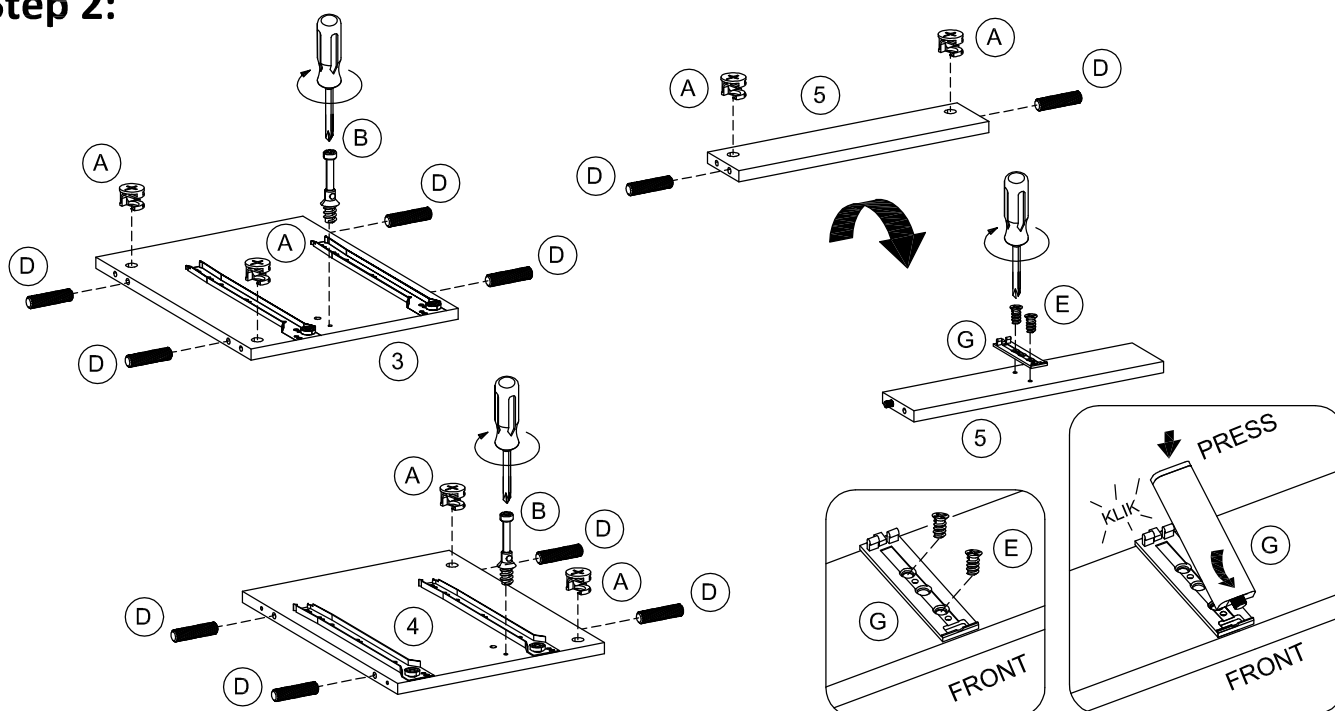
Step 1:



Attach cam-bolt (B) to top panel (1) using screwdriver.

Attach cam-bolt (B) to base panel (2) using screwdriver. Rotate 180° base panel, then attach push latch (G) with screws (E) using screwdriver.

Step 2:

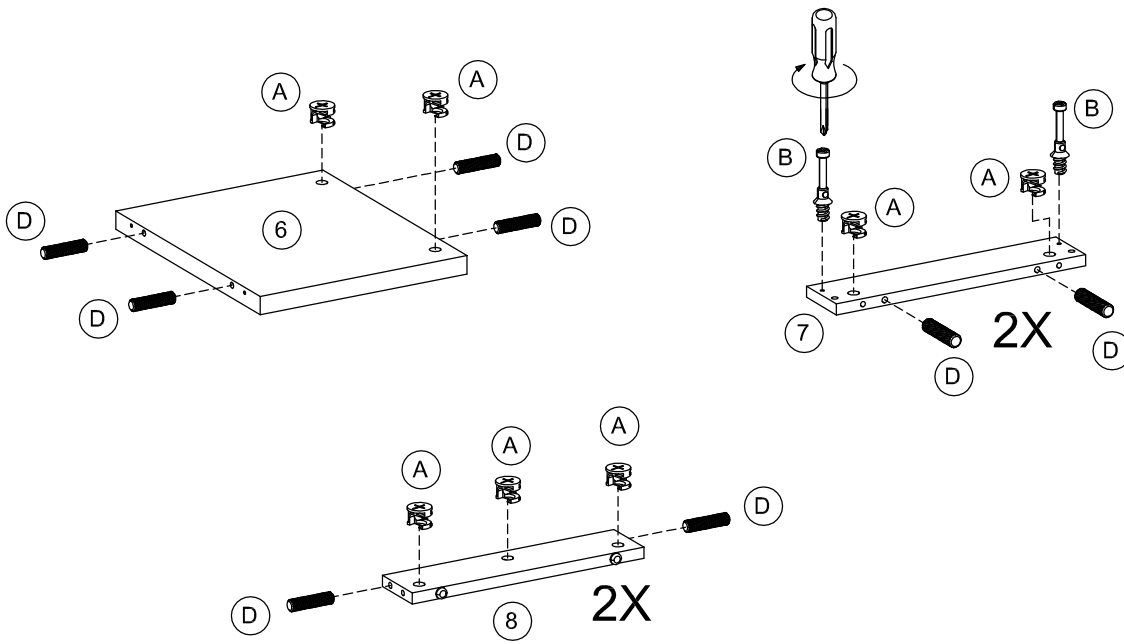


Attach cam-bolt (B) using screwdriver, then insert cam-lock (A) and dowel (D) to left side panel (3).

Attach cam-bolt (B) using screwdriver, then insert cam-lock (A) and dowel (D) to Right side panel (4).

Insert cam-lock (A) and dowel (D) to drawer support (5). Rotate 180° drawer support, then attach push latch (G) with screws (E) using screwdriver.

Step 3:

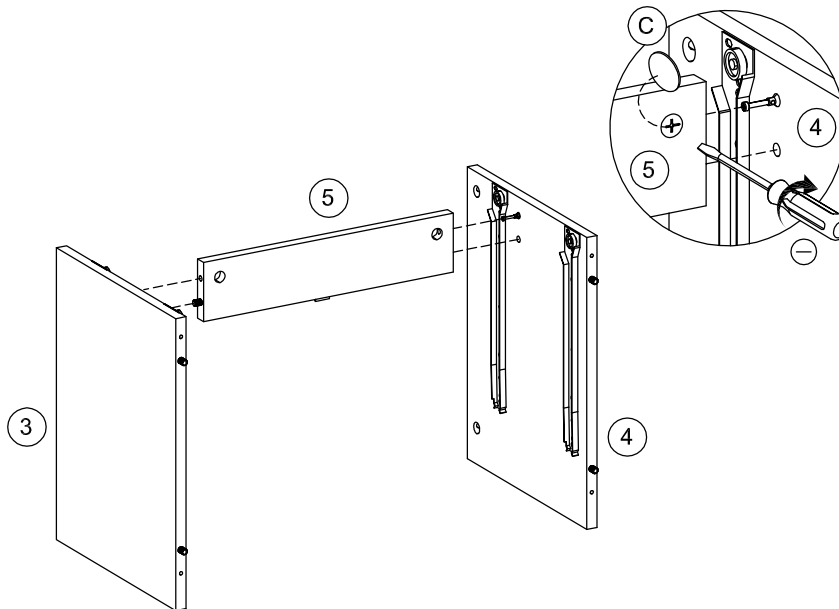


Insert cam-lock (A) and dowel (D) to back panel (6).

Attach cam-bolt (B) using screwdriver, then insert cam-lock (A) and dowel (D) to front/rear bottom support (7).

Insert cam-lock (A) and dowel (D) to left/right bottom support (8).

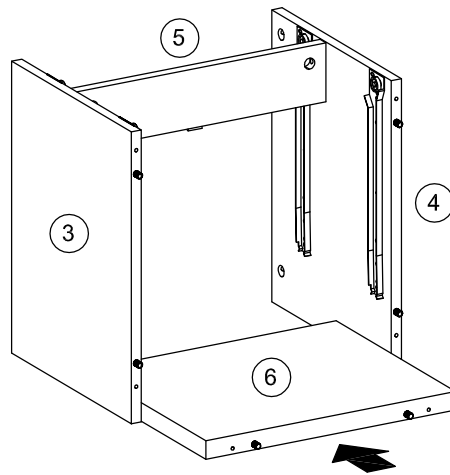
Step 4:



Attach left side panel (3) and right side panel (4) to drawer support (5) as shown.

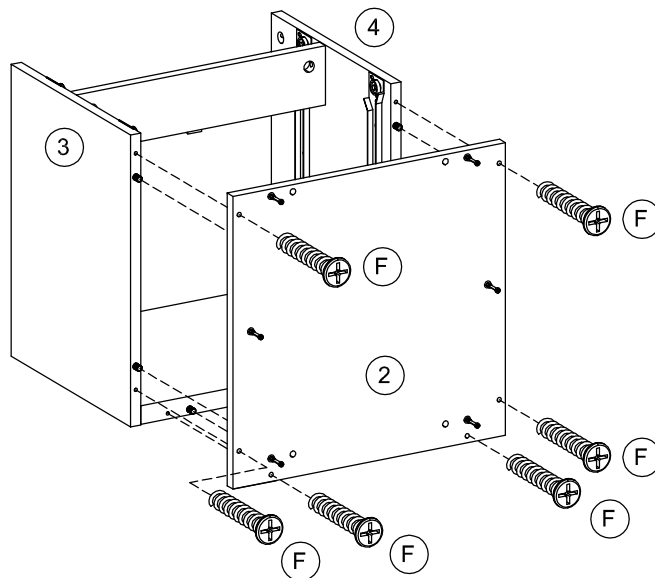
Turn the cam-lock (A) clockwise to lock using screwdriver, then paste cam-sticker (C).

Step 5:



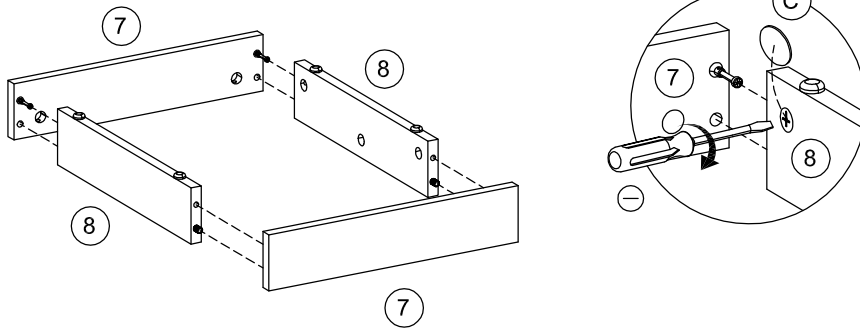
Put the back panel (6) between left side panel (3) and right side panel (4) as shown.

Step 6:



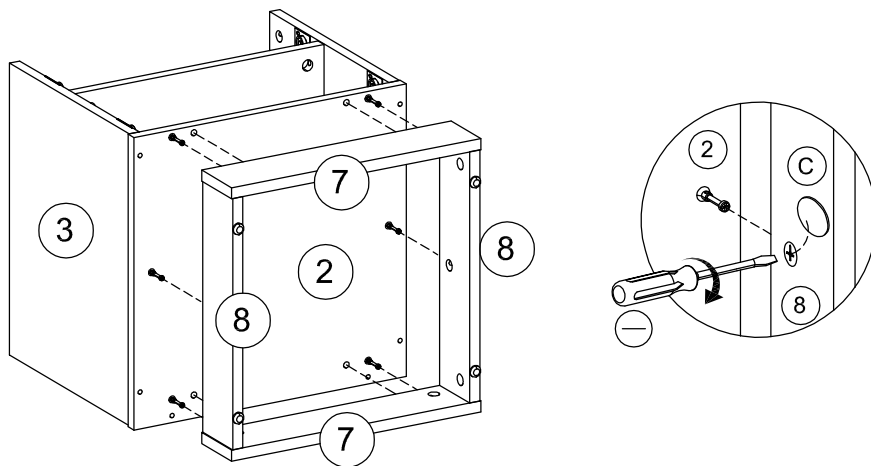
Attach base panel (2) to case assembly using screws (F).

Step 7:



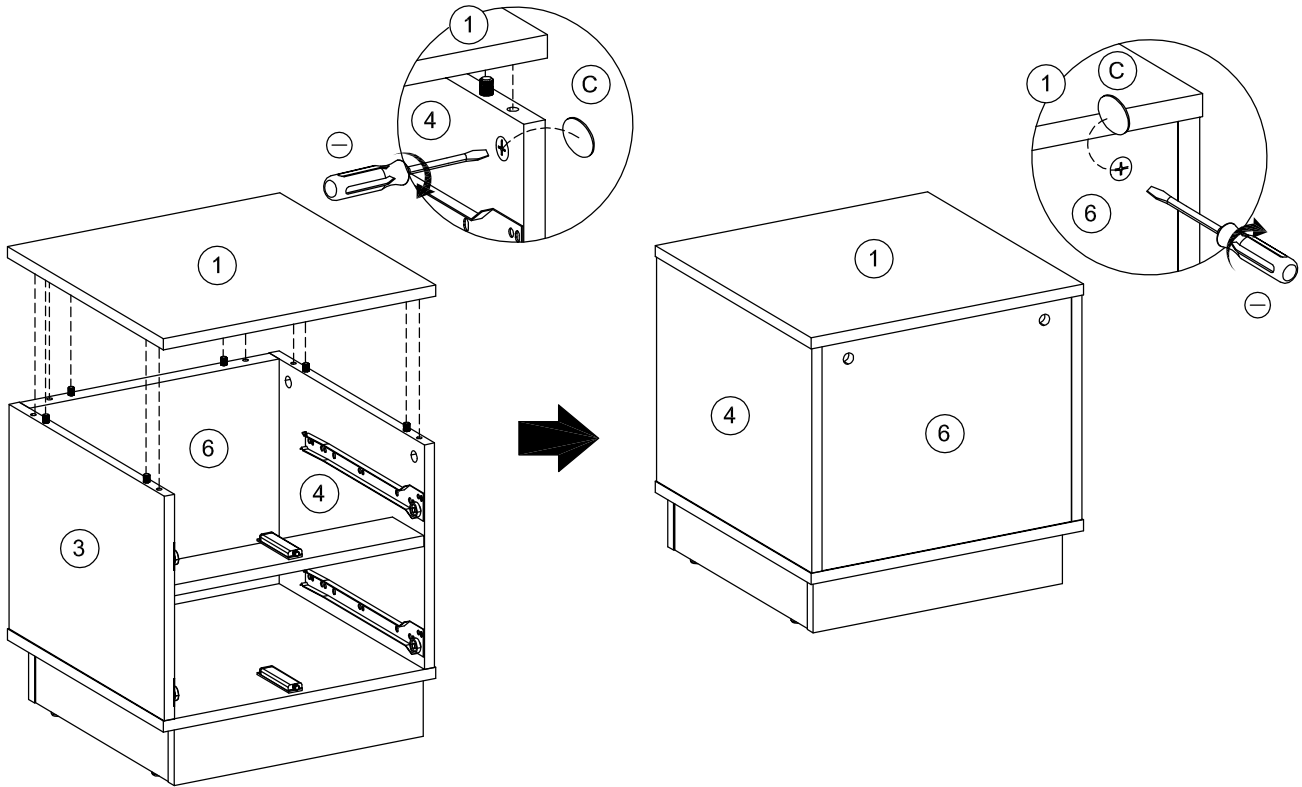
Attach front/rear bottom support (7) to left/right bottom support (8) as shown.
Turn the cam-lock (A) clockwise to lock using screwdriver, then paste cam-sticker (C).

Step 8:



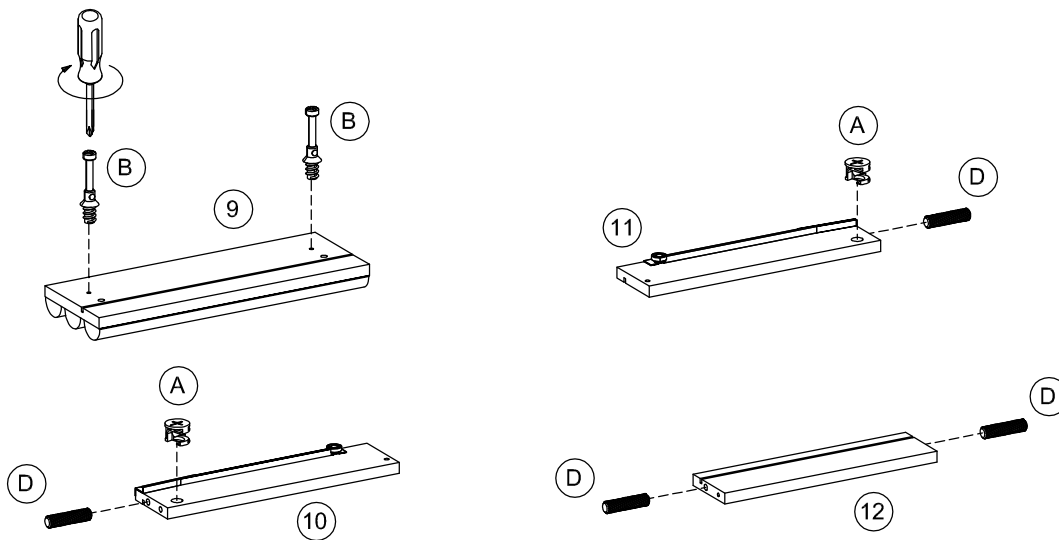
Attach bottom support assembly to case assembly as shown.
Turn the cam-lock (A) clockwise to lock using screwdriver, then paste cam-sticker (C).

Step 9:



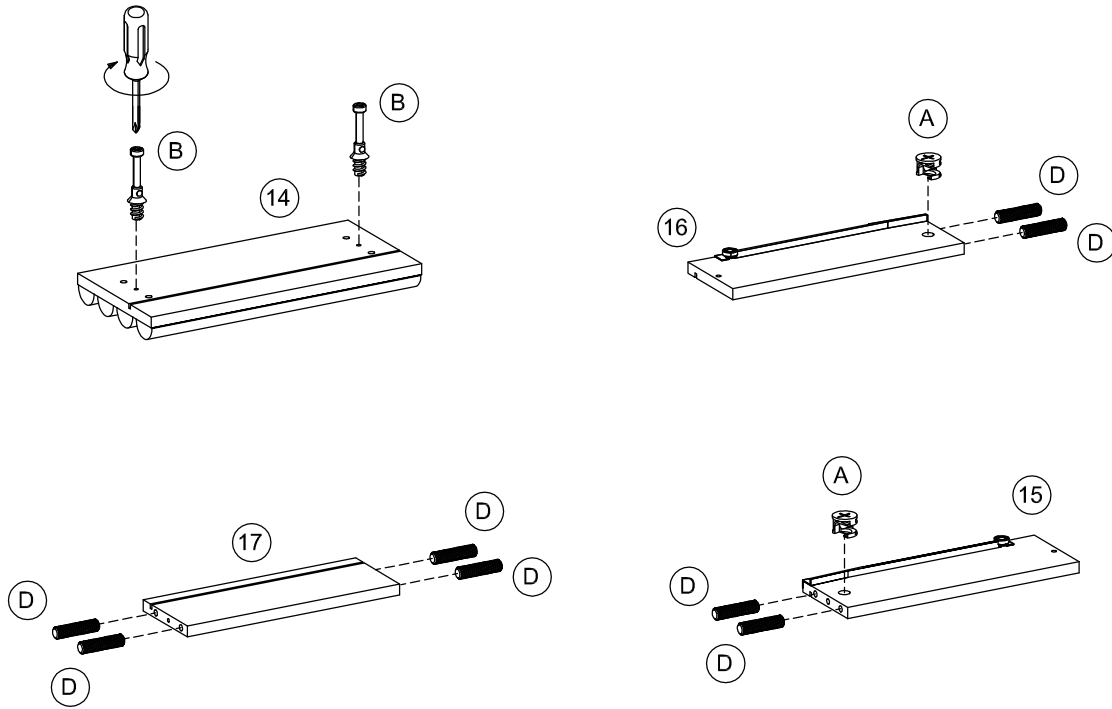
Attach top panel (1) to case assembly as shown.
Turn the cam-lock (A) clockwise to lock using screwdriver, then paste cam-sticker (C).

Step 10:



Attach cam-bolt (B) to top - front drawer (9) using screwdriver.
Insert cam-lock (A) and dowel (D) to top - left drawer (10), top - right drawer (11) and top - rear drawer (12).

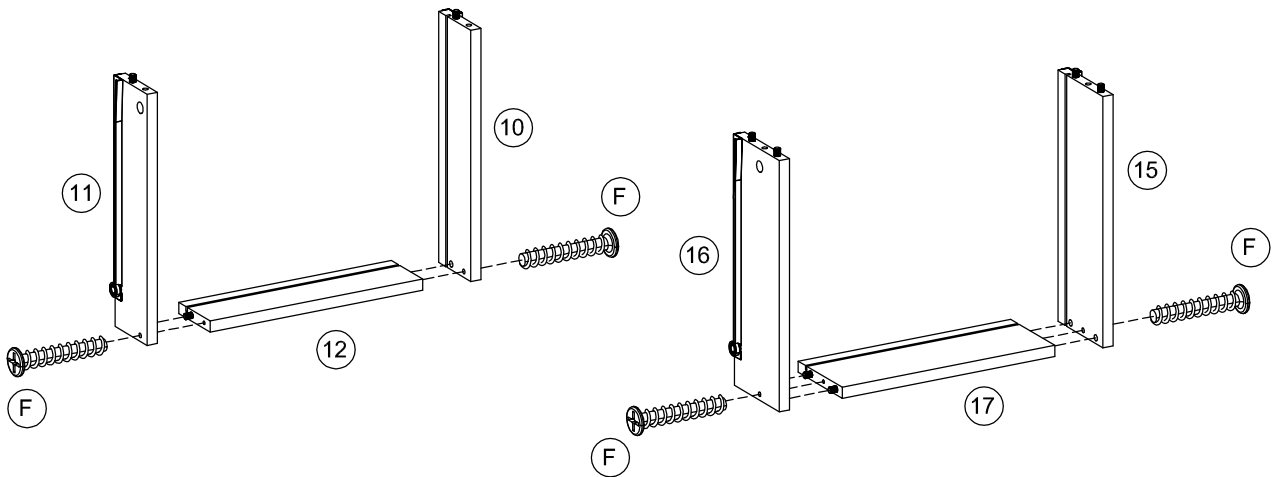
Step 11:



Attach cam-bolt (B) to bottom - front drawer (14) using screwdriver.

Insert cam-lock (A) and dowel (D) to bottom - left drawer (15), bottom - right drawer (16) and bottom - rear drawer (17).

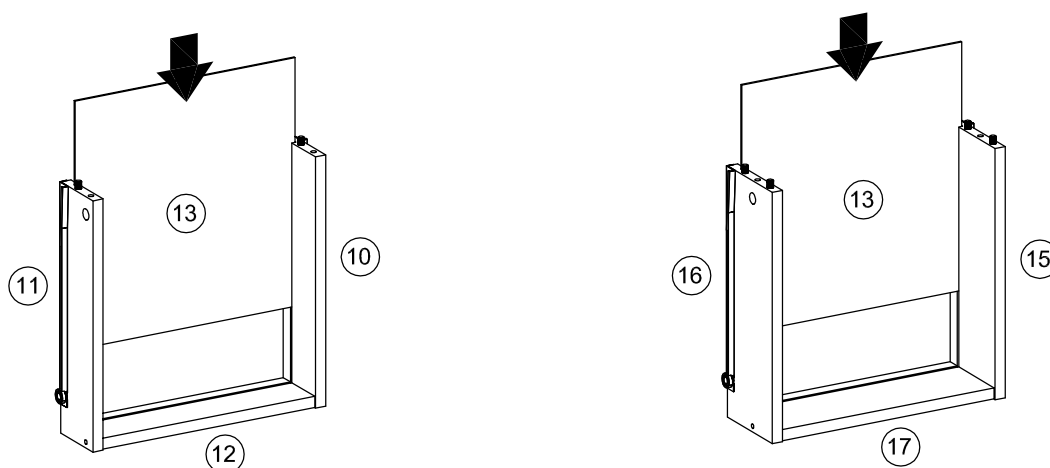
Step 12:



Attach top - left drawer (10) and top - right drawer (11) to top - rear drawer (12) using screws (F) as shown.

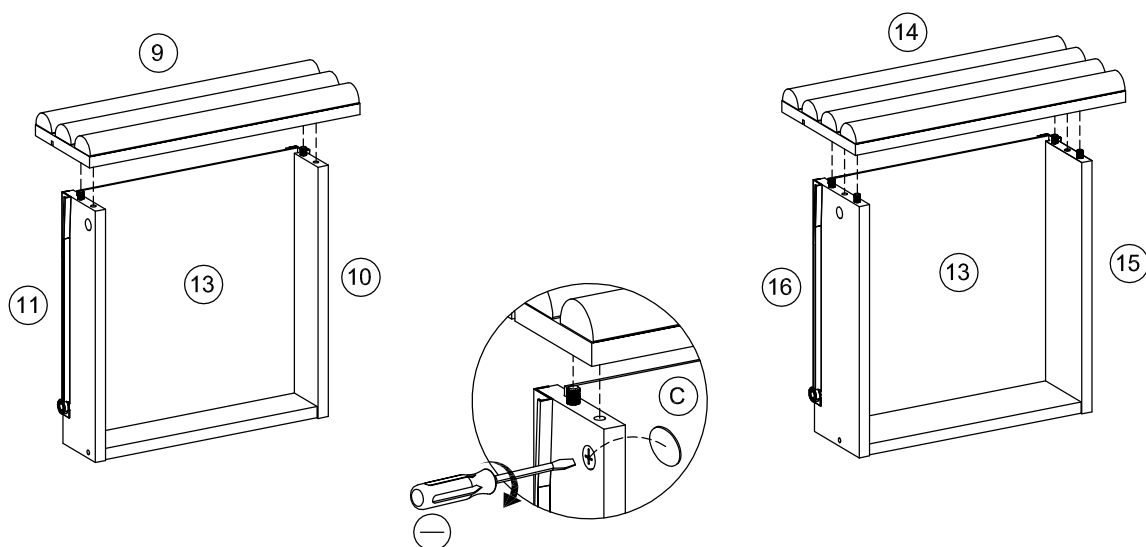
Attach bottom - left drawer (15) and bottom - right drawer (16) to bottom - rear drawer (17) using screws (F) as shown.

Step 13:



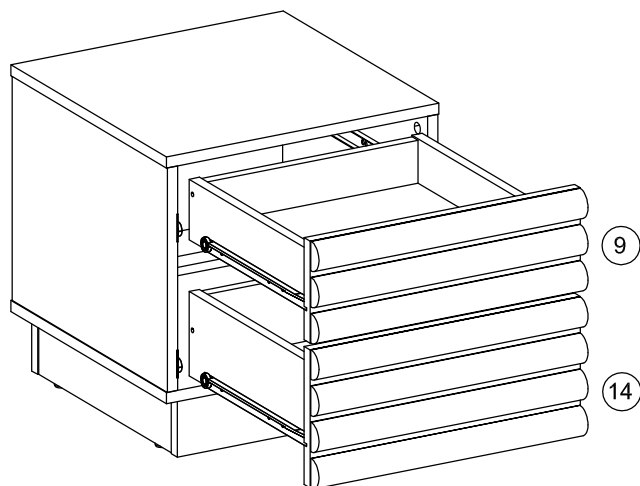
Insert bottom drawer (13) into assembly drawer as shown.

Step 14:



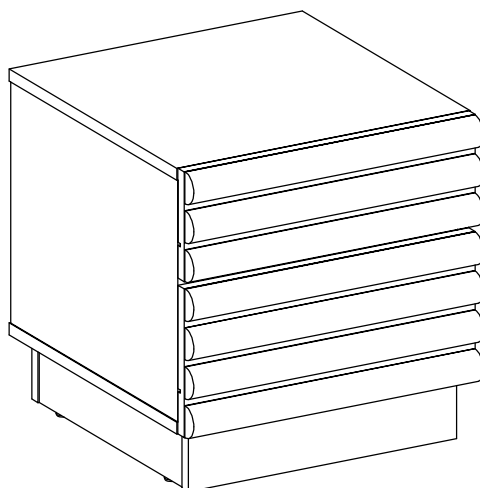
Attach top - front drawer (9) and Bottom - front drawer (14) to assembly drawer as shown. Turn the cam-lock (A) clockwise to lock using screwdriver, then paste cam-sticker (C).

Step 15:

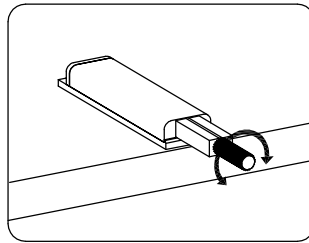
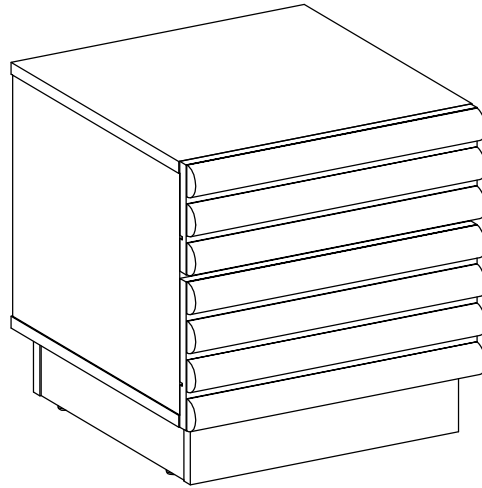


Insert drawer (9) and drawer (14) into case assembly as shown.

Step 16:



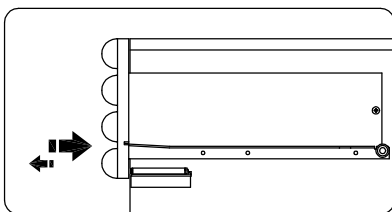
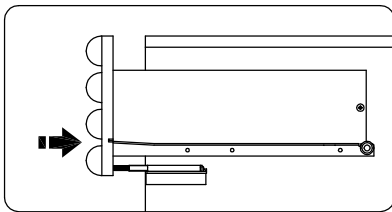
Assembly is complete.



To adjust the drawer gap to the cabinet body, please turn the pin on push latch system

CLOSE DRAWERS

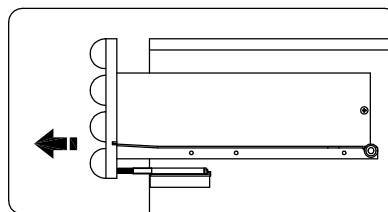
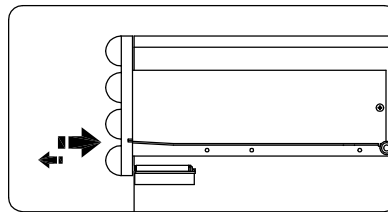
Push the drawers towards you



If the drawer feels like it has stopped releasing your hand pressure slowly

OPEN DRAWERS

Press gently in front of you then release your hand quickly



The drawer will open slightly to allow your finger to slide in to open

Care and Maintenance of your furniture

- Please periodically check all fittings and re-tighten as necessary.
- To clean your item, please use a damp cloth and wipe clean.
- Please do not drag or pull your furniture.
- Please do not place hot items (e.g. hot drinks) directly on to the wood surfaces.
- Never allow any kind of liquid to remain on your furniture. Absorption can cause wood to warp or finishes to de-laminate.