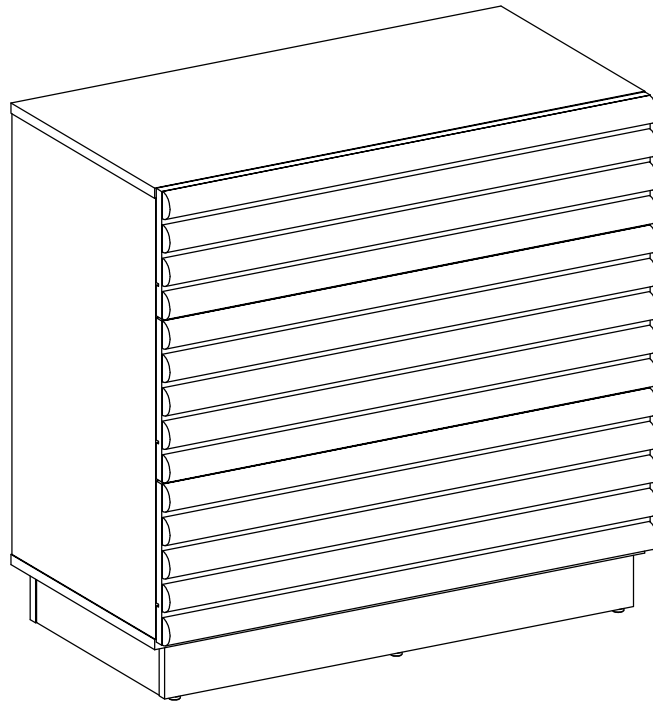


Dax 3 Drawer Chest

INSTRUCTIONS



Thank You

Dear Customer

Check the pack and make sure you have all the parts listed below. If not, contact the helpline on 03451 656565 who will be able to help you.

Safety advice

IMPORTANT - The first step you need to take is to ensure your safety! Please take the time to read and understand these instructions before assembling your furniture.

Please keep these instructions for furniture reference.

Keep children and animals away from the assembly area. This furniture contains small parts that could cause choking if swallowed.

Keep all plastic wrapping materials away from babies and children to avoid danger of suffocation.

Ensure that all packaging is disposed of carefully and responsibly.

From time to time check that there are no loose fittings on the unit, re-tighten when necessary.

Two people may be required for the assembly of this product.

Once items are part or fully assembled, they are not returnable unless faulty.

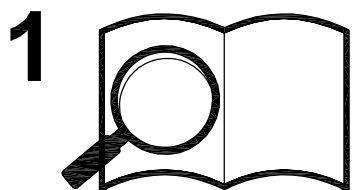
This item is not for outdoor use - unless stated otherwise.

Some items will be supplied with a wall fixing strap, which we recommend is used to secure the item to the wall, to prevent a child from accidentally pulling furniture over. Furniture can be dangerous if incorrectly installed. Assembly should be carried out by a competent person. No liability will be accepted for damage or injury caused by incorrectly installed or assembled furniture.

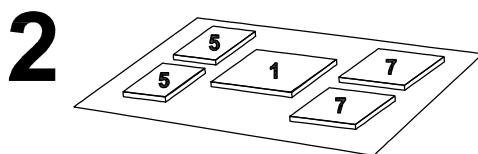
Top Tips Before You Start !

WARNING

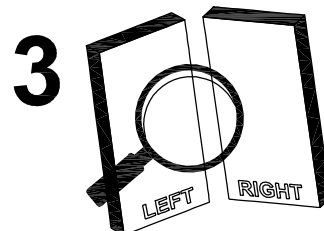
The Furniture is Exempt From Our Home Approval Policy Once Assembled.



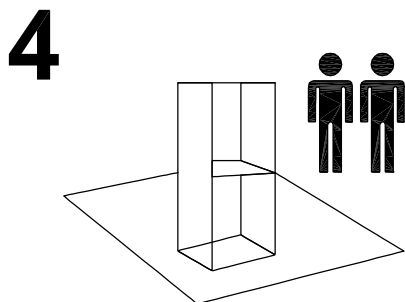
Read the Assembly Instruction carefully, check that all Parts and Hardwares are present !



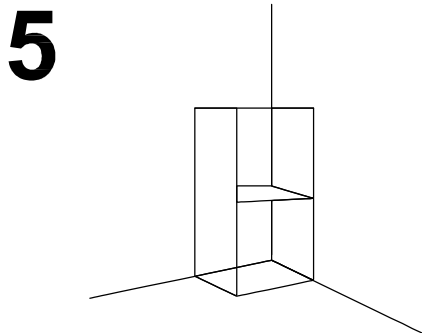
Layout all of the parts on a soft surface, and separate in groups for the same numbers to prevent any damage and easy identification. (Note: protected surface required for High Gloss Finished Items).



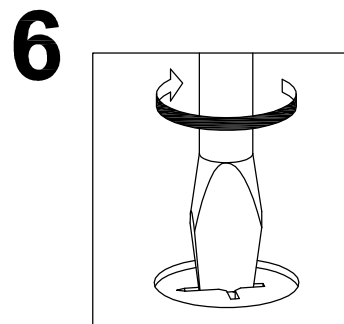
Carefully identify each parts required on that step, especially those that are similar. (e.g., Left-Right).



Please ensure you have sufficient space and people (as indicated in Page 1) to assemble the product safely.



Where possible, all items are assembled near to the area in which they will be place in use, to avoid moving the product unnecessary once assembled.



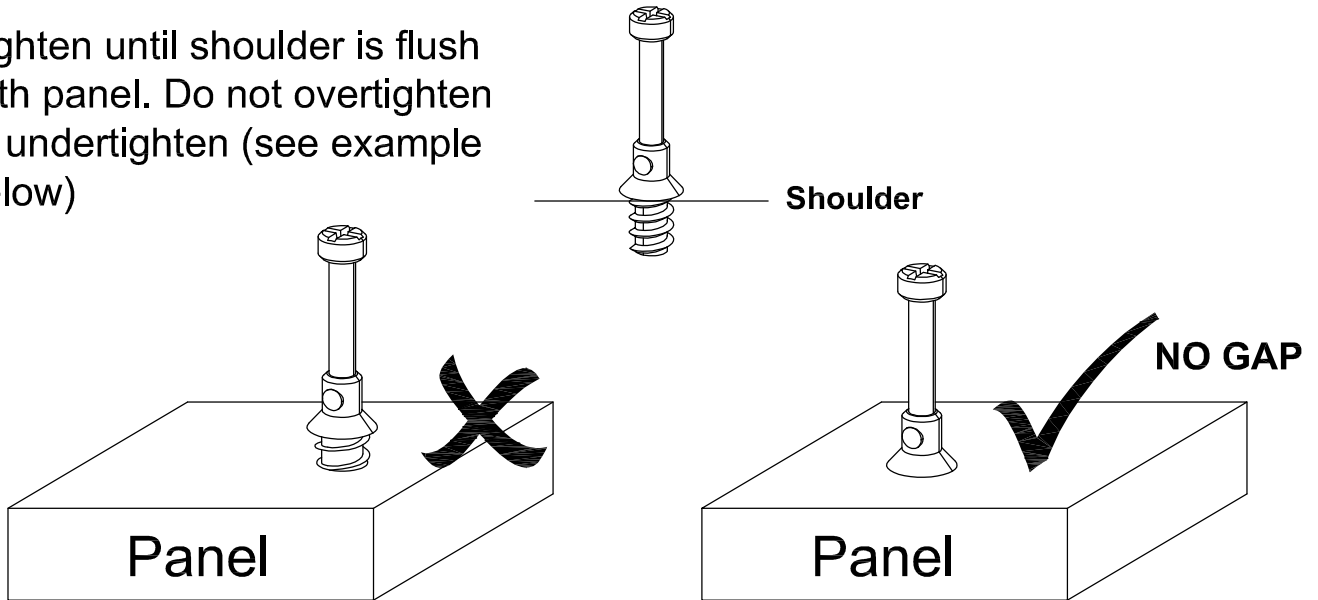
During assembly please take care not to over-tighten any fittings, as this may damage the product.

Note : For faster assembly strongly recommended to assemble sub-assembly part before the main body (e.g. drawer, hutch).

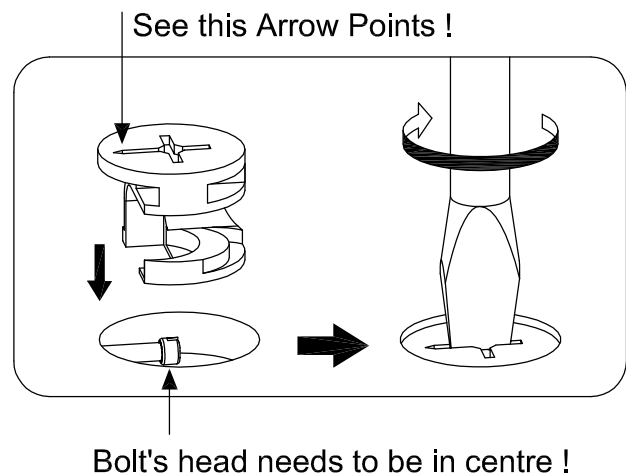
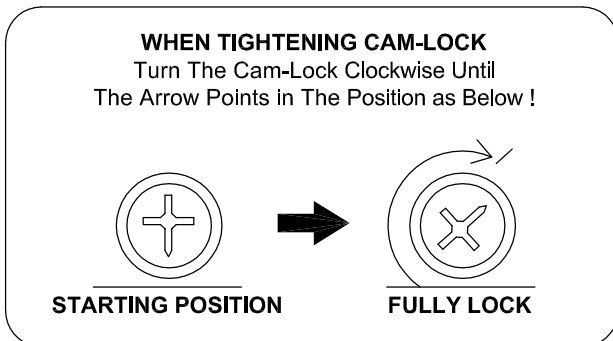
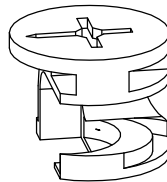
Special Tips for Fitting Minifix Cam (Cam-Lock), and Minifix Bolt (Cam-Bolts)

CAM-BOLT

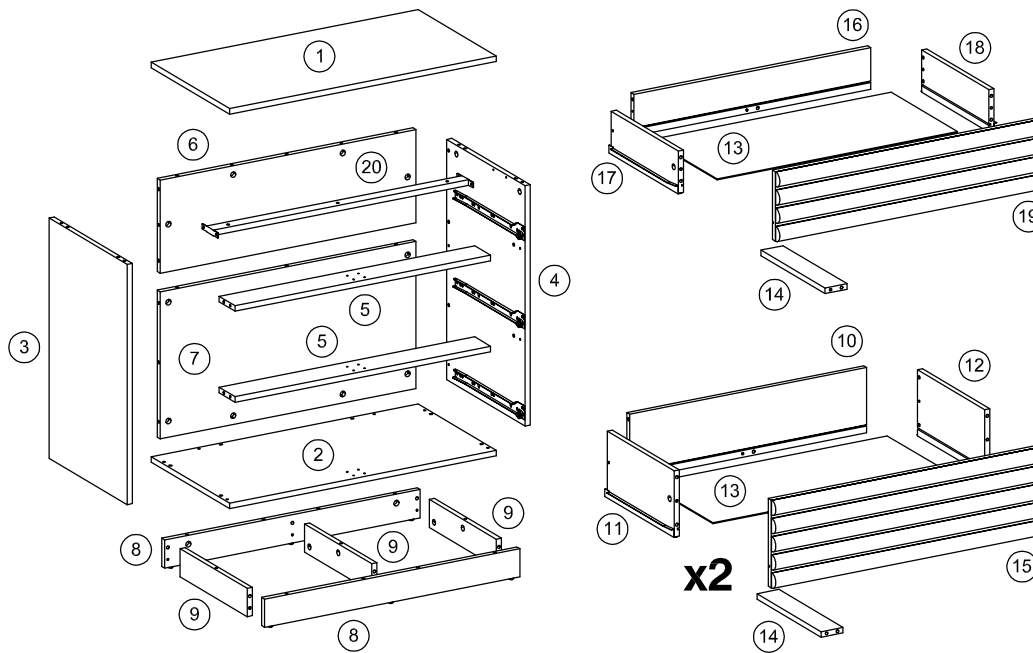
Tighten until shoulder is flush with panel. Do not overtighten or undertighten (see example below)



CAM-LOCK



Component Parts Supplied

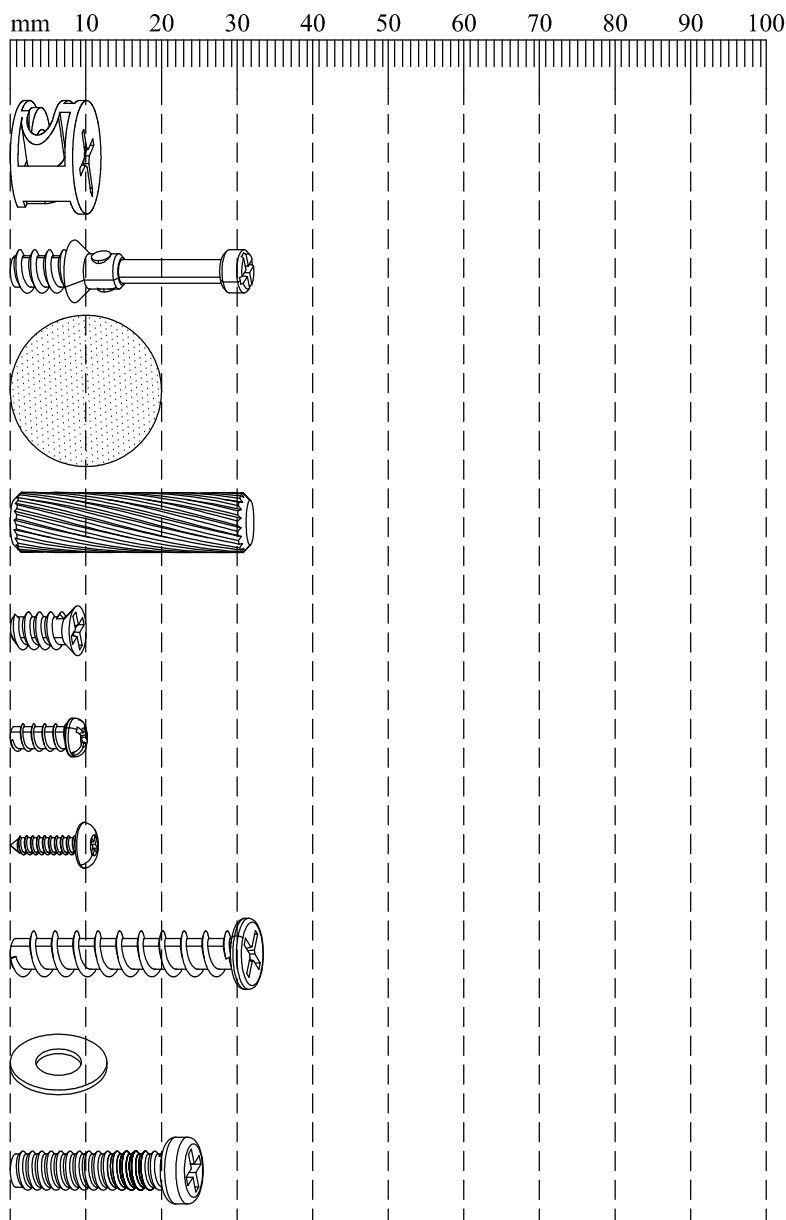


| Ref | Description | Dimensions | Qty |
|-----|---------------------------|-----------------------|-----|
| ① | Top panel | 780mm x 396mm x 15mm | 1 |
| ② | Base panel | 780mm x 396mm x 15mm | 1 |
| ③ | Left side panel | 647mm x 395mm x 15mm | 1 |
| ④ | Right side panel | 647mm x 395mm x 15mm | 1 |
| ⑤ | Drawer support | 747mm x 80mm x 15mm | 2 |
| ⑥ | Top back panel | 747mm x 251mm x 15mm | 1 |
| ⑦ | Bottom back panel | 747mm x 396mm x 15mm | 1 |
| ⑧ | Front/Rear Bottom support | 746mm x 76mm x 15mm | 2 |
| ⑨ | Middle bottom support | 340mm x 76mm x 15mm | 3 |
| ⑩ | Bottom - rear drawer | 691mm x 176mm x 15mm | 2 |
| ⑪ | Bottom - left drawer | 340mm x 178mm x 15mm | 2 |
| ⑫ | Bottom - right drawer | 340mm x 178mm x 15mm | 2 |
| ⑬ | Bottom drawer | 702mm x 336mm x 2.5mm | 3 |
| ⑭ | Bottom support drawer | 324mm x 64mm x 15mm | 3 |
| ⑮ | Bottom - front drawer | 777mm x 236mm x 36mm | 2 |
| ⑯ | Top - rear drawer | 691mm x 112mm x 15mm | 1 |
| ⑰ | Top - left drawer | 340mm x 114mm x 15mm | 1 |
| ⑱ | Top - right drawer | 340mm x 114mm x 15mm | 1 |
| ⑲ | Top - front drawer | 777mm x 187mm x 36mm | 1 |
| ⑳ | Metal support | 746mm x 80mm x 15mm | 1 |

Parts and fittings

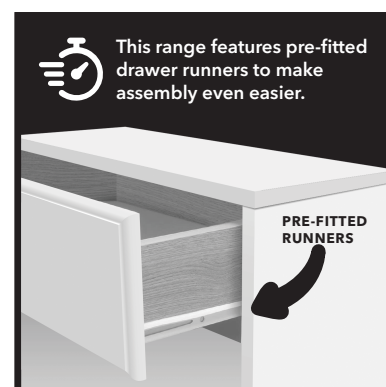
Fixtures and fittings supplied (actual size)

| Ref | Dimensions | Qty |
|-----|---------------|-----|
| Ⓐ | 15mm x 12mm | 40 |
| Ⓑ | 7.5mm x 32mm | 40 |
| Ⓒ | ∅20mm | 40 |
| Ⓓ | 8mm x 32mm | 67 |
| Ⓔ | 5mm x 10mm | 12 |
| Ⓕ | 4mm x 10mm | 4 |
| Ⓖ | 3mm x 12mm | 4 |
| Ⓗ | 10mm x 33.5mm | 13 |
| Ⓘ | ∅13mm | 3 |
| Ⓙ | 6mm x 25mm | 3 |

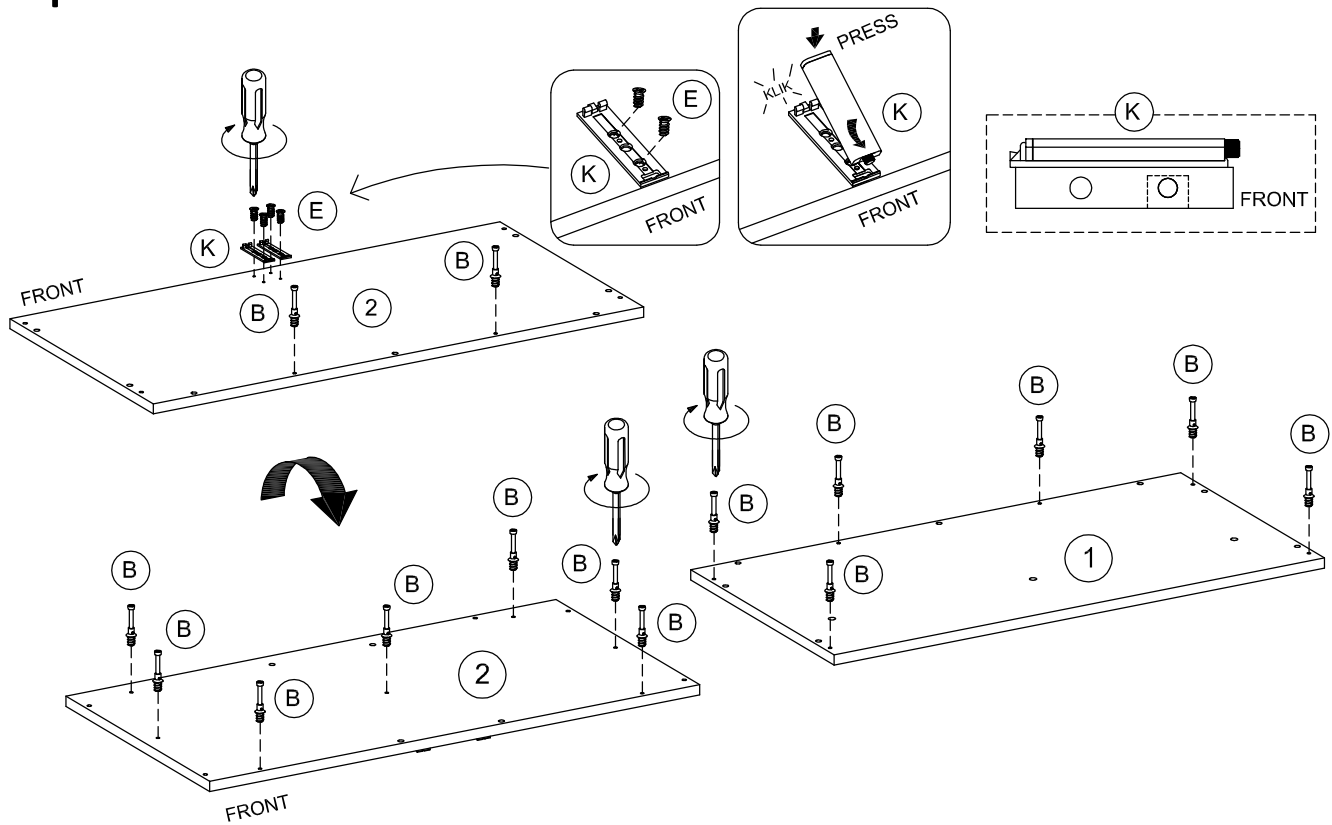


Fixtures and fittings supplied (not to scale)

| Ref | Item | Visual | Qty |
|-----|------------------|--------|-----|
| Ⓚ | Push latch | | 6 |
| Ⓛ | Cable tie mounts | | 4 |
| Ⓜ | Cable tie | | 2 |

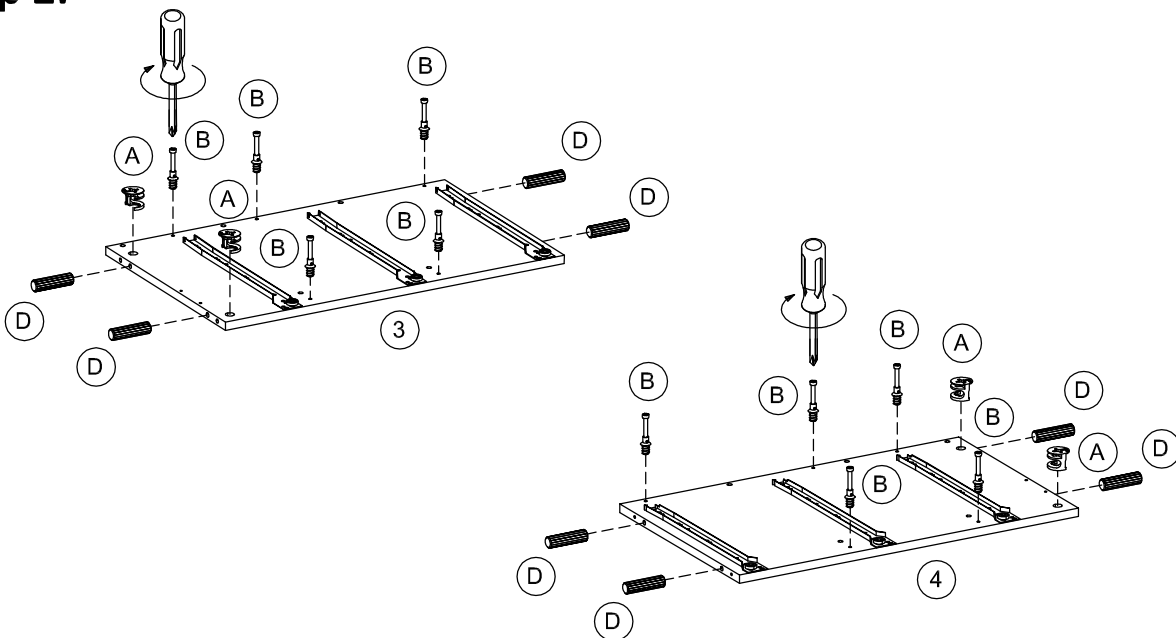


Step 1:



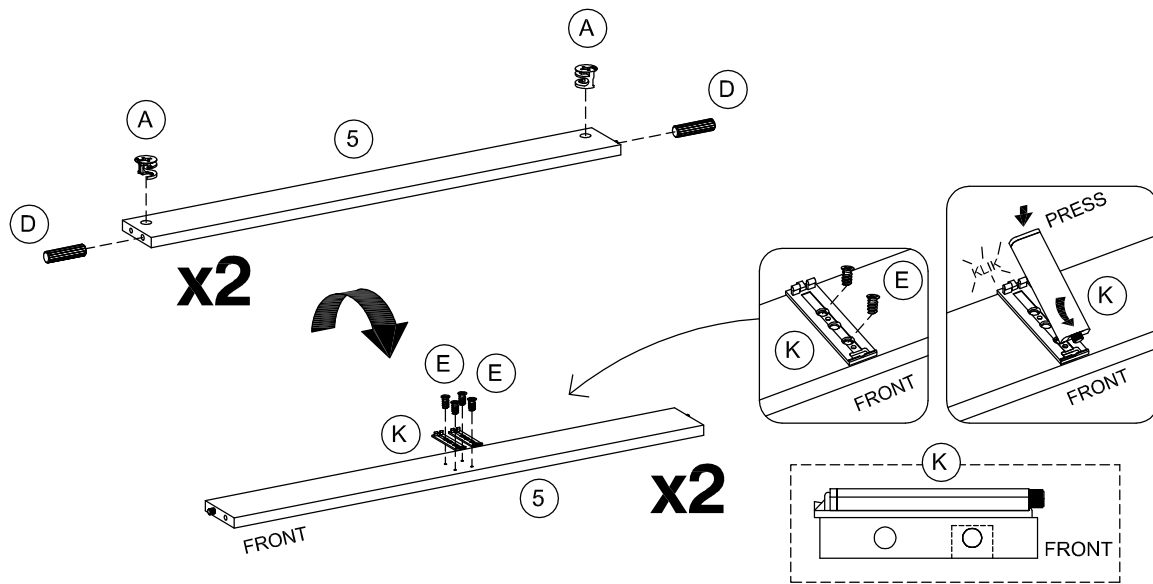
Attach cam-bolt (B) to top panel (1) and base panel (2) using screwdriver.
Rotate 180° base panel (2), then attach cam-bolt (B) using screwdriver and attach push latch (K) using screws (E).

Step 2:



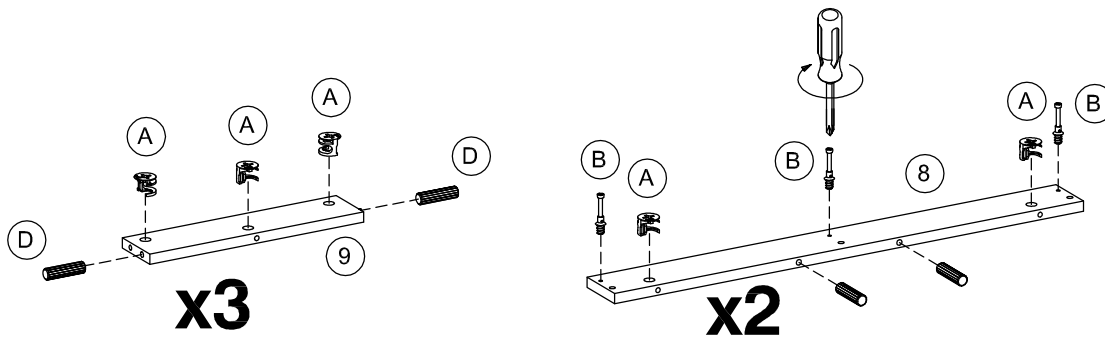
Attach cam-bolt (B) to left side panel (3) and right side panel (4) using screwdriver.
Insert cam-lock (A) and dowel (D) into left side panel (3) and right side panel (4).

Step 3:



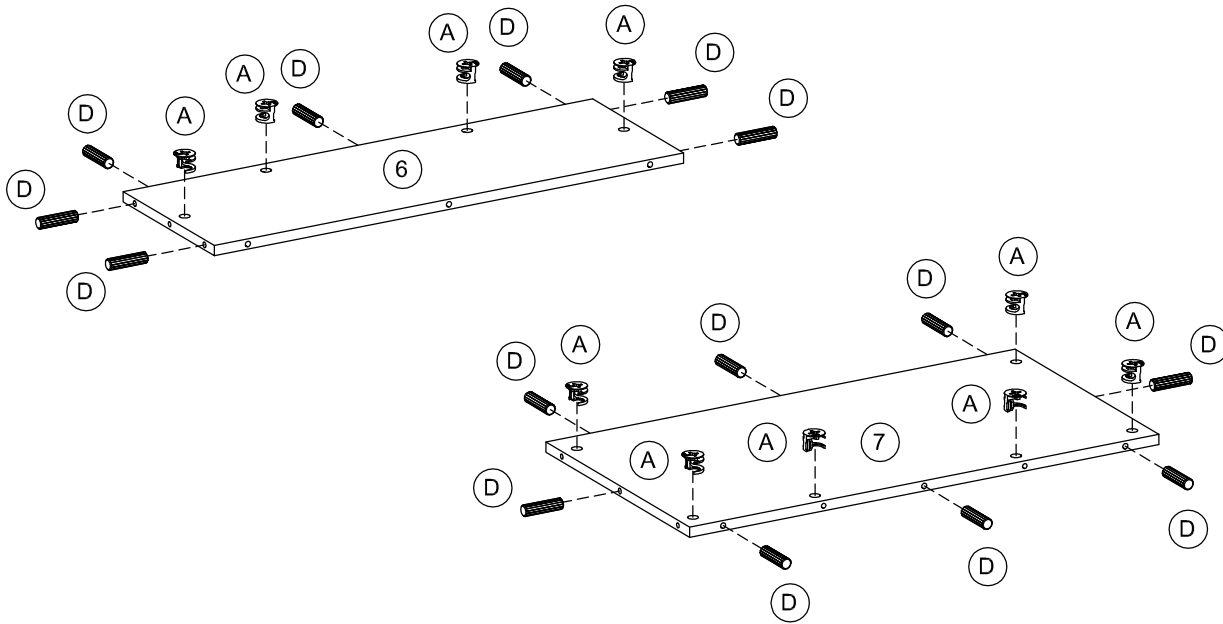
Insert cam-lock (A) and dowel (D) into drawer support (5) .
rotate 180° drawer support (5), then attach push latch (K) using screws (E).

Step 4:



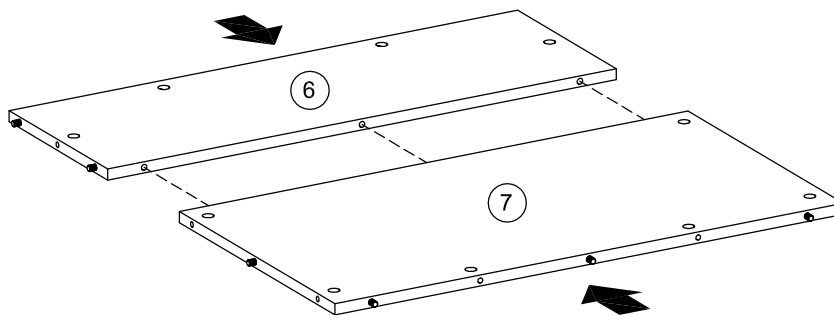
Attach cam-bolt (B) to front/rear bottom support (8) and middle bottom support (9) using screwdriver.
Insert cam-lock (A) and dowel (D) into front/rear bottom support (8) and middle bottom support (9).

Step 5:



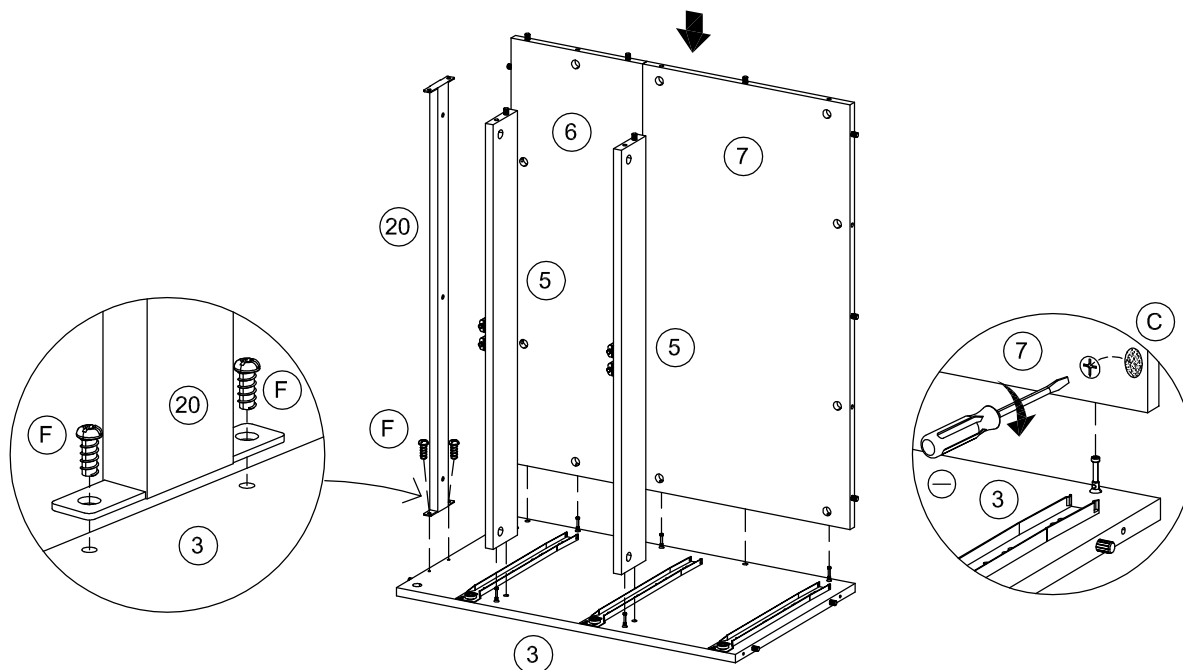
Insert cam-lock (A) and dowel (D) into top back panel (6) and bottom back panel (7).

Step 6:



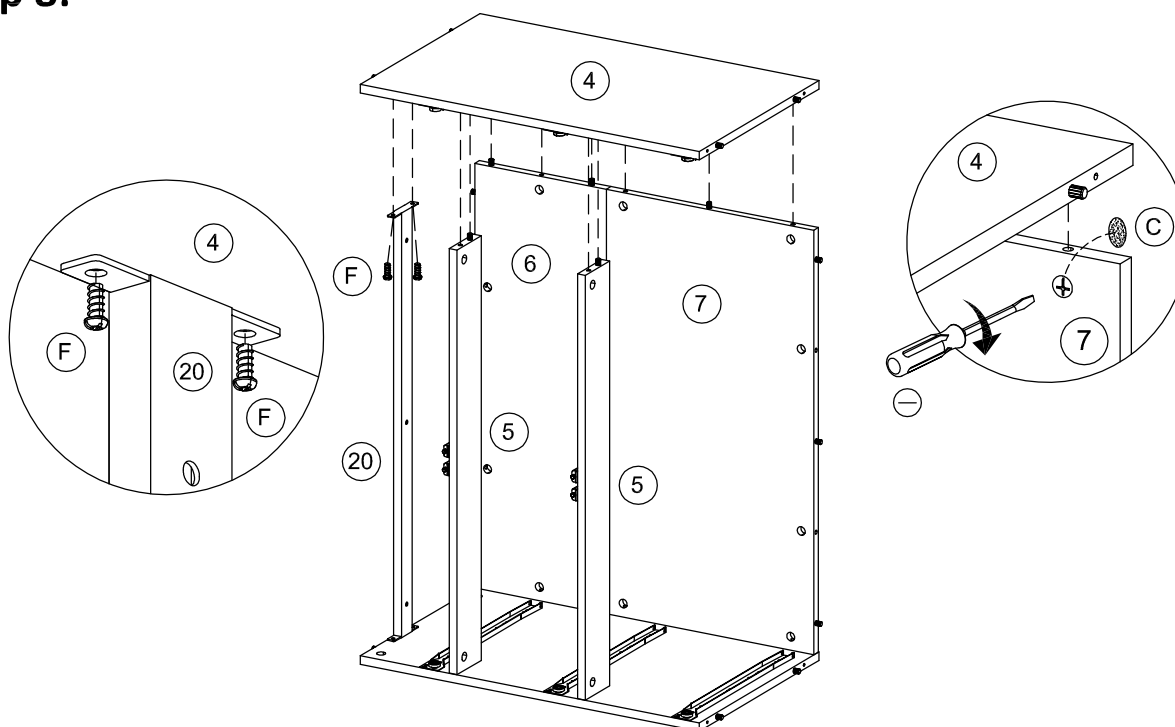
Attach top back panel (6) to bottom back panel (7) as shown.

Step 7:



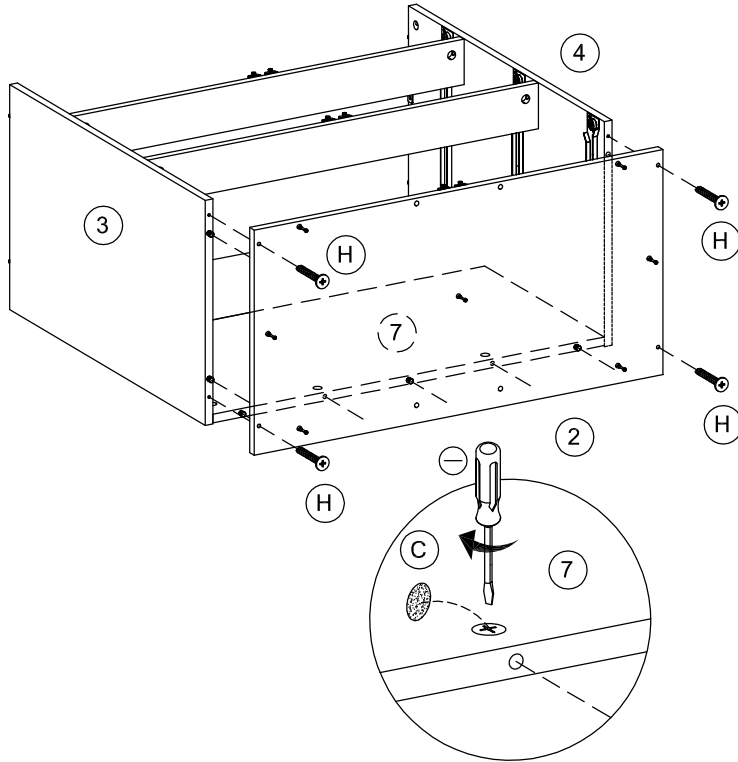
Attach metal support (20) to left side panel (3) using screws (F).
Attach drawer support (5), top back panel (6) and bottom back panel (7) to left side panel (3) as shown.
Turn the cam-lock (A) clockwise to lock using screwdriver, then paste cam-sticker (C).

Step 8:



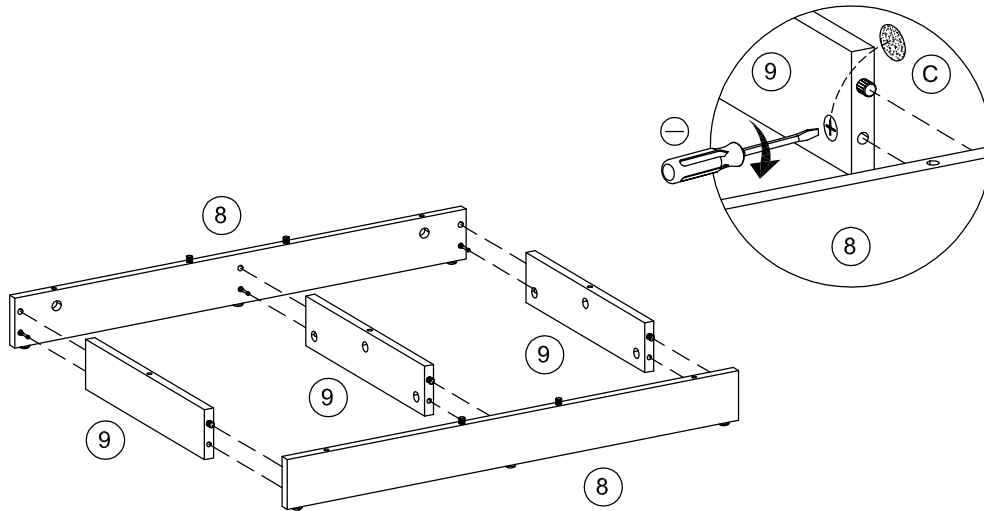
Attach right side panel (4) to case assembly as shown.
use screws (F) for tightening metal support (20) with right side panel (4).
Turn the cam-lock (A) clockwise to lock using screwdriver, then paste cam-sticker (C).

Step 9:



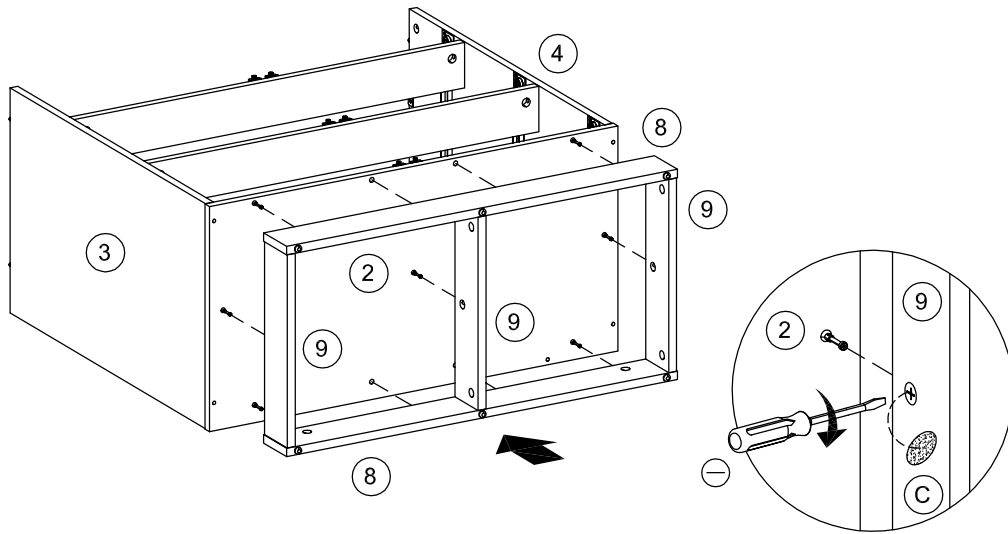
Attach base panel (2) to case assembly as shown.
use screws (H) for tightening base panel (2) with case assembly.
Turn the cam-lock (A) clockwise to lock using screwdriver, then paste cam-sticker (C).

Step 10:



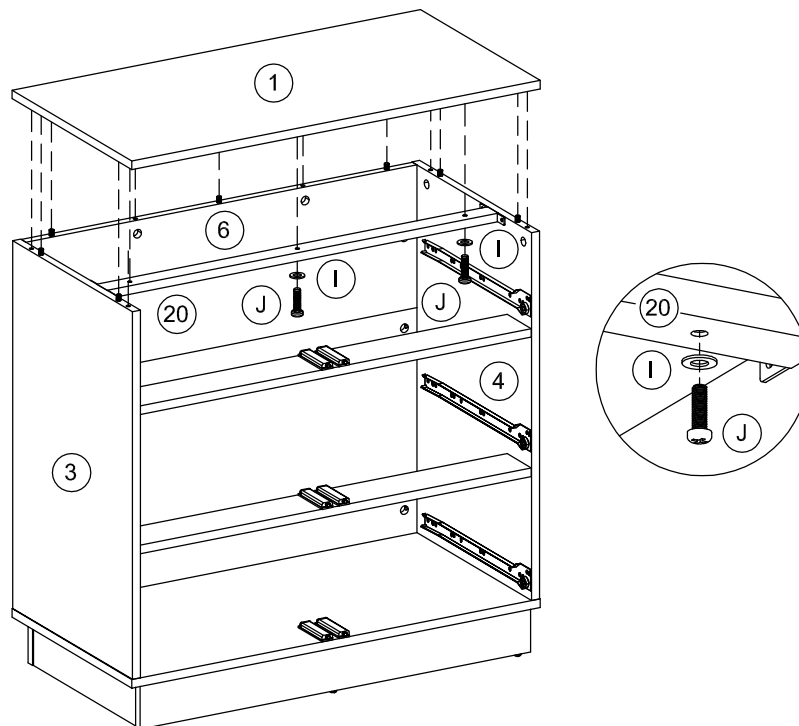
Attach front/rear bottom support (8) to middle bottom support (9) as shown.
Turn the cam-lock (A) clockwise to lock using screwdriver, then paste cam-sticker (C).

Step 11:



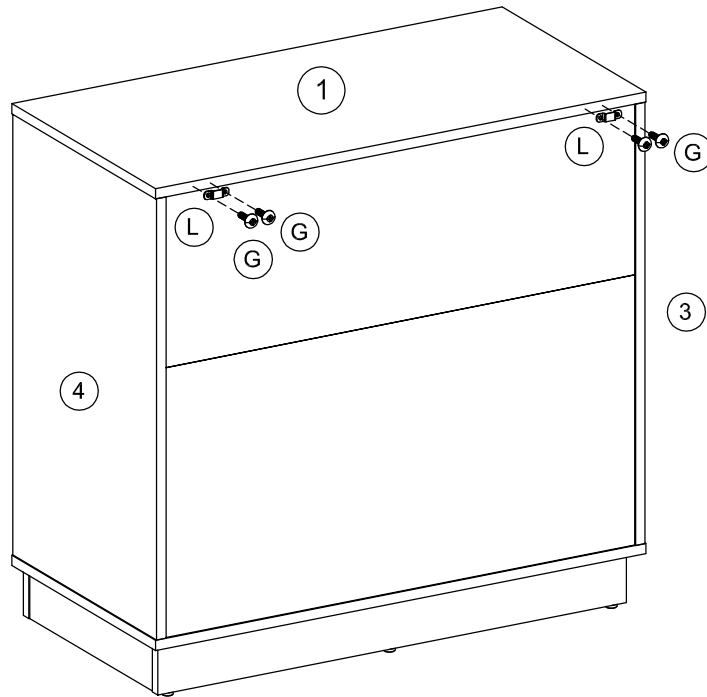
Attach assembly bottom support to case assembly as shown.
Turn the cam-lock (A) clockwise to lock using screwdriver, then paste cam-sticker (C).

Step 12:



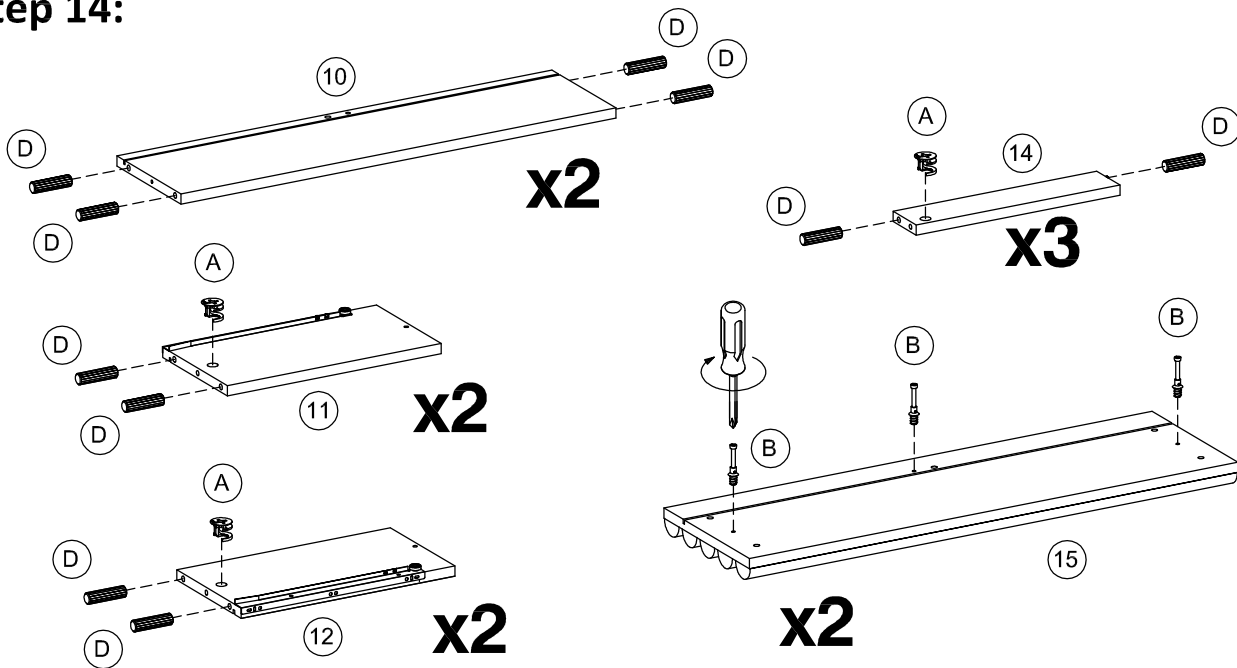
Attach top panel (1) to case assembly as shown.
use screws (J) and washer (I) for tightening metal plate (20) to top panel (1).
Turn the cam-lock (A) clockwise to lock using screwdriver, then paste cam-sticker (C).

Step 13:



Attach cable tie mounts (L) to case assembly using screws (G) as shown.

Step 14:

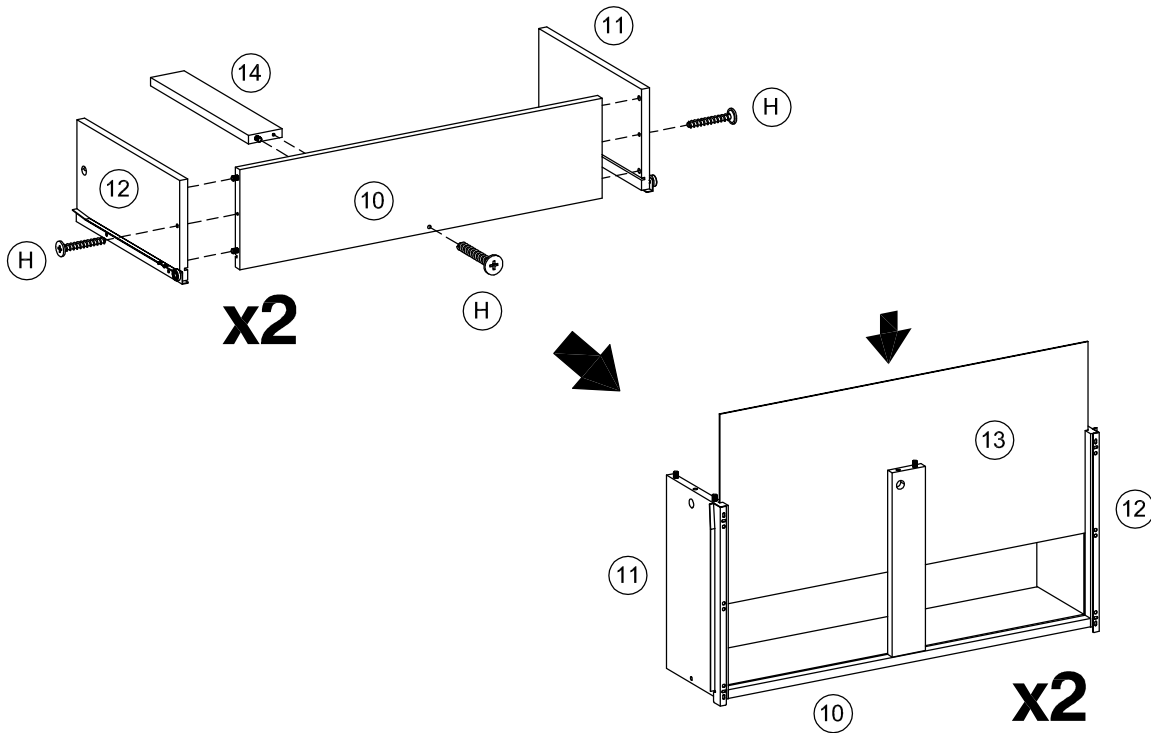


Attach cam-bolt (B) to bottom - front drawer (15) using screwdriver.

Insert cam-lock (A) into bottom - left drawer (11), bottom - right drawer (12) and bottom support drawer (14).

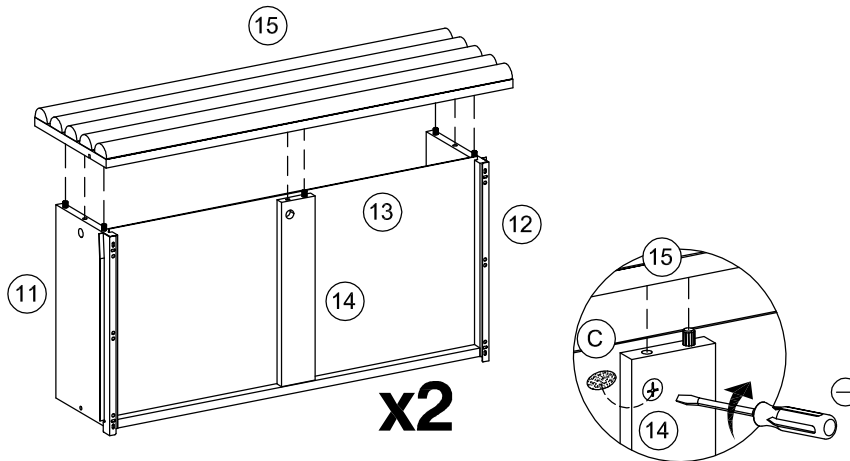
Insert dowel (D) into bottom - rear drawer (10), bottom - left drawer (11), bottom - right drawer (12) and bottom support drawer (14).

Step 15:



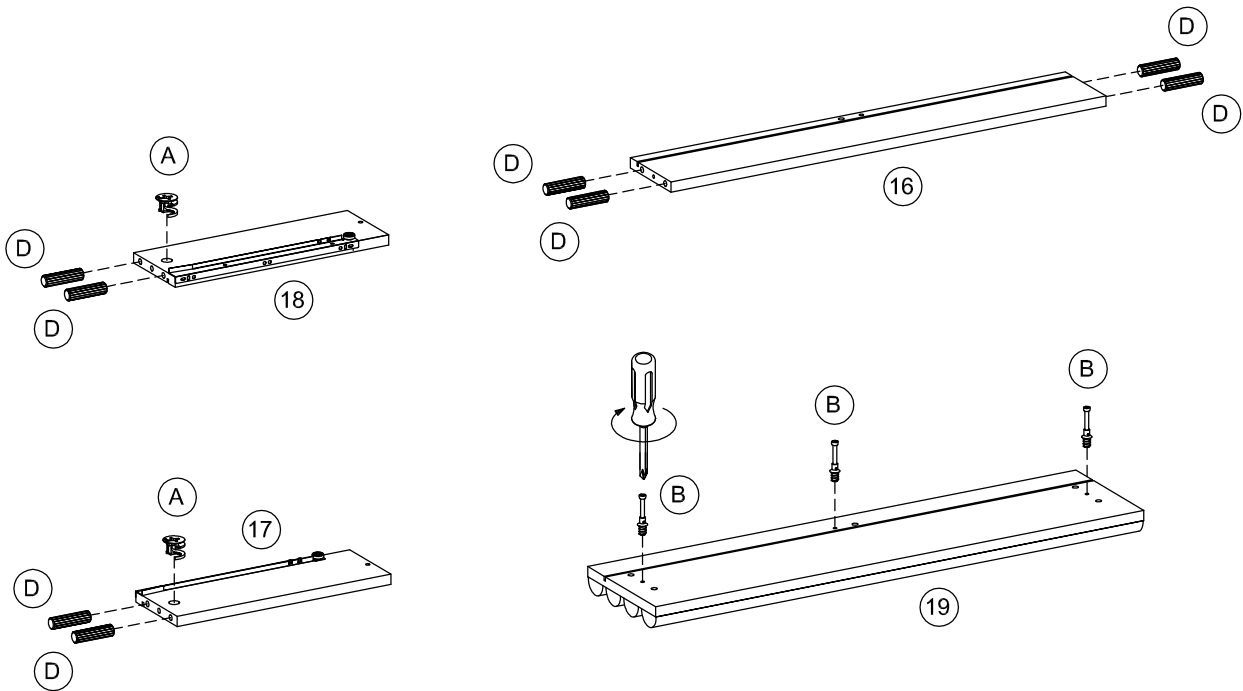
Attach bottom - left drawer (11), bottom - right drawer (12) and bottom support drawer (14) to bottom - rear drawer (10) using screws (H). Insert bottom drawer (13) into assembly drawer as shown.

Step 16:



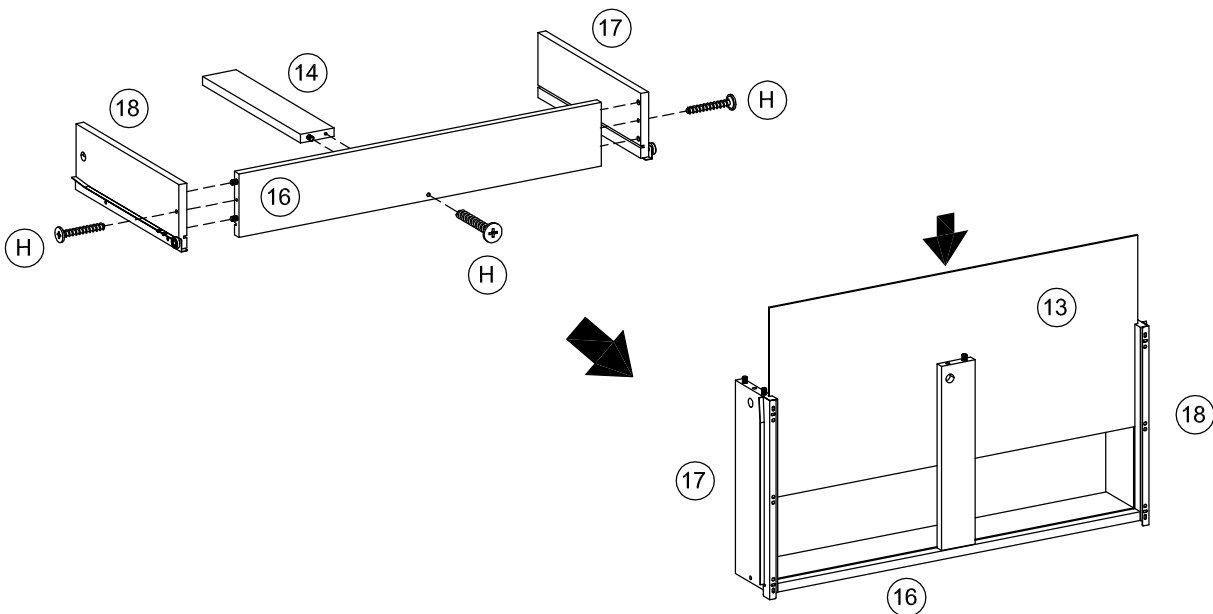
Attach bottom - front drawer (15) to assembly drawer as shown. Turn the cam-lock (A) clockwise to lock using screwdriver, then paste cam-sticker (C).

Step 17:



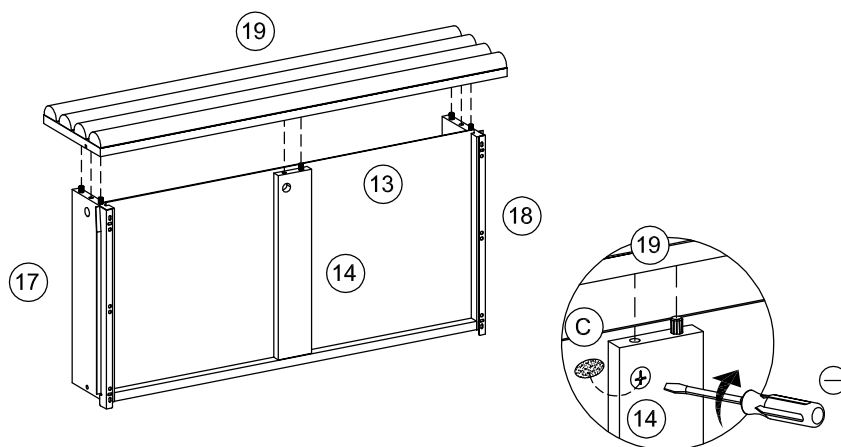
Attach cam-bolt (B) to top - front drawer (19) using screwdriver.
Insert cam-lock (A) into top - left drawer (17) and top - right drawer (18).
Insert dowel (D) into top - rear drawer (16), top - left drawer (17) and top - right drawer (18).

Step 18:



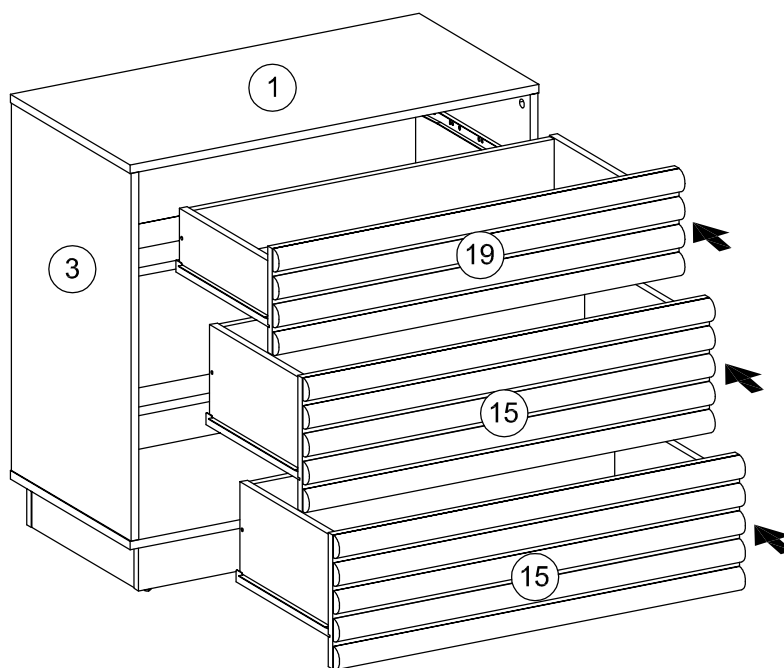
Attach top - left drawer (17), top - right drawer (18) and bottom support drawer (14) to top - rear drawer (16) using screws (H).
Insert bottom drawer (13) into assembly drawer as shown.

Step 19:



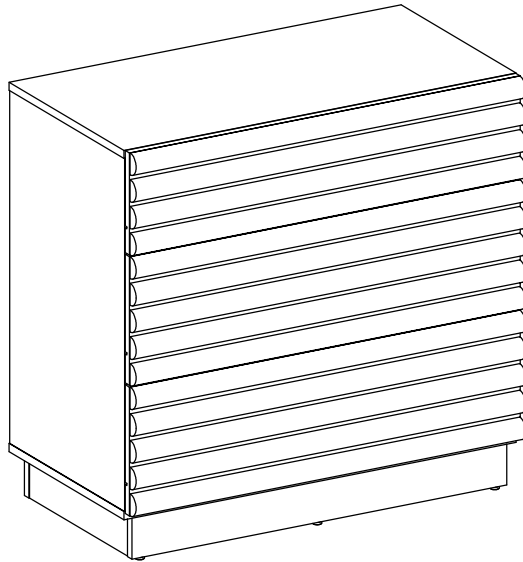
Attach top - front drawer (19) to assembly drawer as shown.
Turn the cam-lock (A) clockwise to lock using screwdriver, then paste cam-sticker (C).

Step 20:

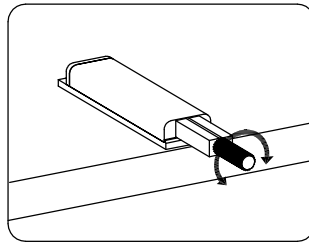


Insert assembly drawer into case assembly as shown.

Step 21:



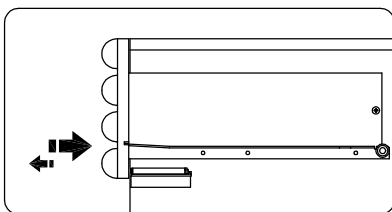
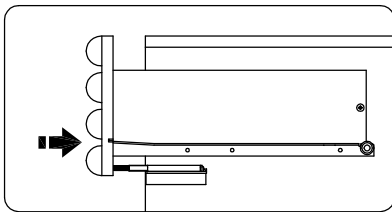
Assembly is complete.



To adjust the drawer gap to the cabinet body, please turn the pin on push latch system

CLOSE DRAWERS

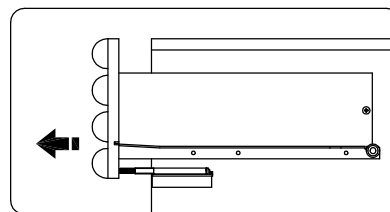
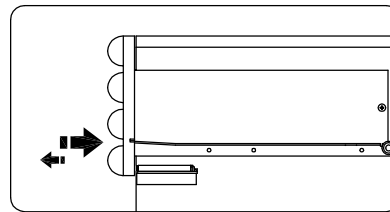
Push the drawers towards you



If the drawer feels like it has stopped releasing your hand pressure slowly

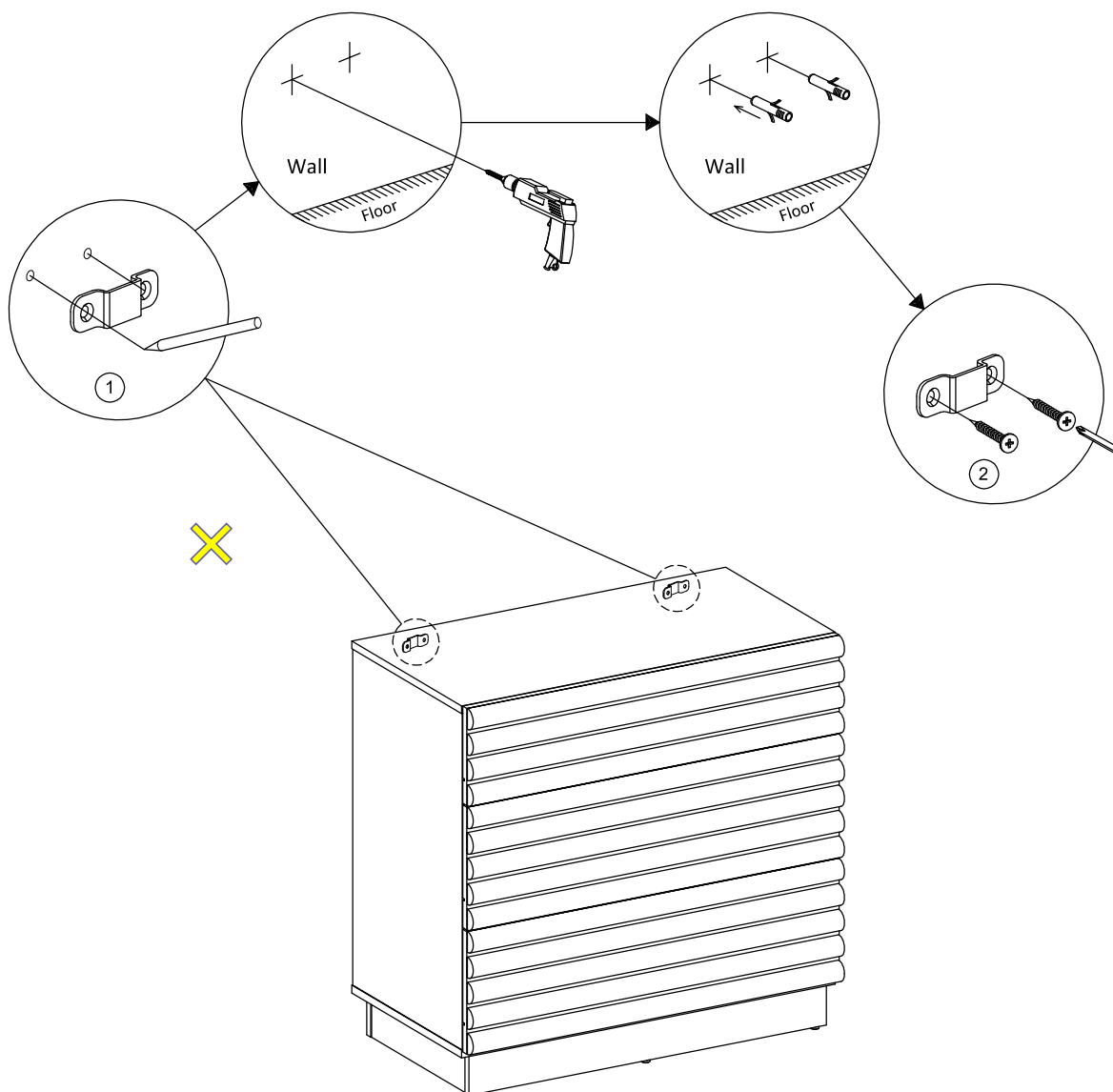
OPEN DRAWERS

Press gently in front of you then release your hand quickly



The drawer will open slightly to allow your finger to slide in to open

Step 22:



PLEASE FULLY READ THE WALL FIXINGS ADVICE ON THE PREVIOUS PAGE BEFORE PROCEEDING WITH STEP

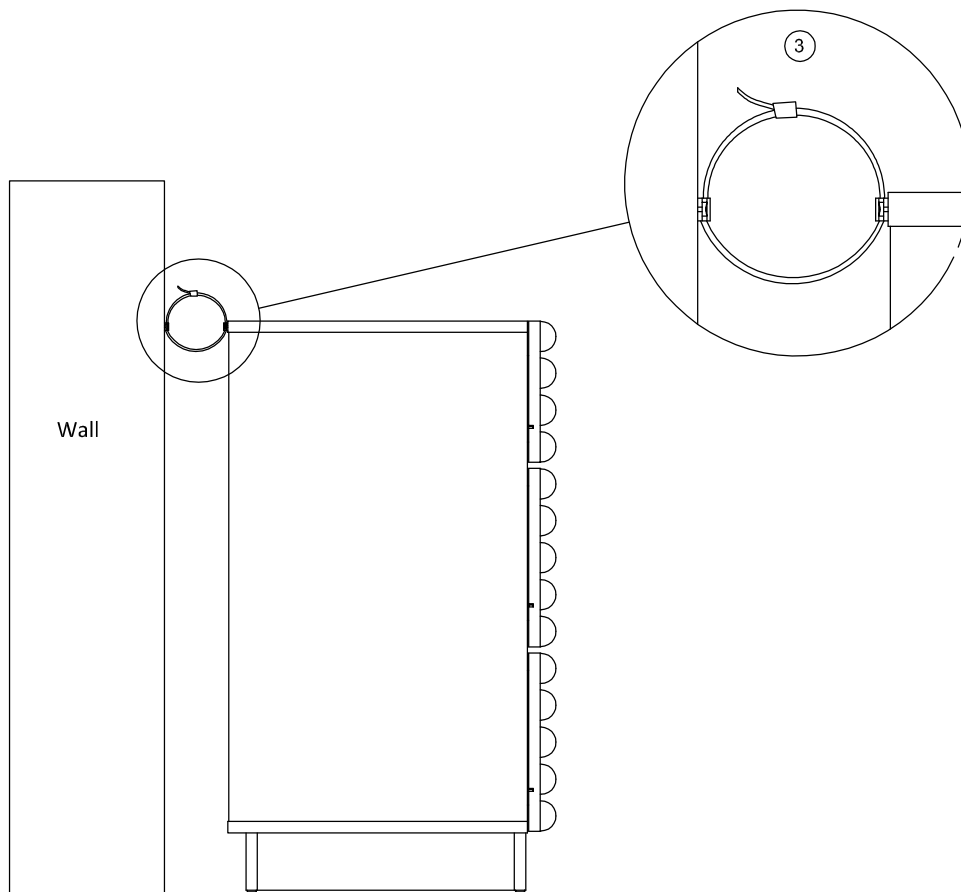
Move the cabinet into its location of intended use next to a wall.

Nest step is to attach x2 cable tie mounts (2) to the wall. Position a cable tie mount on the wall slightly below the mount already attached to the back of the cabinet (see image on step 23), and mark out the position of the fixing holes on the wall using a pencil. Repeat this process for the remaining cable tie mount.

Move the cabinet to one side and drill holes at the marked points using a drill bit type and size suited to the wall type and wall plug.

Fix the cable tie mounts to the wall using screws (not included) and wall plugs (not included) that are appropriate for your wall (see "wall Fixings" page for reference and advice).

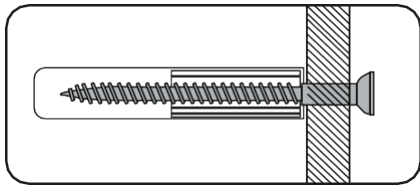
Step 23:



Reposition the cabinet back in place so that the cable tie mounts are aligned. Feed the cable ties (3) through both cable tie mounts. Then push the cabinet against the wall and pull the cable ties.

Wall Fixings

Step by step



Important

When drilling into walls always check there are no hidden wires or pipes etc. Make sure that the screws and wall plugs being used are suitable for supporting your unit. Consult a qualified tradesperson if you are unsure.

Hints

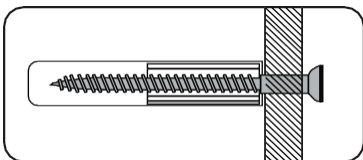
1. General Rule; Always use a larger screw and wall plug if you are not sure.
2. Ensure you use the recommended drill bit to match the wall plug and hole size.
3. Ensure you drill the hole horizontally, do not force the drill or enlarge the hole.
4. Take extra care when drilling high walls, ceilings and ceramic tiles. Ensure the plug is fitting below the ceramic tile to avoid splitting or cracking.
5. Ensure wall plugs are well fitted and are a tight fit in the drilled hole.

Types of Walls

You can use one of the following types of wall plug if your walls are made of brick, breeze block, concrete, stone, wood or plastic board.

1. STANDARD Wall Plug

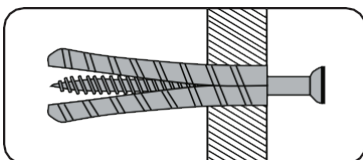
General wall materials



These come in various sizes and are made from plastic or sometimes wood fibre.

2. GENERAL PURPOSE Wall Plug

Aerated/Breeze block

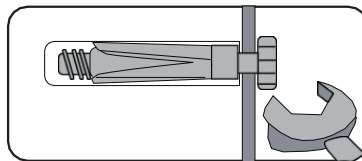


Generally aerated blocks should not be used to support heavy loads, use a specialist fitting in this case. For light loads, a General Purpose Plug can be used.

3. SHIELD ANCHOR

Wall Plug

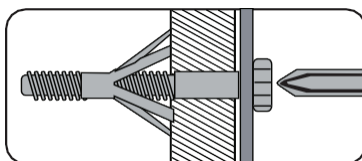
Heavy loads



For use with heavier loads such as TV & Hi-fi Speakers and Satellite Dishes etc.

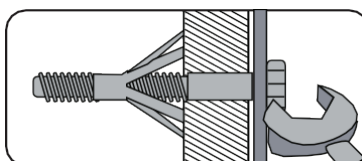
4. CAVITY FIXING

Wall Plug



For use with plaster board partitions or hollow wooden doors.

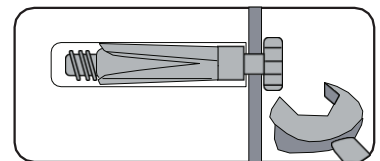
5. CAVITY FIXING HEAVY DUTY Wall Plug



For use with plaster board partitions or hollow wooden doors.

6. HAMMER FIXING

Wall Plug



For use with walls stuck with plaster board. The hammer fixing allows it to be fixed to the wall rather than the plaster board. Always check the fixing is secure to the retaining wall.

Care and Maintenance

! Safety

Always check the fitting and location to ensure your safety in and around the home.

! Fitting

From time to time check the fitting to ensure the wall plugs or screws do not become loose.

Wall Fixings

- This wall fixing is provided for your safety and we recommend that once in position the unit is secured to the wall for extra stability.
- Wall fixings may vary depending on item of furniture purchased.
- Wall fittings are not provided as different wall types require different wall plugs and screws.
- Please ensure that you use fittings that are suitable for your wall type (see previous page for a general guide).
- Please ensure that the head of the screws used has a diameter greater than the diameter of the hole on the wall fixing and that the fixing is safe and secure before using.
- When drilling into the walls, always ensure there are no hidden wires or pipes.
- If you are unsure, we recommend you consult a qualified Trades person.

Care and Maintenance of your furniture

- Please periodically check all fittings and re-tighten as necessary.
- To clean your item, please use a damp cloth and wipe clean.
- Please do not drag or pull your furniture.
- Please do not place hot items (e.g. hot drinks) directly on to the wood surfaces.
- Never allow any kind of liquid to remain on your furniture. Absorption can cause wood to warp or finishes to de-laminate.