


28mm Eyelet bay pole fixing instructions


- Please read carefully before commencing


We recommend a professional or a person competent in DIY undertake this installation.
We recommend two people undertake this installation.


Please note: Additional fasteners other than those sent with this eyelet bay pole may be required depending on the mounting surface. Wallboard and plaster require the use of anchors such as expansion or toggle bolts. Brick, tile or stone need special plugs and drill bits. Remember to always pre-drill holes in wood to avoid splitting.


Tools Required for hanging the eyelet bay pole

 Drill

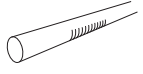

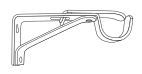




 6mm Drill Bit

 Screw Driver

 Hack Saw

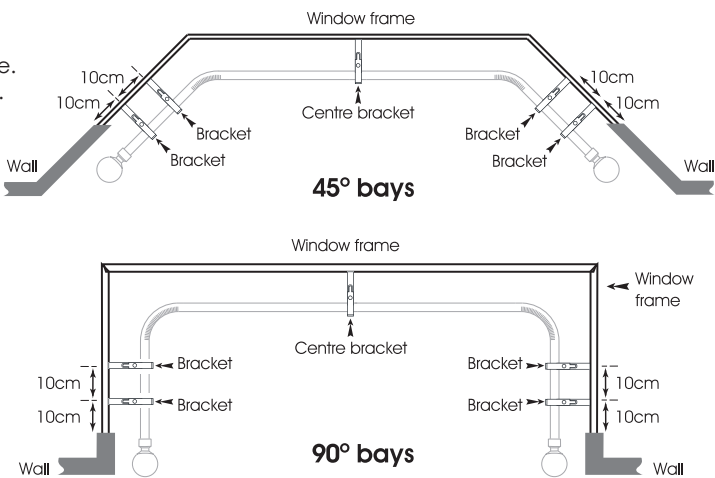
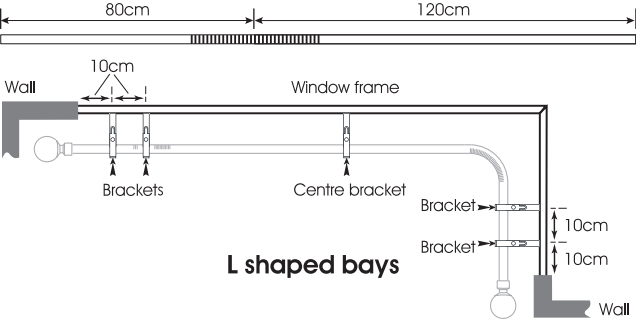
 Spirit level

Before bending this pole, read the 'Bending the bay pole' section carefully. All measurements are approximate.

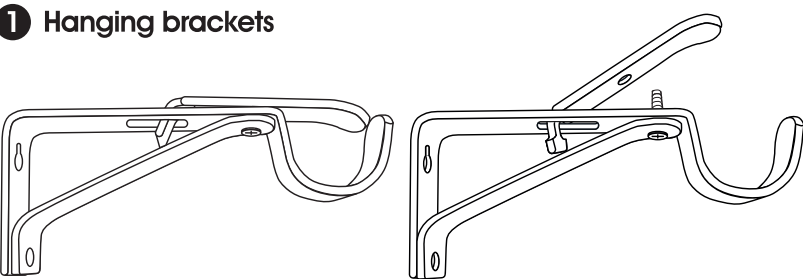
Parts list							
							
Pole length	Serrated bay pole	Finail	Hanging Bracket	Joining splice	Screws	Wall plugs	Allen key
400cm	2	2	5	1	15	15	1

BRACKET & POLE CUT POSITIONS

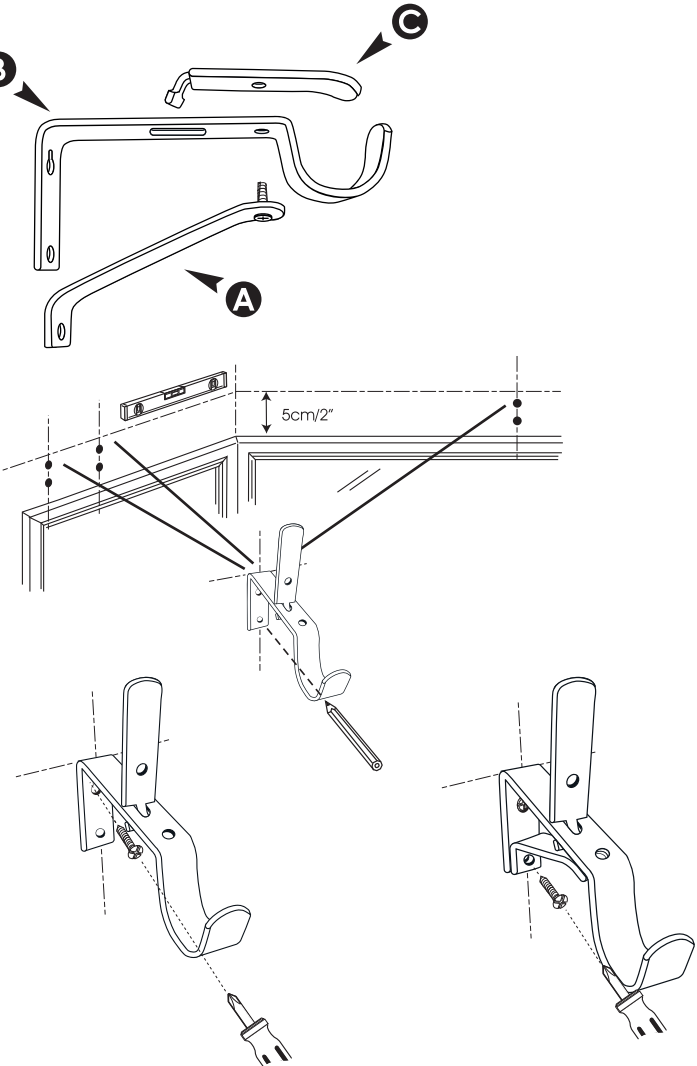
See the diagram that is the nearest match to your bay window style. Please note the distance from each pole end to centre of the cuts. Orientate your pole to suit your bay. All measurements are approximate. Final position is a guide only.



1 Hanging brackets



- Remove and keep safe all parts of the bracket, so that the bracket part 'A' can be moved.
- You may find that part 'C' also detaches, this is not a problem at this stage as it can be slotted back in later.
- With 'B' showing 2 mounting holes one at the top and one at the bottom, mark the wall with the bracket's position. Check they are level as you do so.
- Drill the holes and fix the **top** screw in part 'B'
- To fix the bottom hole of the bracket to the wall bring back part 'A' and fix the **bottom** screw in part 'B.'
- Remember to always use fittings suitable for your wall type (see note on the top of this page)



2 Bending the bay pole

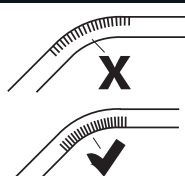
BEFORE YOU BEGIN TO BEND THE POLE HERE'S A PRACTICAL TIP-

Use your knee to ease the bending process to generate a smooth bend by gently spreading the pressure throughout the length of the bend.

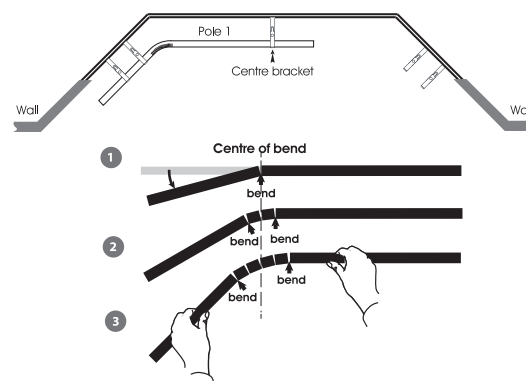
Be careful to avoid injury or damage to your clothes as the pole cuts close.

- Working from the centre position of the bend, bend the pole slightly in the arrow position shown in the diagram until you reach your required angle, checking the fit as you go along.

ENSURE THE CUTS ARE TO THE INSIDE OF THE BEND

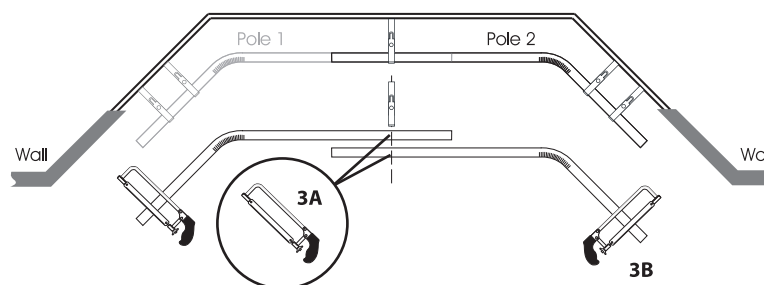


Bend the bay pole in the direction of the slots.



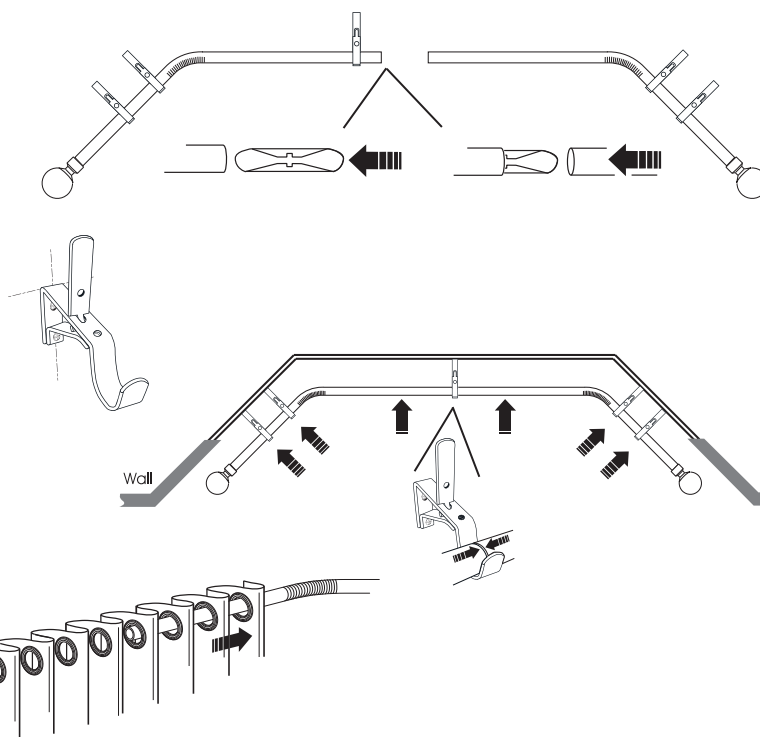
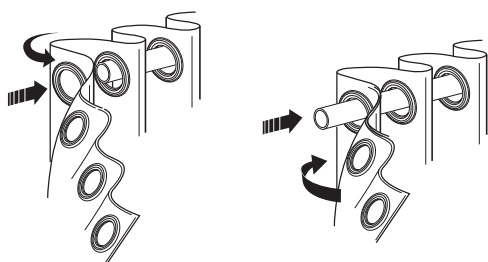
3 Trimming the bay pole to size

- Using the middle of the centre bracket as your measure. Mark and trim each pole to length.
- Leave a minimum of 10cm after the last bracket for the eyelet curtain and the mounting of the pole finial.

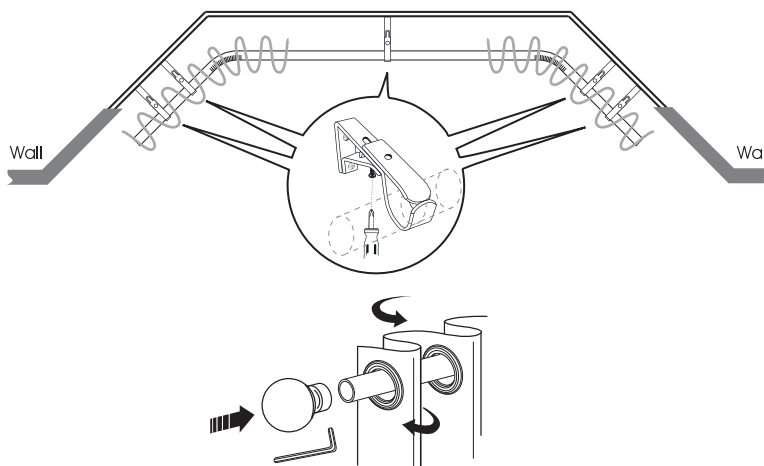


4 Hanging The Eyelet Curtain And Bay-pole

- Insert the joining splice half way in to the first pole, then add the next pole to complete the Join.
- Move the top part of the bracket 'C' up as shown or to the side.
- Place the pole onto the brackets, make sure the centre join of the poles are held within the centre bracket.
- Lift one side and slide the eyelet curtains on to the pole making a wave effect, then repeat on the other side. Making sure the ends of the curtains are returns.

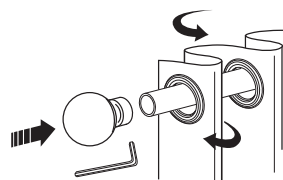


- We advise 3 eyelets at the beginning of the pole, then a bracket, then 2 eyelets in between the next bracket, then the rest of the curtain to the centre bracket.
- To secure the baypole and curtains in position move the top part of the bracket 'C' back and tighten with screw.



5 Fitting the finals.

- Slide on the final and secure with grub screw and allen key.



This pole can be used with curtain heading tape with the addition of 28mm lined curtain rings.